

# MORAVIAN COLLEGE CAREER AND CIVIC ENGAGEMENT ANNUAL REPORT 2017–2018



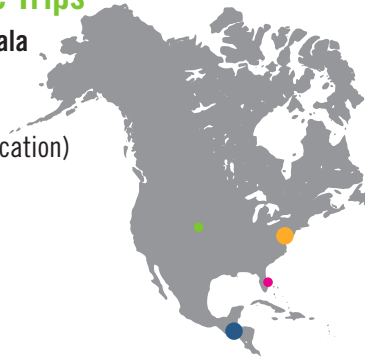
MORAVIAN  
COLLEGE

# Civic Engagement

We believe in giving back to the community that lifts you up. In the '17-'18 academic year, students completed **21,240** total service hours at more than **60** different locations locally, across the country, and around the globe.

## Spring Break Service Trips

San Lucas Tolimán, Guatemala  
Denver, CO  
Stuart, FL  
Bethlehem, PA (Service Staycation)



## 2nd Annual Heritage Day

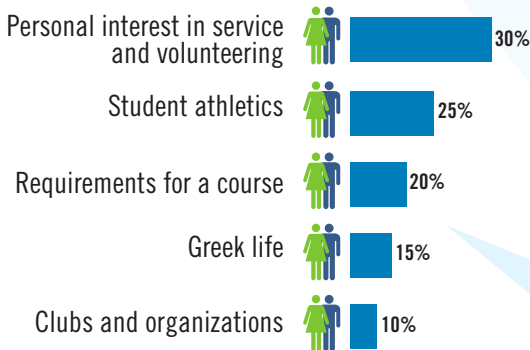


44 sites  
1,271 people  
2,542 hours



## Who Serves?

About **60%** of Moravian College students participated in some form of civic engagement last year.



## Diversity of Service Sites

Children and youth (14)  
Education (10)  
Animals (6)  
Food insecurity (6)  
Health (6)  
Environmental stewardship (5)  
Homelessness (5)  
Other (4)  
Affordable housing (3)  
Disaster preparedness (2)



## Hunger and Homelessness Awareness Month

200 students participated in 14 different events during this monthlong, campus-wide program.



## 1742 Experience

A preorientation service program that engages 21 freshmen in over 1,000 hours of service for one week in our local area.



## Civic Engagement Fellowships

Each fellow serves 200 hours at one partnership location during the academic year. They served more than 1,800 hours last year!

- » Bethlehem Area Public Library
- » Boys & Girls Club of Bethlehem
- » Equi-librium (2)
- » Lincoln Elementary School
- » New Bethany Ministries
- » Newman Civic Fellowship
- » William Penn Elementary School (2)

## America Reads Placements

72 students serve between 2 and 10 hours per week.

- » Bethlehem Area Public Library
- » Freemansburg Elementary School
- » Lincoln Elementary School
- » Marvine Elementary School
- » Northeast Middle School
- » William Penn Elementary School



# 94.13%

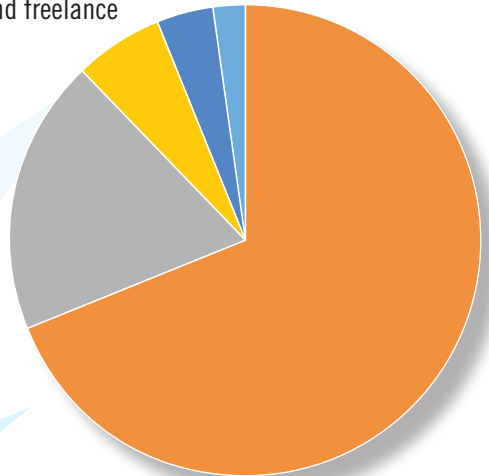
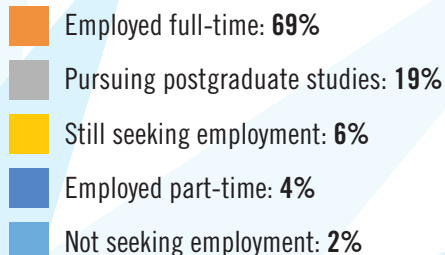
## Career Outcome Rate



Annual outreach activities have yielded information on **358** of **446** graduates of the class of 2018—**80.27%** of the class. Numbers and percentages below are based on those **358** graduates.

### Postgraduation Activity

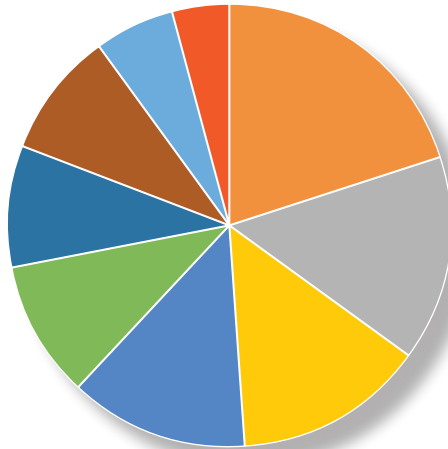
- » Employed full-time (**248**) \*Includes service, military, and freelance
- » Pursuing postgraduate studies (**69**)
- » Still seeking employment (**21**)
- » Employed part-time (**15**)
- » Not seeking employment (**5**)



## Postgraduate Study

The **69** graduates pursuing additional education are in the following fields of study:

- » Health professions (**14**)
- » Business (**10**)
- » Education (**10**)
- » Humanities and social sciences (**9**)
- » Engineering and mathematics (**7**)
- » Law school (**6**)
- » Natural sciences (**6**)
- » Other (**4**)
- » Medical school (**3**)



- Health professions: **20%**
- Education: **15%**
- Business: **14%**
- Humanities and social sciences: **13%**
- Engineering and mathematics: **10%**
- Law school: **9%**
- Natural sciences: **9%**
- Other: **6%**
- Medical school: **4%**

## Graduate Schools Attending

(partial listing)

American University  
 Berklee College of Music  
 Charleston School of Law  
 Clarkson University  
 The College of New Jersey  
 DeSales University  
 Drexel University  
 Duquesne University  
 Fuller Theological Seminary  
 Geisinger Commonwealth School of Medicine  
 The George Washington University

Kutztown University of Pennsylvania  
 Lehigh University  
 Moravian College  
 New Jersey Institute of Technology  
 The Pennsylvania State University  
 Rowan University  
 Saint Joseph's University San Francisco Conservatory of Music  
 Simmons University  
 Touro College of Osteopathic Medicine

The University of Arizona  
 University of Baltimore School of Law  
 University of Delaware  
 University of Maryland Francis King Carey School of Law  
 University of Pittsburgh  
 VCOM—The Edward Via College of Osteopathic Medicine  
 Villanova University  
 Washington University in St. Louis  
 Widener University School of Law

# Selected Employers (top 5 highlighted)

**St. Luke's University Health Network (34)**

**Lehigh Valley Health Network (15)**

**ADP, LLC (6)**

**AmeriCorps (4)**

**Baker Tilly Virchow Krause, LLP (3)**

**Penn Medicine (3)**

**The Guardian Life Insurance Company of America (3)**

Access Services

Allentown School District

Alloy5

Allstate Insurance Company

A.M. Best Company, Inc.

Anthropologie

Antietam School District

Ardent Mills

Atlantic Health System

B. Braun Medical Inc.

Bank of America Corporation

The Bank of New York Mellon Corporation

Bayhealth

Bethlehem Area School District

Bethlehem Police Department

Blue Mountain Resort

Bright Horizons Family Solutions

Bupa Arabia

The Catholic University of America

Cedar Fair Entertainment Company

The Children's Hospital of Philadelphia

Chipperfield Elementary School

CIIC

ConsumerTrack Inc.

Cooper University Health Care

Coordinated Health

Cranford Public School District

Deloitte

EASi

East Penn Manufacturing Company

East Stroudsburg University of Pennsylvania

Elwyn

Enterprise Holdings, Inc.

Equi-librium

EverythingBenefits

F.W. Webb Company

Faulkner Automotive Group

Fellowship Community

Geisinger Health

Geneia LLC

Greater Lehigh Valley Chamber of Commerce

Gulf International Bank B.S.C.

Health Network Laboratories

Hershey Entertainment and Resorts

HMI Technical Solutions, LLC

Holcomb Behavioral Health Systems

Holy Redeemer

HubShout, LLC

Immunomedics

Jersey Shore University Medical Center

JusticeWorks Family of Services

Kaleidoscope Family Solutions, Inc.

KidsPeace

Knight & Moskow, P.C.

L'Oréal USA

Leading Edge Innovations

Lehigh Valley Community Foundation

Lockheed Martin Corporation

Lutron Electronics Co., Inc

Mack Trucks

Marriott Vacations Worldwide Corporation

Matheson Tri-Gas, Inc.

The MCS Group, Inc.

Midvale United Methodist Church

Montgomery County Public Schools

Moravian College

Morgan Stanley

Mountain Lakes Country Day School

New Jersey Hills Media Group

New Jersey Jackals

New Jersey State Police

New Vitae Wellness and Recovery

New York Life Insurance Company

New York Red Bulls

New York Yankees

Nihon Kohden Corporation

Northampton County

Northeast Pennsylvania CIL

On Time Staffing

OneMain Financial

The Pathway School

Peaceable Kingdom

People First Federal Credit Union

Piramal Critical Care

Pohatcong Township School

Red Bull Distribution Company

Revlon

Saucon Valley School District

Saudi Arabian Oil Co.

SEI

SGS SA

SHI International Corp.

Skin Laser & Surgery Specialists of New York and New Jersey

SOS International LLC

Source Communications

St. Anne Catholic Church

Stages Academy, LLC

Star Pediatrics

SunteckTTS

Synergy Orthopedics

Thomas Jefferson University Hospitals

Tower Health

Town of Phillipsburg

Trend Micro Incorporated

UNC Health Care

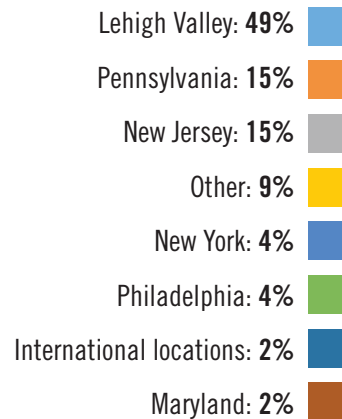
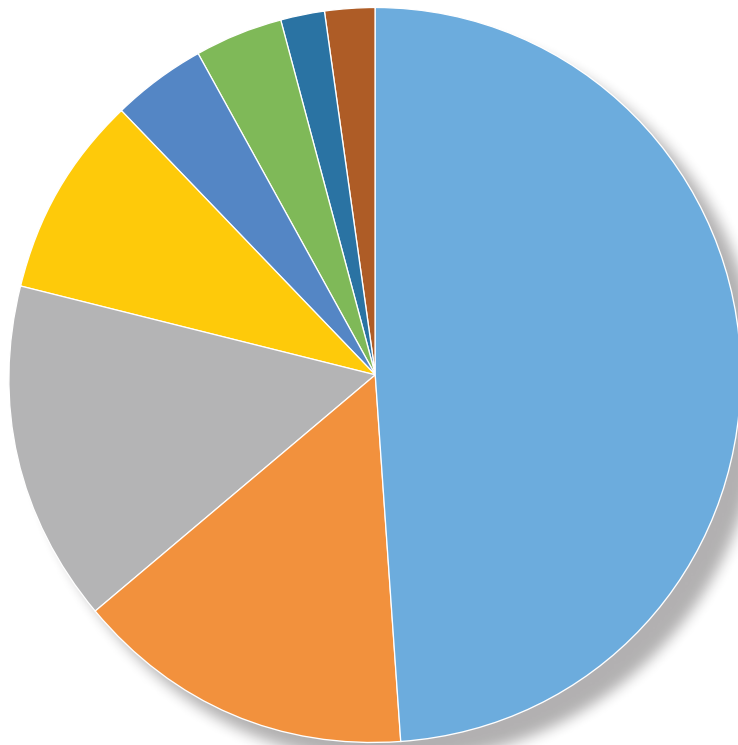
Victaulic

Wedgewood Communications, Inc.

# Breakdown by School/Department

	Working	Graduate School	Military Service	Volunteer/Service	Not Seeking	Still Seeking
<b>School of Arts, Humanities, and Social Sciences</b>						
Art	83.4%	0.0%	0.0%	8.3%	0.0%	8.3%
Economics and Business	78.3%	10.3%	2.1%	1.0%	3.1%	5.2%
English	78.6%	7.1%	0.0%	0.0%	0.0%	14.3%
History	100.0%	0.0%	0.0%	0.0%	0.0%	0.0%
Modern Languages and Literatures	100.0%	0.0%	0.0%	0.0%	0.0%	0.0%
Music	64.3%	21.4%	0.0%	0.0%	0.0%	14.3%
Philosophy	100.0%	0.0%	0.0%	0.0%	0.0%	0.0%
Political Science	0.0%	71.4%	0.0%	0.0%	28.6%	0.0%
Psychology	57.6%	39.4%	0.0%	0.0%	0.0%	3.0%
Religion	0.0%	100.0%	0.0%	0.0%	0.0%	0.0%
Sociology	83.3%	16.7%	0.0%	0.0%	0.0%	0.0%
<b>School of Natural and Health Sciences</b>						
Biochemistry	57.1%	28.6%	0.0%	0.0%	0.0%	14.3%
Biological Sciences	61.5%	30.8%	0.0%	0.0%	0.0%	7.7%
Chemistry	25.0%	50.0%	25.0%	0.0%	0.0%	0.0%
Environmental Studies and Sciences	42.9%	42.8%	0.0%	0.0%	0.0%	14.3%
Mathematics and Computer Science	80.0%	6.7%	0.0%	0.0%	0.0%	13.3%
Neuroscience	66.7%	33.3%	0.0%	0.0%	0.0%	0.0%
Nursing and Public Health	88.5%	5.1%	0.0%	1.3%	0.0%	5.1%
Physics and Earth Science	33.3%	66.7%	0.0%	0.0%	0.0%	0.0%
Rehabilitation Sciences	11.1%	77.8%	0.0%	0.0%	0.0%	11.1%
<b>Interdisciplinary</b>						
Interdisciplinary	100.0%	0.0%	0.0%	0.0%	0.0%	0.0%

# Geographic Distribution of Employment and Postgraduate Studies



**MORAVIAN  
COLLEGE**

1200 MAIN STREET • BETHLEHEM, PA 18018 • 610-861-1509  
MORAVIAN.EDU/CAREERCIVIC • CAREERCIVIC@MORAVIAN.EDU

Facebook: **Moravian College Center for Career and Civic Engagement**

Twitter: **@mccareercivic**

LinkedIn: **Moravian College Center for Career and Civic Engagement Houndlinks**

Instagram: **@mccareercivic**

