

## 2008-09 Schedule

### September

Sun. 14	at Muhlenberg College Tournament	9:00 a.m.
Sun. 28	<b>Moravian College Invitational</b>	<b>9:00 a.m.</b>

### October

Sat. 4	Intercollegiate Tennis Association Atlantic South Tournament hosted by the University of Mary Washington	9:00 a.m.
Sun. 5	Intercollegiate Tennis Association Atlantic South Tournament hosted by the University of Mary Washington	9:00 a.m.
Sat. 11	Landmark Conference Individual Tournament hosted by the University of Scranton	9:00 a.m.
Sun. 12	Landmark Conference Individual Tournament hosted by the University of Scranton	9:00 a.m.

### March

Sun.-Sun. 1-8	Spring Trip to Orlando, FL	
Sat. 14	<b>vs. Muhlenberg College</b>	<b>1:00 p.m.</b>
Sat. 21	<b>vs. The Catholic Univ. of America*</b>	<b>1:00 p.m.</b>
Wed. 25	at Neumann College	3:30 p.m.
Sat. 28	<b>vs. Susquehanna University*</b>	<b>1:00 p.m.</b>

### April

Sat. 4	<b>vs. U.S. Merchant Marine Academy*</b>	<b>1:00 p.m.</b>
Sun. 5	at Wilkes University	12:00 p.m.
Fri. 10	at Goucher College*	1:00 p.m.
Wed. 15	<b>vs. The University of Scranton*</b>	<b>3:30 p.m.</b>
Sat. 18	at Drew University*	1:00 p.m.
Mon. 20	at Lebanon Valley College	3:30 p.m.
Sat. 25	<b>vs. Juniata College*</b>	<b>12:00 p.m.</b>
Tues. 28	Landmark Conference Semifinals	TBA

### May

Sat. 2	Landmark Conference Championship	TBA
--------	----------------------------------	-----

\*Landmark Conference match      **Home matches in bold**

## 2007-08 Results (6-8-1)

at Muhlenberg College Fall Classic	Individuals only
at Goucher College Fall Invitational	Individuals only
ECAC South Open Tournament	T 8th of 10
vs. Aquinas (MI) College#	Lost 9-0
vs. Ferrum (VA) College#	Won 6-3
vs. Michigan Technological University#	Tied 3-3
at The Catholic University of America*	Lost 6-3
at DeSales University	Won 8-1
<b>vs. Susquehanna University*</b>	<b>Won 7-2</b>
at U.S. Merchant Marine Academy*	Won 9-0
at Muhlenberg College	Lost 5-4
<b>vs. Goucher College*</b>	<b>Won 6-3</b>
at The University of Scranton*	Lost 6-3
<b>vs. King's College</b>	<b>Lost 7-2</b>
<b>vs. Drew University*</b>	<b>Lost 5-4</b>
<b>vs. Lebanon Valley College</b>	<b>Lost 5-4</b>
at Juniata College*	Won 6-3
at Drew University in Landmark Conference Semifinals	Lost 8-1

\*Landmark Conference match

#match played in Florida

## Moravian College Quick Facts

<b>Location</b>	Bethlehem, PA 18018
<b>Founded</b>	1742
<b>Enrollment</b>	1,533
<b>Colors</b>	Navy Blue & Grey
<b>Nickname</b>	Greyhounds
<b>Affiliation</b>	NCAA Division III
<b>Conferences</b>	Landmark Conference, Eastern College Athletic Conference
<b>President</b>	Christopher M. Thomforde
<b>Director of Athletics</b>	Paul R. Moyer
<b>Sports Info. Director</b>	Mark Fleming
<b>Office Phone</b>	(610) 861-1472
<b>Home Phone</b>	(610) 758-8721
<b>Fax</b>	(610) 861-1581
<b>Hotline</b>	(610) 625-7865
<b>E-mail</b>	sportsInfo@moravian.edu
<b>Athletics Website</b>	www.moravian.edu/athletics
<b>Head Athletics Trainer</b>	Bob Ward, ATC
<b>Asst. Athletics Trainer</b>	Lorrie Radcliff, ATC
<b>Asst. Athletics Trainer</b>	Anita Fanelli, ATC

## Men's Tennis Quick Facts

<b>Home Court</b>	Hoffman Courts, resurfaced in 2008
<b>Co-Head Coach</b>	Neil Caniga (1st season)
<b>Cell Phone</b>	(908) 328-2976
<b>Co-Head Coach</b>	Jim Walker (28th season, 178-201-1)
<b>Office Phone</b>	(610) 861-1531
<b>Fax</b>	(610) 625-7954
<b>E-mail</b>	menstennis@moravian.edu

<b>2007-08 Record</b>	6-8-1
<b>2007-08 Conf. Record</b>	4-3, fourth place
<b>Postseason</b>	Landmark Conference Tournament Semifinalist

<b>Starters Back/Lost</b>	6/0
<b>Lettermen Back/Lost</b>	6/0

## 2008-09 Returnees

Jason Bonilla	Jr. Whitestone, NY/Bayside
Ian Box	Jr. Charlestown, MA/The Rivers School
Keith Feinman	Sr. Haddonfield, NJ/Haddonfield
Chandler Forman	Jr. Plymouth, MA/Plymouth
Matthew Share	So. Langhorne, PA/Neshaminy
Thomas Turcich	So. Haddon Township, NJ/Haddon Twp.

## About Moravian College

Moravian College is a private, selective liberal arts institution located in the heart of the Lehigh Valley, in Bethlehem, Pennsylvania. Founded in 1742, it is recognized as the sixth-oldest college in the country. Enrollment is approximately 1,500 undergraduates each year, which maintains a favorable faculty to student ratio, small class size, and emphasis on personalized teaching.

Moravian College believes its mission is to integrate a liberal arts education with preparation for life, enriching students in and out of the classroom. Moravian aims to give its students a foundation for careers or graduate/professional school, for continued lifelong learning, and for a values-oriented approach to society.

With over 50 different programs of study and more than 70 clubs and organizations, Moravian offers flexibility and diversity among all academic and extracurricular areas. The College grants the Bachelor of Art, Bachelor of Music, and Bachelor of Science degrees.

On the athletic fields, Moravian's 20 men's and women's varsity teams have a winning tradition. During the 2007-08 school year, Moravian teams won six Landmark Conference championships, with 11 teams reaching post-season play including NCAA Championship berths for the women's soccer and men's basketball teams and ECAC Championships for the women's indoor and outdoor track & field squads and the men's outdoor track & field team. In addition, nine student-athletes earned All-America status including one *ESPN The Magazine* Academic All-American and two national champions in track & field.

A Division III institution, Moravian has excellent athletics facilities, including the venerable Johnston Hall, Breidegam Fieldhouse, and the Steel Field athletics complex, including Sportex Turf on Rocco Calvo Field and an eight-lane, Olympic-quality Mondo track, both installed in 2005.

The College has a strong sense of identity and purpose firmly rooted in a long and rich tradition. Both in and out of the classroom, Moravian and its students maintain that tradition.

For more information on enrolling at Moravian, contact:

Moravian College  
Office of Admissions  
1200 Main Street  
Bethlehem, PA 18018  
Tel: (610) 861-1320 or 800-441-3191  
Fax: (610) 625-7930  
Email: admissions@moravian.edu  
www.moravian.edu



# 2008-09 GREYHOUND MEN'S TENNIS



Moravian College  
Bethlehem, Pennsylvania

## Co-Head Coach Jim Walker

**Jim Walker** has served as head basketball and tennis coach since 1979. **Walker** has also been interim athletics director twice. He held the athletics director position from the summer of 1996 to May 1998 and resumed the title in July of 1999 until July of 2000.

On the tennis courts, his career includes the 1996 MAC Commonwealth League championship. **Walker** has led the Greyhounds to the MAC Playoffs in 2001 & 2002, the Commonwealth Conference Tournament in 2007 and the inaugural Landmark Conference Tournament in 2008. **Walker** is the winningest coach in school history with a record of 178-201-1 entering his 28th season.

He was a ranked player in the Middle States Tennis Association, and is a teaching member of the Professional Tennis Registry.

On the basketball floor, **Walker** is the winningest basketball coach in Moravian history and has compiled a 372-332 record, earning his 300th career victory in January of 2002. **Walker** has guided the 'Hounds to two NCAA tournament appearances including one last season and nine conference playoff berths, including 1996's MAC Commonwealth League crown.

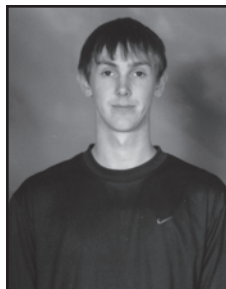
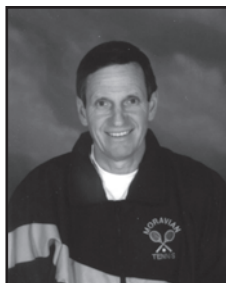
**Walker**, who has a career basketball coaching mark of 387-342 over 29 years, earned a B.A. in history from Gettysburg College, where he played varsity basketball and tennis, and earned a master's degree in education from Rider College.

## Co-Head Coach Neil Caniga

**Neil Caniga** is in his first year as co-head coach of the Moravian College men's tennis program after serving as associate head coach last year.

**Caniga** played four seasons for the Greyhounds with a career record of 45-25, currently third in school history in singles victories, and he was named to the Commonwealth All-Conference Team in each of his four years. **Caniga** is second all-time with a 35-30 mark in doubles action and tied the single season mark with 13 doubles wins with current Greyhound **Ian Box** in 2007.

**Caniga** graduated from Moravian in 2007 with a B.A. in mathematics and a minor in accounting. He is currently working towards his masters degree at the US Sports Academy



## 2007-08 Season Review

### Statistics

#### Singles

Name	Overall	Dual	Landmark
Jason Bonilla	4-15	4-9	2-3
Ian Box	13-1	13-1	7-0
Keith Feinman	6-15	4-10	2-5
Chandler Forman	10-11	8-7	3-4
Timothy Gillen	6-1	0-0	0-0
Justin Holguin	0-2	0-0	0-0
Matthew Share	5-10	5-10	3-4
Thomas Turcich	12-6	10-4	7-0
Totals	56-63	44-43	24-18

#### Doubles

Name	Overall	Dual	Landmark
Bonilla/Forman	0-2	0-0	0-0
Feinman/Gillen	0-2	0-0	0-0
Gustin/Turcich	2-1	0-0	0-0
Bonilla/Feinman	0-2	0-0	0-0
Forman/Turcich	10-8	8-7	4-3
Box/Feinman	7-8	7-8	4-3
Bonilla/Share	4-9	4-9	3-2
Totals	23-34	19-26	11-10

### Awards

#### Ian Box

Landmark Conference Player of the Year  
 Landmark All-Conference First Team Singles  
 Landmark All-Conference Second Team Doubles  
 Landmark Conference Spring Academic Honor Roll  
 Landmark Conference Spring All-Academic Team

#### Keith Feinman

Landmark All-Conference Second Team Doubles  
 Landmark Conference Spring Academic Honor Roll



## 2008-09 Season Preview

The 2008-09 Moravian College men's tennis team and head coach **Jim Walker** are excited about the upcoming year as the Greyhounds compete in the second year of the Landmark Conference. Moravian hopes to challenge for the conference title in the spring and returns all six of its starters from last year's squad.

Moravian posted an overall record of 6-8-1 and finished 4-3 in the Landmark Conference in 2007-08 as the Greyhounds made their second consecutive postseason appearance falling to Drew University in the semifinals.

Leading the Greyhounds was junior **Ian Box (Charlestown, MA/The Rivers School)**, who recorded a 13-1 record at first singles including a 7-0 record in conference matches. **Box** was named the 2008 Landmark Conference Player of the Year and to the Landmark All-Conference First Team in singles.

**Box** teamed up with senior **Keith Feinman (Haddonfield, NJ/Haddonfield HS)** in doubles last year for an overall record of 7-8 and a conference record of 4-3 while earning spots on the Landmark All-Conference Second Team in doubles. **Feinman** also contributed an overall singles record of 6-15 and a conference record of 2-5.

Sophomore **Thomas Turcich (Haddon Township, NJ/Haddon Township HS)** completed a 12-6 overall singles record and also had a 7-0 record in Landmark Conference action. Junior **Chandler Forman (Plymouth, MA/Plymouth HS)** put up a 10-11 overall singles record last year while recording a 10-8 doubles record with **Turcich** as well.

Sophomore **Matthew Share (Langhorne, PA/Neshaminy HS)** had a 5-10 singles record on the season while sophomore **Jason Bonilla (Whitestone, NY/Bayside HS)** recorded a 4-15 slate in singles action. **Share** and **Bonilla** teamed up for doubles and completed a record of 4-9.

Coach **Walker** is going into his 28th season as the men's tennis coach and looks to be a strong competitor in the Landmark Conference. To prepare his squad, coach **Walker** has four fall tournaments scheduled and a trip to Florida during Spring Break in March before the Greyhounds begin their 2009 spring season.

Action photographs by Bill Johnson.

Head shots by Ray Bishop Photography.

Research & editing assistance by Nick Pepi '10.

Brochure printed by Gillespie Printing, Catasauqua, PA.

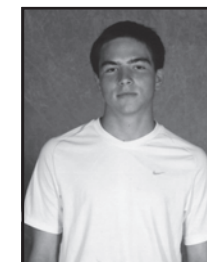
## Top Returning Players



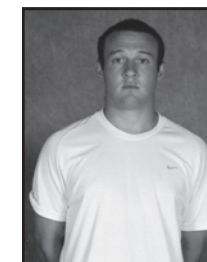
Jason Bonilla  
 Junior  
 Whitestone, NY



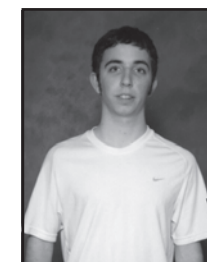
Ian Box  
 Junior  
 Charlestown, MA



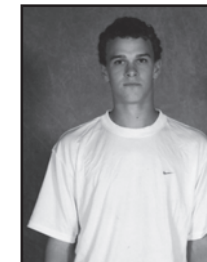
Keith Feinman  
 Senior  
 Haddonfield, NJ



Chandler Forman  
 Junior  
 Plymouth, MA



Matthew Share  
 Sophomore  
 Langhorne, PA



Thomas Turcich  
 Sophomore  
 Haddon Township, NJ

## 2008 Landmark Conference Standings

	Conference				Overall			
	GP	Record	%	GF GA	GP	Record	%	GF GA
Drew*	7	7-0	1.000	54 9	17	12-5	0.706	100 53
Catholic*	7	6-1	0.857	43 20	17	11-6	0.647	87 65
Scranton*	7	5-2	0.714	41 22	19	11-7-1	0.605	107 63
Moravian*	7	4-3	0.571	38 25	15	6-8-1	0.433	66 66
Juniata	7	3-4	0.429	29 34	18	6-12	0.333	61 101
Susquehanna	7	2-5	0.286	19 44	12	3-9	0.250	38 79
Goucher	7	1-6	0.143	19 44	18	4-14	0.222	43 119
Merchant Marine	7	0-7	0.000	9 54	14	1-13	0.071	26 100

\*Qualified for postseason tournament