

2010-11 Schedule

September

Sat.-Sun. 11-12 at University of Scranton Invitational TBA
Sun. 19 at Muhlenberg College Tournament TBA

October

Tues. 5 at Marywood University 4:00 p.m.

March

Sat.-Sun. 5-13 Spring Trip to Orlando, Florida (matches TBA)
Sat. 19 vs. Juniata College* 12:00 p.m.
Sat. 26 vs. The Catholic University of America* 1:00 p.m.
Thurs. 31 at LaSalle University TBA

April

Sat. 2 at Susquehanna University* 1:00 p.m.
Wed. 6 at Wilkes University TBA
Sat. 9 vs. U.S. Merchant Marine Academy* 1:00 p.m.
Tues. 12 vs. The University of Scranton* 3:30 p.m.
Thurs. 14 at Neumann University TBA
Sat. 16 at Goucher College* 1:00 p.m.
Sat. 23 at Drew University* 12:00 p.m.
Tues. 26 Landmark Conference Semifinals (if qualify)
Sat. 30 Landmark Conference Championship (if qualify)

*Landmark Conference match

Home matches in bold

2009-10 Results (7-8)

at Muhlenberg College Tournament Individuals Only
at ITA Southeast Tournament hosted by the University
of Mary Washington, Fredericksburg, VA Individuals Only
at Lehigh University Team Challenge Individuals Only
vs. Olivet Nazarene University# Lost 9-0
vs. Sacred Heart University# Lost 9-0
at The Catholic University of America* Won 7-2
at Juniata College* Won 8-1
vs. Stevens Institute of Technology Lost 9-0
vs. Wilkes University Lost 7-2
vs. Susquehanna University* Won 9-0
vs. LaSalle University Lost 7-2
vs. Neumann University Won 7-2
at U.S. Merchant Marine Academy* Won 9-0
at Muhlenberg College Won 5-4
at The University of Scranton* Lost 7-2
vs. Goucher College* Won 9-0
vs. Drew University* Lost 6-3
at The University of Scranton in Landmark Conference
Semifinals Lost 8-0

*Landmark Conference match

#match played in Florida

Moravian College Quick Facts

Location Bethlehem, PA 18018
Founded 1742
Enrollment 1,564
Colors Navy Blue & Grey
Nickname Greyhounds
Affiliation NCAA Division III
Conferences Landmark Conference,
Eastern College Athletic Conference
President Christopher M. Thomforde
Director of Athletics Paul R. Moyer
Sports Info. Director Mark Fleming
Office Phone (610) 861-1472
Home Phone (610) 758-8721
Fax (610) 861-1581
Hotline (610) 625-7865
E-mail sportsInfo@moravian.edu
www.moravian.edu/athletics
Athletics Website
Head Athletic Trainer Bob Ward, ATC
Asst. Athletic Trainer Lorrie Radcliff, ATC
Asst. Athletic Trainer Frank Jackson, ATC

Men's Tennis Quick Facts

Home Court Hoffman Courts, resurfaced
in 2008
Head Coach Bill Maxwell (2nd year, 7-8)
Office Phone (610) 625-7783
Fax (610) 625-7954
E-mail menstennis@moravian.edu
2009-10 Record 7-8
2009-10 Conf. Record 5-2, third place
Postseason Landmark Conference
Semifinalist
Starters Back/Lost 6/2
Lettermen Back/Lost 6/3

2010-11 Returnees

Stefan Apostolos Jr. Hillsborough, NJ/Hillsborough
Kevin Holze Jr. Bayside, NY/St. Francis Prep
Doug Morrow Sr. Coopersburg, PA/Southern Lehigh
Drew Shreter Jr. Moorestown, NJ/Moorestown
Thomas Turcich Sr. Haddon Township, NJ/Haddon Twp.
Nick Yelito Jr. Tamaqua, PA/Tamaqua

Action photographs by Specialty Photographic, Inc.
Head shots by Ray Bishop Photography.
Brochure printed by Gillespie Printing, Catasauqua, PA.

About Moravian College

Moravian College is a private, selective, liberal arts institution located in the heart of the Lehigh Valley in Bethlehem, Pennsylvania. Founded in 1742, it is recognized as the sixth-oldest college in the country. Enrollment is approximately 1,500 undergraduates each year, which maintains a favorable faculty to student ratio, small class size, and emphasis on personalized teaching.

Moravian believes its mission is to integrate a liberal arts education with preparation for life, enriching students in and out of the classroom. Moravian aims to give its students a foundation for careers or graduate/professional school, for continued lifelong learning, and for a values-oriented approach to society.

With over 50 different programs of study and more than 70 clubs and organizations, Moravian offers flexibility and diversity among all academic and extracurricular areas. The College grants the Bachelor of Art, Bachelor of Music, and Bachelor of Science degrees.

On the athletic fields, Moravian's 18 men's and women's varsity teams have a winning tradition. During the 2009-10 school year, Moravian teams won seven Landmark Conference championships with ten teams reaching post-season play including NCAA Championship berths for the baseball, women's basketball and softball teams. In addition, 13 student-athletes earned All-America status with three national champions in track & field.

Approximately one-quarter of Moravian's student body participates in intercollegiate athletics every year, and many more compete in club sports and intramurals. Moravian's student-athletes excel academically. The College has had 33 Academic All-Americans, while more than 70 student-athletes earn spots on the conference All-Academic Honor Rolls yearly.

A Division III institution, Moravian has excellent athletics facilities, including the venerable Johnston Hall, Breidegam Fieldhouse, and the Moravian College Steel Athletics complex, including Sportex Turf on Rocco Calvo Field and an eight-lane, Olympic-quality Mondo track, both installed in 2005.

The College has a strong sense of identity and purpose firmly rooted in a long and rich tradition. Both in and out of the classroom, Moravian and its students maintain that tradition.

For more information on enrolling at Moravian, contact:

Moravian College
Office of Admissions
1200 Main Street
Bethlehem, PA 18018
Tel: (610) 861-1320 or 800-441-3191
Fax: (610) 625-7930
Email: admissions@moravian.edu
www.moravian.edu



2010-11 Greyhound Men's Tennis



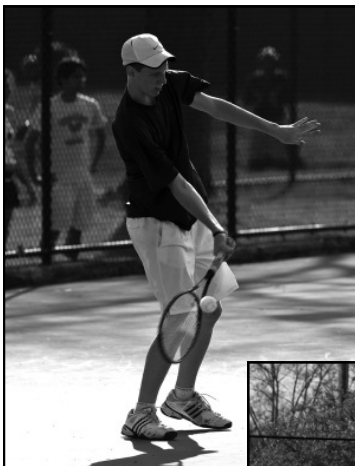
Moravian College
Bethlehem, Pennsylvania

Head Coach Bill Maxwell

Bill Maxwell enters his second season as the seventh men's tennis coach at Moravian as the program is set to begin its 63rd season in 2010-11. The Greyhounds have a 320-360-1 all-time record. Maxwell helped Moravian post a 7-8 record in his debut season and a berth in the 2010 Landmark Conference Tournament.

Prior to coming to Moravian, Maxwell served as the assistant men's and women's tennis coach at NCAA Division I Fairleigh Dickinson University for the past two years. Maxwell was also the head tennis professional at the Indian Trail Club, and has served as an instructor at the Quest Tennis Center and a coach at the Essex Hunt Club. In 1989, he was a regular practice partner for former world #1 ranked Tracy Austin as she attempted a comeback to professional tennis.

Maxwell is a 1991 graduate of Vanderbilt University where he played on the varsity team. He also has an MBA in finance/strategic management from Rutgers University Graduate School of Management.



2009-10 Season Review

Statistics

Singles

| Name | Overall | Dual | Landmark |
|------------------|---------|-------|----------|
| Nick Yelito | 13-8 | 10-4 | 6-0 |
| Kevin Holze | 10-12 | 7-8 | 5-2 |
| Drew Shreter | 8-13 | 7-8 | 5-2 |
| Chandler Forman | 7-6 | 6-5 | 5-0 |
| Ian Box | 5-13 | 4-10 | 4-3 |
| Thomas Turcich | 4-1 | 0-0 | 0-0 |
| Stefan Apostolos | 4-6 | 4-6 | 4-1 |
| Jason Bonilla | 3-3 | 1-2 | 1-0 |
| Doug Morrow | 2-9 | 2-5 | 2-2 |
| David Greene | 0-2 | 0-0 | 0-0 |
| Totals | 56-73 | 41-48 | 32-10 |

Doubles

| Name | Overall | Dual | Landmark |
|-------------------|---------|-------|----------|
| Forman/Turcich | 7-7 | 5-5 | 3-2 |
| Box/Shreter | 5-0 | 3-0 | 2-0 |
| Apostolos/Holze | 4-3 | 4-3 | 2-2 |
| Morrow/Yelito | 2-1 | 1-0 | 1-0 |
| Forman/Shreter | 2-2 | 2-2 | 2-0 |
| Apostolos/Morrow | 2-2 | 2-2 | 1-0 |
| Box/Morrow | 2-2 | 2-2 | 1-1 |
| Box/Holze | 2-9 | 2-6 | 2-1 |
| Apostolos/Shreter | 1-1 | 1-1 | 1-0 |
| Holze/Shreter | 1-1 | 0-0 | 0-0 |
| Turcich/Yelito | 0-1 | 0-1 | 0-0 |
| Holze/Morrow | 0-2 | 0-0 | 0-0 |
| Shreter/Yelito | 0-4 | 0-1 | 0-0 |
| Totals | 28-35 | 22-23 | 15-6 |

Awards

Ian Box

Landmark All-Conference First Team - Singles
Landmark All-Conference Second Team - Doubles
Landmark Conference Spring All-Academic Team
Landmark Conference Spring Academic Honor Roll

Kevin Holze

Landmark All-Conference Second Team - Singles

Doug Morrow

Landmark All-Conference Second Team - Doubles

Drew Shreter

Landmark Conference Spring Academic Honor Roll

Nick Yelito

Landmark Conference Spring Academic Honor Roll

2010-11 Season Preview

The 2010-11 Moravian College men's tennis team and second-year head coach Bill Maxwell are excited about the upcoming year as the Greyhounds compete in the fourth year of the Landmark Conference. Moravian hopes to challenge for the conference title again this spring and returns six of its starters from last year's squad.

Moravian posted an overall record of 7-8 and finished 5-2 in the Landmark Conference in 2009-10 as the Greyhounds made their fourth consecutive postseason appearance.

Junior Nick Yelito (Tamaqua, PA/Tamaqua HS) returns with Moravian's top singles record from last season, posting a 13-8 mark including 8-2 at sixth singles where he was 6-0 in Landmark Conference action. Junior Kevin Holze (Bayside, NY/St. Francis Prep HS) also returns to the Greyhounds line-up after earning Landmark All-Conference Second Team singles honors last year for a 10-12 season that included a 5-2 mark in conference play.

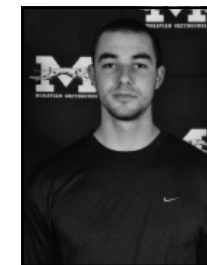
Holze also had a 4-3 doubles record with junior Stefan Apostolos (Hillsborough, NJ/Hillsborough HS), and Apostolos was 4-6 in singles action with a 4-1 mark in conference contests. Senior Doug Morrow (Coopersburg, PA/Southern Lehigh HS) was on the Landmark All-Conference Second Team in doubles a year ago but was injured for most of the season.

Junior Drew Shreter (Moorestown, NJ/Moorestown HS) had an 8-13 overall singles record in 2010 but was 5-2 in Landmark Conference matches, and he was 3-0 in action at first doubles. Senior Thomas Turcich (Haddon Township, NJ/Haddon Township HS) rounds out the Moravian returners having posted a 4-1 singles mark and a 7-7 doubles slate last season, the Greyhounds' top doubles record of the season.

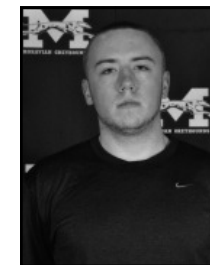
Coach Maxwell feels the team looks to be a strong competitor in the Landmark Conference. To prepare their squad, the coaching staff has a trio of fall tournaments scheduled and a trip to Florida during Spring Break in March before the Greyhounds begin their 2011 spring season.



Top Returning Players



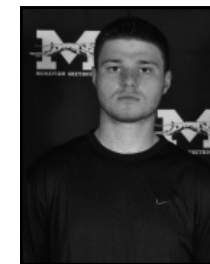
Stefan Apostolos
Junior
Hillsborough, NJ



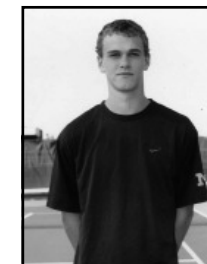
Kevin Holze
Junior
Bayside, NY



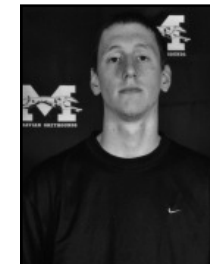
Doug Morrow
Senior
Coopersburg, PA



Drew Shreter
Junior
Moorestown, NJ



Thomas Turcich
Senior
Haddon Township, NJ



Nick Yelito
Junior
Tamaqua, PA

2010 Landmark Conference Standings

| | Conference | | | | Overall | | | |
|-----------------|------------|--------|-------|-------|---------|--------|------|--------|
| | MP | Record | % | GF GA | MP | Record | % | GF GA |
| Drew* | 7 | 7-0 | 1.000 | 54 7 | 18 | 12-6 | .667 | 103 49 |
| Scranton* | 7 | 6-1 | .857 | 48 15 | 21 | 15-6 | .714 | 120 65 |
| Moravian* | 7 | 5-2 | .714 | 47 16 | 15 | 7-8 | .467 | 63 71 |
| Catholic* | 7 | 4-3 | .571 | 35 28 | 20 | 11-9 | .550 | 92 86 |
| Susquehanna | 7 | 3-4 | .429 | 25 38 | 15 | 8-7 | .533 | 63 71 |
| Juniata | 7 | 2-5 | .286 | 17 46 | 19 | 7-12 | .368 | 67 104 |
| Goucher | 7 | 1-6 | .143 | 14 49 | 19 | 4-15 | .211 | 44 127 |
| Merchant Marine | 7 | 0-7 | .000 | 9 52 | 13 | 4-9 | .308 | 43 72 |

*Qualified for potseason tournament