

2010-11 Schedule

September

Sat.	4	at Ramapo College of New Jersey 4-Team Tournament (two matches)	9:00 a.m.
Sat.	12	at LaSalle University	1:00 ;.m.
Sat.	18	at Wilkes University	3:00 p.m.
Fri.-Sun.	24-26	at Intercollegiate Tennis Association Atlantic South Regional Tournament	TBA
Thurs.	30	at Muhlenberg College	4:00 p.m.

October

Sat.	2	vs. Dickinson College	12:00 p.m.
------	---	-----------------------	------------

March

Mon.-Fri.	7-11	Spring Break Trip (two matches to be scheduled)	
Sat.	19	vs. Juniata College*	12:00 p.m.
Sat.	26	vs. The Catholic University of America*	1:00 p.m.

April

Sat.	2	at Susquehanna University*	1:00 p.m.
Thurs.	7	vs. Haverford College	3:30 p.m.
Wed.	13	vs. The University of Scranton*	3:30 p.m.
Sat.	16	at Goucher College*	1:00 p.m.
Tues.	19	at Ursinus College	3:30 p.m.
Sat.	23	at Drew University*	12:00 p.m.
Wed.	27	Landmark Conference Semifinals (if qualify)	TBA
Sat.	30	Landmark Conference Championship (if qualify)	TBA

*Landmark Conference match

Home matches in bold

2009-10 Results (12-6)

vs. Bryn Mawr College#	Won 8-1
vs. Ramapo College of New Jersey#	Won 6-3
at DeSales University	PPD to 9/22
at Franklin & Marshall College	Lost 5-4
vs. Messiah College	Won 7-2
at DeSales University	Won 8-1
at Intercollegiate Tennis Association Northeast Regional Tournament	Individuals Only
vs. LaSalle University	Won 7-2
at Goucher College Invitational	Individuals Only
vs. Washington College of Maryland	Lost 7-2
vs. Muhlenberg College	Lost 5-3
at The Catholic University of America*	Won 8-1
at Juniata College*	Won 7-2
vs. Wilkes University	Won 5-4
vs. Susquehanna University*	Won 8-1
at The University of Scranton*	Lost 5-4
vs. Goucher College*	Won 8-1
vs. Ursinus College	Won 5-4
vs. Drew University*	Lost 7-2
at The University of Scranton in Landmark Conference Semifinals	Won 5-3
at Drew University in Landmark Conference Championship	Lost 5-2

*Landmark Conference match

#Moravian Four-Team Tournament played at Lehigh University

Moravian College Quick Facts

Location	Bethlehem, PA 18018
Founded	1742
Enrollment	1,532
Colors	Navy Blue & Grey
Nickname	Greyhounds
Affiliation	NCAA Division III
Conferences	Landmark Conference, Eastern College Athletic Conference
President	Christopher M. Thomforde
Director of Athletics	Paul R. Moyer
Sports Info. Director	Mark Fleming
Office Phone	(610) 861-1472
Home Phone	(610) 758-8721
Fax	(610) 861-1581
Hotline	(610) 625-7865
E-mail	sportsInfo@moravian.edu
Athletics Website	www.moravian.edu/athletics
Head Athletic Trainer	Bob Ward, ATC
Asst. Athletic Trainer	Lorrie Radcliff, ATC
Asst. Athletic Trainer	Frank Jackson, ATC

Women's Tennis Quick Facts

Home Court	Hoffman Tennis Courts, resurfaced in 2008
Head Coach	Dawn Ketterman-Benner (24th season, 237-89)
Office Phone	(610) 861-1530
Fax	(610) 625-7954
E-mail	womenstennis@moravian.edu
Associate Coach	Robert Risboskin
2009-10 Record	12-6
2009-10 Conf. Record	4-2, third place
Postseason	Landmark Conference Runner-Up
Starters Back/Lost	4/3
Lettermen Back/Lost	6/3

2010-11 Returnees

Stephanie Cox	Jr.	Mt. Laurel, NJ/Bishop Eustace
Elizabeth Endy	Sr.	Hummelstown, PA/Lower Dauphin
Jami Fein	Jr.	Blue Bell, PA/Wissahickon
Alexandra Hay	Jr.	East Stroudsburg, PA/East Stroudsburg South
Brianna Kavanagh	Jr.	Pittsgrove, NJ/Arthur P. Schalick
Kerry McKinley	Sr.	Sparta, NJ/Pope John XXIII

Action photographs by Specialty Photographic, Inc. &
Head shots by Ray Bishop Photography.
Brochures printed by Gillepsie Printing, Catasauqua, PA.

About Moravian College

Moravian College is a private, selective, liberal arts institution located in the heart of the Lehigh Valley in Bethlehem, Pennsylvania. Founded in 1742, it is recognized as the sixth-oldest college in the country. Enrollment is approximately 1,500 undergraduates each year, which maintains a favorable faculty to student ratio, small class size, and emphasis on personalized teaching.

Moravian believes its mission is to integrate a liberal arts education with preparation for life, enriching students in and out of the classroom. Moravian aims to give its students a foundation for careers or graduate/professional school, for continued lifelong learning, and for a values-oriented approach to society.

With over 50 different programs of study and more than 70 clubs and organizations, Moravian offers flexibility and diversity among all academic and extracurricular areas. The College grants the Bachelor of Art, Bachelor of Music, and Bachelor of Science degrees.

On the athletic fields, Moravian's 18 men's and women's varsity teams have a winning tradition. During the 2009-10 school year, Moravian teams won seven Landmark Conference championships with ten teams reaching post-season play including NCAA Championship berths for the baseball, women's basketball and softball teams. In addition, 13 student-athletes earned All-America status with three national champions in track & field.

Approximately one-quarter of Moravian's student body participates in intercollegiate athletics every year, and many more compete in club sports and intramurals. Moravian's student-athletes excel academically. The College has had 33 Academic All-Americans, while more than 70 student-athletes earn spots on the conference All-Academic Honor Rolls yearly.

A Division III institution, Moravian has excellent athletics facilities, including the venerable Johnston Hall, Breidegam Fieldhouse, and the Moravian College Steel Athletics complex, including Sportex Turf on Rocco Calvo Field and an eight-lane, Olympic-quality Mondo track, both installed in 2005.

The College has a strong sense of identity and purpose firmly rooted in a long and rich tradition. Both in and out of the classroom, Moravian and its students maintain that tradition.

For more information on enrolling at Moravian, contact:

Moravian College
Office of Admissions
1200 Main Street
Bethlehem, PA 18018
Tel: (610) 861-1320 or 800-441-3191
Fax: (610) 625-7930
Email: admissions@moravian.edu
www.moravian.edu



2010-11 Greyhound Women's Tennis



Moravian College
Bethlehem, Pennsylvania

Coach Dawn Ketterman-Benner

Beginning her 25th season as head coach of the women's tennis program, **Dawn Ketterman-Benner** has led the Hounds to a 249-95 record and conference championships in 1996, 1997, 1998, 2000, 2001, 2002, 2003, 2006, 2008 & 2009. **Ketterman-Benner** led Moravian to its first-ever NCAA Division III Tournament appearance in 2007. Over the last 16 years, Moravian has won ten conference titles and had a 226-38 record. **Ketterman-Benner**



was named the Commonwealth Conference Coach of the Year four times. **Ketterman-Benner** also earned the U.S. Tennis Association/Intercollegiate Tennis Association Community Service Award for the Middle States Tennis Association in 2004 and the Middle States/EPD Award for Courage in 2009.

Ketterman-Benner, who is associate athletic director, senior women's administrator and director of CHAMPS Life Skills, is a PTR certified professional teacher and a full professor in the physical education department. She has also served as coach for a variety of sports including volleyball, archery, badminton and field hockey. During her 13-year stint as volleyball coach, Moravian compiled a 165-103 record and won six MAC Southeast League titles.

Ketterman-Benner was the former chairperson of the MAC Tennis Games Committee and is now the Landmark Conference Tennis Chairperson, and she was recently appointed to the NCAA Division III Regional Tennis Committee. She is also on the NACWAA Membership Retention Committee.

Ketterman-Benner remains an active member of the Middle States Tennis Association and serves on the Lehigh Valley District XI Tennis Scholarship Committee. She was the MSTA Coach of the Year in 1999-2000 and was the EPD Coach of the Year in 2000-01 and 2007-08. **Ketterman-Benner** is the faculty advisor for the Moravian College Dance Company and the Moravian College cheerleaders, and she is the former Landmark Conference Student-Athlete Advisory Committee advisor.

Ketterman-Benner graduated with a Bachelor of Science in physical education from East Stroudsburg University, which inducted her into its Hall of Fame, received a Master of Science in education from Temple University in 1975 and continues to do post-graduate work in health education and wellness.



2009-10 Season Review

Statistics

Singles

Name	Overall	Dual	Landmark
Chelsea Ott	20-2	16-1	5-0
Jami Fein	19-4	14-3	5-1
Anna Meola	17-3	15-2	5-1
Brianna Kavanagh	11-7	9-6	4-2
Kerry McKinley	7-8	7-8	3-3
Elizabeth Endy	4-7	4-7	1-2
Alexandra Hay	2-2	2-2	-
Alex Van Buskirk	1-5	1-5	1-2
Stephanie Cox	0-1	0-1	0-1
Totals	81-40	68-36	24-12

Doubles

Name	Overall	Dual	Landmark
Meola/Ott	12-4	12-4	4-1
Fein/McKinley	9-8	9-8	4-2
Cox/Van Buskirk	6-2	3-2	2-1
Endy/Van Buskirk	3-1	3-1	2-0
Endy/Meola	1-0	1-0	1-0
McKinley/Meola	1-0	1-0	0-0
Fein/Ott	1-1	1-0	0-0
Endy/Hay	1-3	1-3	0-0
Endy/Kavanagh	0-2	0-2	0-0
Cox/Kavanagh	0-3	0-3	0-1
Totals	34-24	31-23	13-5

Awards

Elizabeth Endy

Landmark Conference Spring Academic Honor Roll
ITA Scholar-Athlete

Jami Fein

Landmark Conference Player of the Year
Landmark All-Conference First Team - Singles
Landmark All-Conference Second Team - Doubles
Landmark Conference Spring All-Academic Team
Landmark Conference Spring Academic Honor Roll
ITA Scholar-Athlete

Brianna Kavanagh

Landmark Conference Spring Academic Honor Roll

Anna Meola

Landmark All-Conference First Team - Doubles
Landmark All-Conference Second Team - Singles
Landmark Conference Spring Academic Honor Roll
ITA Scholar-Athlete

Kerry McKinley

Landmark All-Conference Second Team - Doubles
Landmark Conference Spring Academic Honor Roll

Chelsea Ott

Landmark Conference Rookie of the Year
Landmark All-Conference First Team - Singles
Landmark All-Conference First Team - Doubles

Team

ITA All-Academic Team

2010-11 Season Preview

Expectations are high for the 2010-11 Moravian College women's tennis team as the Greyhounds look to play for the conference title for the 17th straight season. In 2009-10, Moravian made its 15th straight conference title match before falling to Drew University, 5-2.

The Greyhounds were 12-6 overall in 2009-10 under the direction of head coach **Dawn Ketterman-Benner**, and the team was 4-2 in Landmark Conference action. The Greyhounds are returning six letterwinners from last year's squad including four starters.

Leading Moravian into the 2009-10 season will be junior **Jami Fein (Blue Bell, PA/Wissahickon HS)**, who posted a 19-4 singles record and a 9-8 doubles record with senior **Kerry McKinley (Sparta, NJ/Pope John XXIII HS)**. **Fein** was named the Landmark Conference Player of the Year for a second straight season and was on the Landmark All-Conference First Team in singles and the Second Team in doubles with **McKinley**, who was 7-8 in singles action.

Junior **Brianna Kavanagh (Pittsgrove, NJ/Arthur P. Schalick HS)** is also back after an 11-7 singles campaign last season.

Senior **Elizabeth Endy (Hummelstown, PA/Lower Dauphin HS)** was 4-7 in singles action and 5-6 in doubles action a year ago for the Greyhounds while junior **Alexandra Hay (East Stroudsburg, PA/East Stroudsburg South HS)** had a 2-2 singles record in limited action. Junior **Stephanie Cox (Mt. Laurel, NJ/Bishop Eustace HS)** was 6-5 in doubles action in her first year at Moravian.

Coach **Ketterman-Benner** returns nearly all of her players and is looking to return to the Landmark Conference Championship match at the end of the 2010-11 season. The Greyhounds get their season started in the fall when they travel to the Ramapo College of New Jersey Four-Team Invitational on Saturday, September 4th. Moravian begins its 2010-11 home season with a non-conference match versus Dickinson College on Saturday, October 2nd.



Top Returning Players



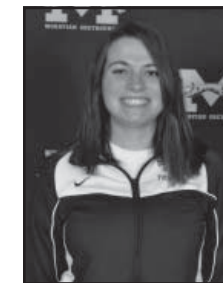
Elizabeth Endy
Senior
Hummelstown, PA



Jami Fein
Junior
Wissahickon, PA



Alexandra Hay
Junior
East Stroudsburg, PA



Brianna Kavanagh
Junior
Pittsgrove, NJ



Kerry McKinley
Senior
Sparta, NJ



Stephanie Cox
Junior
Mt. Laurel, NJ

2010 Landmark Conference Standings

	Conference					Overall				
	MP	Record	%	GF	GA	MP	Record	%	GF	GA
Drew*	6	6-0	1.000	43	11	15	12-3	.800	89	44
Scranton*	6	5-1	.833	29	25	16	9-7	.562	70	72
Moravian*	6	4-2	.667	37	17	18	12-6	.667	99	59
Susquehanna*	6	3-3	.500	29	25	14	8-6	.571	73	53
Juniata	6	2-4	.333	21	33	18	9-9	.500	83	79
Goucher	6	1-5	.167	18	36	16	8-8	.500	74	69
Catholic	6	0-6	.000	12	42	18	6-12	.333	68	94

*Qualified for postseason tournament