

2008 Schedule

August

2008 Swat Kick Classic, Swarthmore, PA

Sat.	30	vs. Stevens Institute of Technology	7:00 p.m.
Sun.	31	at Swarthmore College	5:00 p.m.

September

Wilkes University Tournament, Wilkes-Barre, PA

Sat.	6	vs. Smith College	11:00 a.m.
Sun.	7	vs. Marywood University	2:30 p.m.
Wed.	10	at King's College	7:00 p.m.
Sat.	13	at Wilkes University	1:00 p.m.
Wed.	17	vs. Haverford College	4:00 p.m.
Sat.	20	vs. Elizabethtown College	3:30 p.m.
Tues.	23	vs. Eastern University	4:00 p.m.
Sat.	27	at Juniata College*	1:00 p.m.

October

Wed.	1	at Philadelphia Biblical University	4:00 p.m.
Sat.	4	at York College of Pennsylvania	12:30 p.m.
Tues.	7	at Muhlenberg College	4:00 p.m.
Sat.	11	at Goucher College*	1:00 p.m.
Wed.	15	vs. Cabrini College	4:00 p.m.
Sat.	18	vs. Susquehanna University*	12:30 p.m.
Wed.	22	vs. The University of Scranton*	3:30 p.m.
Sat.	25	vs. The Catholic Univ. of America*	12:30 p.m.

November

Sat.	1	at Drew University*	1:00 p.m.
Wed.	5	Landmark Conference Semifinals	TBA
Sat.	8	Landmark Conference Championship	TBA

*Landmark Conference match

Home matches inbold

2007 Results (15-6-1)

at St. Mary's College of Maryland	Won 1-0
at Dickinson College	Won 3-1
vs. Skidmore College in 13th Annual Valiant Classic	Lost 2-1
at Manhattanville College in 13th Annual Valiant Classic	Won 2-0
vs. King's College	Won 2-1 (2 ot)
vs. Wilkes University	Won 1-0
at Haverford College	Lost 1-0
vs. Juniata College*	Won 2-0
vs. Farmingdale State University	Won 3-1
vs. Villa Julie College	Won 2-0
vs. Muhlenberg College	Won 1-0
vs. Philadelphia Biblical University	Won 4-1
vs. Goucher College*	Won 9-1
at Lebanon Valley College	Tied 0-0
at Susquehanna University*	Won 2-0
at The University of Scranton*	Lost 2-0
at The Catholic University of America*	Won 3-0
at Eastern University	Lost 2-0
vs. Drew University*	Won 2-0
vs. The Catholic Univ. of America in Landmark Semifinals	Won 2-0
at The University of Scranton in Landmark Championship	Lost 4-2
at Hamilton College (NY) in NCAA Tournament First Round	Lost 2-0

*Landmark Conference match

Moravian College Quick Facts

Location	Bethlehem, PA 18018
Founded	1742
Enrollment	1,533
Colors	Navy Blue & Grey
Nickname	Greyhounds
Affiliation	NCAA Division III
Conferences	Landmark Conference, Eastern College Athletic Conference
President	Christopher M. Thomforde
Director of Athletics	Paul R. Moyer
Sports Info. Director	Mark Fleming
Office Phone	(610) 861-1472
Home Phone	(610) 758-8721
Fax	(610) 861-1581
Hotline	(610) 625-7865
E-mail	sportsInfo@moravian.edu
Athletics Website	www.moravian.edu/athletics
Head Athletics Trainer	Bob Ward, ATC
Asst. Athletics Trainer	Lorrie Radcliff, ATC
Asst. Athletics Trainer	Anita Fanelli, ATC

Women's Soccer Quick Facts

Home Field	Moravian Quad (Grass) with new irrigation system & surface in 2004
Head Coach	Eric Lambinus (10th year, 107-52-12)
Office Phone	(610) 625-7953
Fax	(610) 625-7954
E-mail	soccer@moravian.edu
Assistant Coaches	Kate Miller, Jill Vaccaro, Kristina Adams
2007 Record	15-6-1
2007 Conf. Record	5-1, tied for first
Postseason	Landmark Conference Runner-Up NCAA Div. III Tournament First Round
Starters Back/Lost	8/3
Lettermen Back/Lost	17/4

2008 Returnees

Georgia Castellano	Sr.	D	Cherry Hills, NJ/Cherry Hills West
Caitlin Corrigan	Sr.	GK	Perkasie, PA/Pennridge
Brittany Deiling	Jr.	MF/F	Chews Landing, NJ/Triton Regional
Tracy Fitzpatrick	Sr.	MF/F	Wantage, NJ/High Point Regional
Alexandra Frascella	Sr.	D	Chatham, NJ/Chatham
Amanda Friedman	Jr.	F	Randolph, NJ/Randolph
Mallory Goggins	So.	F	Wilmington, DE/Wilmington Friends School
Sarah Halpin	So.	GK	Downingtown, PA/Downingtown West
Katelyn Killea	Sr.	MF	Chatham, NJ/Chatham
Shannon McEvoy	So.	MF	Lafayette, NJ/High Point
Jenelle Mirro	So.	F	Bath, PA/Notre Dame
Terri Roberts	Jr.	D	Danville, PA/Danville
Emily Rodriguez	So.	MF	Bethlehem, PA/Liberty
Kaitlyn Russell	So.	D	South River, NJ/South River
Alessandra Valdetara	Jr.	F	Butler, NJ/Butler
JeriAnne Weiss	Jr.	MF	Allentown, PA/Salisbury
Kathleen Wise	Jr.	MF	Ardslay, PA/Abington

About Moravian College

Moravian College is a private, selective liberal arts institution located in the heart of the Lehigh Valley, in Bethlehem, Pennsylvania. Founded in 1742, it is recognized as the sixth-oldest college in the country. Enrollment is approximately 1,500 undergraduates each year, which maintains a favorable faculty to student ratio, small class size, and emphasis on personalized teaching.

Moravian College believes its mission is to integrate a liberal arts education with preparation for life, enriching students in and out of the classroom. Moravian aims to give its students a foundation for careers or graduate/professional school, for continued lifelong learning, and for a values-oriented approach to society.

With over 50 different programs of study and more than 70 clubs and organizations, Moravian offers flexibility and diversity among all academic and extracurricular areas. The College grants the Bachelor of Art, Bachelor of Music, and Bachelor of Science degrees.

On the athletic fields, Moravian's 20 men's and women's varsity teams have a winning tradition. During the 2007-08 school year, Moravian teams won six Landmark Conference championships, with 11 teams reaching post-season play including NCAA Championship berths for the women's soccer and men's basketball teams and ECAC Championships for the women's indoor and outdoor track & field squads and the men's outdoor track & field team. In addition, nine student-athletes earned All-America status including one *ESPN The Magazine* Academic All-American and two national champions in track & field.

A Division III institution, Moravian has excellent athletics facilities, including the venerable Johnston Hall, Breidegam Fieldhouse, and the Steel Field athletics complex, including Sportexe Turf on Rocco Calvo Field and an eight-lane, Olympic-quality Mondo track, both installed in 2005.

The College has a strong sense of identity and purpose firmly rooted in a long and rich tradition. Both in and out of the classroom, Moravian and its students maintain that tradition.

For more information on enrolling at Moravian, contact:

Moravian College
Office of Admissions
1200 Main Street
Bethlehem, PA 18018
Tel: (610) 861-1320 or 800-441-3191
Fax: (610) 625-7930
Email: admissions@moravian.edu
www.moravian.edu



2008 GREYHOUND WOMEN'S SOCCER



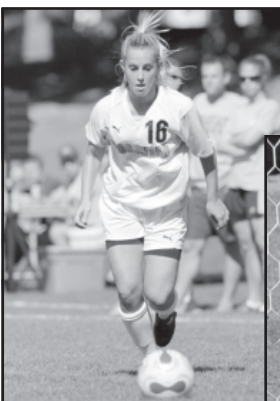
Moravian College
Bethlehem, Pennsylvania

Head Coach Eric Lambinus

Eric Lambinus is beginning his tenth season as head men's and women's soccer coach at his alma mater. In his first nine years at the helm of the Greyhounds, **Lambinus** has the women's squad to a 107-52-12 mark and the first five playoff berths the program has ever had including berths in the NCAA Division III National Championship Tournament in 2005 and 2007, a berth in the 2007 Landmark Conference Championship match, four appearances in the in Commonwealth Conference Tournament including the championship match in 2005, and the 2003 ECAC Mid-Atlantic Championship match, and he has led the men's team to a 70-92-13 record, their first playoff appearance in ten years, four Commonwealth Conference playoff berths and two ECAC Tournament appearances.

Lambinus graduated from Moravian in 1994 after an outstanding athletic career. On the soccer field, **Lambinus** was a four-time All-MAC All-Star and led the team to a MAC Southern Division Championship. He also earned MAC All-Academic honors as well as Mid-Atlantic Region Academic and All-American honors. He also played tennis at Moravian and served as team captain for both soccer and tennis and was the soccer team's MVP as a junior and senior. **Lambinus** scored 88 points in his soccer career with 33 goals and 22 assists.

A former professional soccer player and captain of the Reading Rage Soccer Team, **Lambinus** earned his Bachelor's of Arts degree from Moravian and completed the Master of Health and Physical Education program at East Stroudsburg University of Pennsylvania in May of 1999.



2007 Season Review

Statistics

Name	GP	Sh	G	A	Pts
Tracy Fitzpatrick	21	87	14	5	33
Alessandra Valdetara	21	31	5	5	15
Nina Rizzo	22	19	4	1	9
Shannon McEvoy	21	18	3	2	8
Allison Solomita	22	24	2	4	8
Jill Newswanger	22	24	3	1	7
Terri Roberts	22	15	2	1	5
Mallory Goggins	11	9	2	1	5
Jenelle Mirro	17	19	2	0	4
Kathleen Wise	22	5	1	2	4
Emily Rodriguez	20	18	1	1	3
Amanda Friedman	15	7	1	1	3
Brittany Deiling	15	4	1	1	3
Katelyn Killea	22	14	1	0	2
JeriAnne Weiss	20	13	0	2	2
Alexandra Frascella	22	6	0	2	2
Georgia Castellano	4	1	0	1	1
Caitlin Corrigan	22	0	0	1	1
Robyn Klem	17	1	0	0	0
Kaitlyn Russell	2	0	0	0	0
Total	22	315	42	31	115
Opponents	22	196	18	15	51

Goalie Statistics

Name	GP	Min	GA	GAA	SV	SV%	W-L-T	Sho
Caitlin Corrigan	22	1936:04	17	0.79	81	.827	15-6-1	11
Sarah Halpin	2	52:16	1	1.72	1	.500	0-0-0	0
Total	22	1988:20	18	0.81	85	.825	15-6-1	11
Opponents	22	1988:20	42	1.90	118	.738	6-15-1	5

Awards

Caitlin Corrigan
Landmark All-Conference First Team
Brittany Deiling
Landmark Conference Fall Academic Honor Roll
Tracy Fitzpatrick
Landmark All-Conference First Team
Landmark Conference Offensive Player of the Year
NSCAA/Adidas All-Mid-Atlantic Region Second Team
D3Kicks.com All-Mid-Atlantic Region Second Team
Landmark Conference Fall Academic Honor Roll
Landmark Conference Fall All-Academic Team
Alexandra Frascella
Landmark Conference Fall Academic Honor Roll
Amanda Friedman
Landmark Conference Fall Academic Honor Roll
Robyn Klem
Landmark All-Conference Second Team
Jill Newswanger
Landmark Conference Fall Academic Honor Roll
Terri Roberts
Landmark All-Conference Second Team
Landmark Conference Fall Academic Honor Roll
Alison Solomita
Landmark Conference Fall Academic Honor Roll
Alessandra Valdetara
Landmark All-Conference First Team
Landmark Conference Fall Academic Honor Roll
JerriAnne Weiss
Landmark Conference Fall Academic Honor Roll
Kaite Wise
Landmark Conference Fall Academic Honor Roll

2008 Season Preview

Expectations are high again this season for the Moravian College women's soccer team with the 2008 squad returning 17 letterwinners and seven starters from last year's 15-6-1 team. Last season, the Greyhounds reached the first round of the 2007 NCAA Division III National Championship Tournament but came up short losing to Hamilton College, 2-0.

Head Coach **Eric Lambinus** is going into his tenth year as coach of the squad and he feels that the team can get back into the NCAA Championship Tournament with some hard work and leadership from his returning players.

Leading the Greyhounds will be senior midfielder/forward **Tracy Fitzpatrick (Wantage, NJ/High Point Regional HS)**, who missed all of the 2006 season with an injury after making the All-Region team as a freshman in 2005. **Fitzpatrick** had 14 goals and five assists for a total of 33 points and was named the Landmark Conference Offensive Player of the Year in the 2007 season. She was also on the Landmark All-Conference First Team and the All-Region Second Team.

Junior midfielder **Alessandra Valdetara (Butler, NJ/Butler HS)** hit the back of the net five times to go along with five assists for a total of 15 points in 2007. Sophomore midfielder **Shannon McEvoy (Lafayette, NJ/High Point HS)** put up three goals and two assists for eight points.

Junior defender **Terri Roberts (Danville, PA/Danville HS)**, who was named to the Landmark All-Conference Second Team, scored two goals with one assist while sophomore forwards **Mallory Goggins (Wilmington, DE/Wilmington Friends School)** and **Jenelle Mirro (Bath, PA/Notre Dame HS)** each recorded two goals for the year with Goggins adding in an assist as well.

Junior defender **Kathleen Wise (Ardley, PA/Abington HS)** had one goal and two assists while junior midfielders **Amanda Friedman (Randolph, NJ/Randolph HS)** and **Brittany Deiling (Chews Landing, NJ/Triton Regional HS)** and sophomore midfielder **Emily Rodriguez (Bethlehem, PA/Liberty HS)** each contributed one goal and one assist for the 2007 season.

Senior defender **Katelyn Killea (Chatham, NJ/Chatham HS)** added a goal of her own while senior defender **Alexandra Frascella (Chatham, NJ/Chatham HS)** and sophomore midfielder **JeriAnne Weiss (Allentown, PA/Salisbury HS)** each contributed two assists on the year. Senior defender **Georgia Castellano (Cherry Hills, NJ/Cherry Hills West HS)** put up one assist as well. Also contributing last year for the Greyhounds was sophomore defender **Kaitlyn Russell (South River, NJ/South River HS)**.

Time in goal was split between junior **Caitlin Corrigan (Perkasie, PA/Pennridge HS)**, who had a 0.79 goals against average and 81 saves, and freshmen **Sarah Halpin (Downingtown, PA/Downingtown West HS)**, who had one goal against and one save. **Corrigan** was also named to the Landmark All-Conference First Team.

Coach **Lambinus** has brought another talented recruiting class to Moravian campus that looks to help the returning Greyhounds earn a berth into the Landmark Conference Tournament and battle back into the NCAA Tournament.

Moravian will open its 2008 season on Saturday, August 30th against Stevens Institute of Technology at 7 p.m. at the Swat Kick Classic, in Swarthmore PA.

Action photographs by John Ferko, Jr.

Head shots by Ray Bishop Photography.

Research & editing assistance by Nick Pepi '10.

Brochure printed by Gillespie Printing, Catasauqua, PA.

Top Returning Players



Caitlin Corrigan
Senior, Goalie
Perkasie, PA



Tracy Fitzpatrick
Senior, Forward
Wantage, NJ



Alexandra Frascella
Senior, Midfielder
Chatham, NJ



Katelyn Killea
Senior, Midfielder
Chatham, NJ



Terri Roberts
Junior, Defender
Danville, PA



Alessandra Valdetara
Junior, Forward
Butler, NJ

2007 Landmark Conference Standings

	Conference					Overall				
	GP	Record	%	GF	GA	GP	Record	%	GF	GA
Moravian*	6	5-1	0.833	18	3	22	15-6-1	0.705	42	18
Scranton*	6	5-1	0.833	16	2	20	9-9-2	0.500	30	25
Catholic*	6	3-1-2	0.667	8	4	20	12-3-5	0.725	50	20
Juniata*	6	2-2-2	0.500	10	7	18	9-6-3	0.583	46	21
Drew	6	2-3-1	0.417	8	7	18	5-8-5	0.417	19	29
Susquehanna	6	1-4-1	0.250	3	6	18	7-10-1	0.417	16	22
Goucher	6	0-6	0.000	1	35	15	3-12	0.200	27	59

*Qualified for postseason tournament