

2010 Greyhound Women's Soccer



Moravian College
Bethlehem, Pennsylvania

About Moravian College

Moravian College is a private, selective, liberal arts institution located in the heart of the Lehigh Valley in Bethlehem, Pennsylvania. Founded in 1742, it is recognized as the sixth-oldest college in the country. Enrollment is approximately 1,500 undergraduates each year, which maintains a favorable faculty to student ratio, small class size, and emphasis on personalized teaching.

Moravian believes its mission is to integrate a liberal arts education with preparation for life, enriching students in and out of the classroom. Moravian aims to give its students a foundation for careers or graduate/professional school, for continued lifelong learning, and for a values-oriented approach to society.

With over 50 different programs of study and more than 70 clubs and organizations, Moravian offers flexibility and diversity among all academic and extracurricular areas. The College grants the Bachelor of Art, Bachelor of Music, and Bachelor of Science degrees.

On the athletic fields, Moravian's 18 men's and women's varsity teams have a winning tradition. During the 2009-10 school year, Moravian teams won seven Landmark Conference championships with ten teams reaching post-season play including NCAA Championship berths for the baseball, women's basketball and softball teams. In addition, 13 student-athletes earned All-America status with three national champions in track & field.

Approximately one-quarter of Moravian's student body participates in intercollegiate athletics every year, and many more compete in club sports and intramurals. Moravian's student-athletes excel academically. The College has had 33 Academic All-Americans, while more than 70 student-athletes earn spots on the conference All-Academic Honor Rolls yearly.

A Division III institution, Moravian has excellent athletics facilities, including the venerable Johnston Hall, Breidegam Fieldhouse, and the Moravian College Steel Athletics complex, including Sportex Turf on Rocco Calvo Field and an eight-lane, Olympic-quality Mondo track, both installed in 2005.

The College has a strong sense of identity and purpose firmly rooted in a long and rich tradition. Both in and out of the classroom, Moravian and its students maintain that tradition.

For more information on enrolling at Moravian, contact:

Moravian College
Office of Admissions
1200 Main Street
Bethlehem, PA 18018
Tel: (610) 861-1320 or 800-441-3191
Fax: (610) 625-7930
Email: admissions@moravian.edu
www.moravian.edu



Moravian College Quick Facts

Location	Bethlehem, PA 18018
Founded	1742
Enrollment	1,564
Colors	Navy Blue & Grey
Nickname	Greyhounds
Affiliation	NCAA Division III
Conferences	Landmark Conference, Eastern College Athletic Conference
President	Christopher M. Thomforde
Director of Athletics	Paul R. Moyer
Sports Info. Director	Mark Fleming
Office Phone	(610) 861-1472
Home Phone	(610) 758-8721
Fax	(610) 861-1581
Hotline	(610) 625-7865
E-mail	sportsInfo@moravian.edu
Athletics Website	www.moravian.edu/athletics
Head Athletic Trainer	Bob Ward, ATC
Asst. Athletic Trainer	Lorrie Radcliff, ATC
Asst. Athletic Trainer	Frank Jackson, ATC

Women's Soccer Quick Facts

Home Field	Moravian Quad (Grass) with new irrigation system & surface in 2004
Head Coach	Brienne Smith (1st year)
Office Phone	(610) 625-7953
Fax	(610) 625-7954
E-mail	wsoccer@moravian.edu
Assistant Coaches	Vanessa Fyffe, Stephanie Peel
2009 Record	8-8-2
2009 Conf. Record	3-2-1, tied for fourth
Postseason	ECAC South Quarterfinalist
Starters Back/Lost	8/3
Lettermen Back/Lost	15/8

2010 Returnees

Tara Alberse	Sr.	MF	New Providence, NJ/New Providence
Eileen Black	So.	D	Branchburg, NJ/Somerville
Elizabeth Brundage	Jr.	MF/D	Clarks Summit, PA/Abington Heights
Arielle Caldas	Jr.	F	Cherry Hills, NJ/Cherry Hill West
Diana Feldmann	Jr.	D/MF	York, PA/Central York
Kim Gogel	Jr.	MF	Whippany, NJ/Whippany Park
Sarah Halpin	Sr.	GK	Downingtown, PA/Downingtown West
Toni Korona	Jr.	GK	Easton, PA/Easton
Shannon McEvoy	Sr.	MF	Lafayette, NJ/High Point
Jenelle Mirro	Sr.	F	Bath, PA/Notre Dame
Kim Mogg	Jr.	D	Stamford, CT/West Hill
Kristin Popovice	Jr.	D	Roseto, PA/Bangor
Emily Rodriguez	Sr.	MF	Bethlehem, PA/Liberty
Kaitlyn Russell	Sr.	D	South River, NJ/South River
Jenna Stickle	Jr.	MF	Hillsborough, NJ/Hillsborough

Action photographs by Specialty Photographic, Inc.

Head shots by Ray Bishop Photography.

Brochure printed by Gillespie Printing, Catasauqua, PA.

2010 Schedule

September

Wed.	1 vs. Lebanon Valley College	4:00 p.m.
	<i>Herb Lauffer Memorial Tournament at Penn State Behrend</i>	
Sat.	4 vs. Baldwin-Wallace (OH) College	12:00 p.m.
Sun.	5 vs. Hiram (OH) College	10:00 a.m.
Wed.	8 vs. Ursinus College	4:00 p.m.
Sat.	11 at Wilkes University	7:00 p.m.
Wed.	15 at Delaware Valley College	4:00 p.m.
Sat.	18 at Dickinson College	1:00 p.m.
Wed.	22 vs. Elizabethtown College	4:00 p.m.
Sat.	25 at Drew University*	1:00 p.m.
Wed.	29 vs. Eastern University	4:00 p.m.

October

Sat.	2 at Juniata College*	1:00 p.m.
Wed.	6 at Muhlenberg College	4:00 p.m.
Sat.	9 vs. Rowan (NJ) University	3:00 p.m.
Wed.	13 vs. Haverford College	4:00 p.m.
Sat.	16 at Goucher College*	1:00 p.m.
Tues.	19 vs. The University of Scranton*	4:00 p.m.
Sat.	23 vs. Susquehanna University*	12:30 p.m.
Wed.	27 at York College of Pennsylvania	3:30 p.m.
Sat.	30 vs. The Catholic University of America*	12:30 p.m.

November

Wed.	3 Landmark Conference Semifinals (if qualify)	TBA
Sat.	6 Landmark Conference Championship (if qualify)	TBA

*Landmark Conference match

Home matches in bold

2009 Results (8-8-2)

at Ursinus College	Lost 3-2
at Misericordia University in Misericordia Tournament	Lost 2-1
vs. Lycoming College in Misericordia Tournament	Won 2-0
vs. Delaware Valley College	Won 4-0
vs. Wilkes University	Lost 2-1
at Haverford College	Tied 2-2 (2ot)
at Elizabethtown College	Won 1-0
vs. King's College	Won 7-1
vs. Drew University*	Won 3-0
at Eastern University	Lost 1-0
vs. Juniata College*	Won 2-0
vs. Muhlenberg College	Won 2-1 (ot)
at Rowan University	Lost 3-1
vs. Goucher College*	Won 3-1
at The University of Scranton*	Tied 1-1 (2ot)
at Susquehanna University*	Lost 2-0
vs. York College of Pennsylvania	Cancelled
at The Catholic University of America*	Lost 3-2 (ot)
at #2 Stevenson University in ECAC Division III South Championship Tournament Quarterfinal match	Lost 3-2 (2ot)

*Landmark Conference match

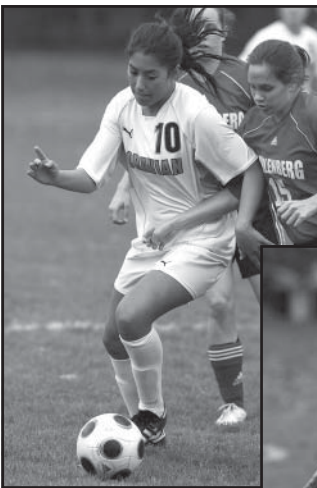
Head Coach Brienne Smith

Brienne Smith has been named the fourth head coach of the Moravian College women's soccer team as the program is set to begin its 17th season in 2010. The Greyhounds have a 184-91-19 all-time record.

Smith, who most recently served as assistant head coach at Tufts (Mass.) University, replaces Eric Lambinus, who became the head women's soccer coach at NCAA Division I Lehigh University back in February.

Smith has spent the last nine years at Tufts University, helping the Jumbos post an 82-38-12 record with NCAA Division III Tournament berths in 2002, 2005 and 2007. She also served as head coach of the U-18 Girls Dynamis United from 2006 until 2008.

Smith is a 2001 graduate of Clark (Mass.) University, earning a Bachelor of Arts in psychology with a minor in education. She completed a Master of Science in physical education at Bridgewater State (Mass.) College in 2007.



2010 Season Review

Statistics

Name	GP	Shots	G	A	Pts
Arielle Caldas	14	13	3	29	38
Shannon McEvoy	17	5	5	15	43
Alessandra Valdetarra	18	5	4	14	39
Tess Lowe	18	2	3	7	6
Emily Rodriguez	17	0	7	7	18
Diana Feldmann	18	2	2	6	8
Kim Gogel	10	1	4	6	4
Eileen Black	17	2	1	5	12
Tara Alberse	15	2	1	5	6
JeriAnne Weiss	18	1	1	3	14
Kristin Popovice	10	1	0	2	3
Jenelle Mirro	9	1	0	2	3
Amanda Friedman	6	1	0	2	2
Jenna Stickle	18	0	1	1	18
Terri Roberts	17	0	1	1	4
Elizabeth Brundage	12	0	1	1	2
Margaret DeOliveira	15	0	0	0	3
Kaitlyn Russell	3	0	0	0	1
Sarah Halpin	17	0	0	0	0
Kathleen Wise	15	0	0	0	0
Brittany Deiling	9	0	0	0	0
Tori Korona	2	0	0	0	0
Kim Mogg	1	0	0	0	0
Totals	18	36	34	106	224
Opponents	18	25	13	63	221

Goalie Statistics

Name	GP	Min	GA	GAA	SV	SV%	W-L-T	Sho
Sarah Halpin	17	1565:27	22	1.26	70	.761	8-7-2	5
Tori Korona	2	110:52	3	2.44	8	.727	0-1-0	0
TEAM		0:00	0	0.00	5	1.000	0-0-0	0
Total	18	1676:19	25	1.34	83	.769	8-8-2	5
Opponents	18	1676:19	36	1.93	95	.725	8-8-2	2

Awards

Tara Alberse	Landmark Conference Fall Academic Honor Roll
Eileen Black	Landmark All-Conference Second Team
Elizabeth Brundage	Landmark Conference Fall Academic Honor Roll
Brittany Deiling	Landmark Conference Fall Academic Honor Roll
Diana Feldman	Landmark All-Conference First Team Landmark Conference Fall All-Academic Team Landmark Conference Fall Academic Honor Roll <i>ESPN The Magazine</i> Academic All-District Second Team
Kim Gogel	Landmark Conference Fall Academic Honor Roll
Sarah Halpin	Landmark Conference Fall Academic Honor Roll <i>ESPN The Magazine</i> Academic All-District First Team
Shannon McEvoy	Landmark All-Conference Second Team
Terri Roberts	Landmark Conference Fall Academic Honor Roll
Emily Rodriguez	Landmark All-Conference Second Team
Kaitlyn Russell	Landmark Conference Fall Academic Honor Roll
Alessandra Valdetarra	Landmark All-Conference Second Team Landmark Conference Fall Academic Honor Roll
JeriAnne Weiss	Landmark Conference Fall Academic Honor Roll

2010 Season Preview

Expectations are high again this season for the Moravian College women's soccer team with the 2010 squad returning 15 letterwinners and eight starters from last year's 8-8-2 team. Last season, the Greyhounds reached the quarterfinals of the Eastern College Athletic Conference South Championship Tournament.

First-year head coach **Brienne Smith** has a strong returning corps of players in her debut season.

Leading the Greyhounds will be junior forward **Arielle Caldas (Cherry Hill, NJ/Cherry Hill West HS)**, who had a team leading 13 goals and three assists for 29 points. **Caldas**, who missed five matches due to injury, also had three game-winning goals.

Also returning up front is senior forward **Shannon McEvoy (Lafayette, NJ/High Point HS)**, who earned a spot on the Landmark All-Conference Second Team after contributing five goals and five assists for 15 points. Senior **Jenelle Mirro (Bath, PA/Notre Dame HS)** also returns after being limited to a goal in nine matches last season.

Senior **Emily Rodrigues (Bethlehem, PA/Liberty HS)** will anchor the midfield for Moravian after earning Landmark All-Conference Second Team accolades last season while posting a team high seven assists. Junior midfielder **Kim Gogel (Whippany, NJ/Whippany Park HS)** has a goal and four assists for six points in 2009 while senior **Tara Alberse (New Providence, NJ/New Providence HS)** had two goals and an assist for five points.

Junior midfielder **Jenna Stickle (Hillsborough, NJ/Hillsborough HS)** played in every match in her first season last fall and had one assist while junior midfielder **Kristin Popovice (Roseto, PA/Bangor HS)** had one goal.

Junior **Diana Feldmann (York, PA/Central York HS)** will anchor Moravian's defense after earning Landmark All-Conference First Team honors last season. **Feldmann** contributed two goals and two assists for six points while sophomore defender **Eileen Black (Branchburg, NJ/Somerville HS)** was named to the Landmark All-Conference Second Team with two goals and an assist for five points in her debut season.

Senior defender **Kaitlyn Russell (South River, NJ/South River HS)** and junior defender **Kim Mogg (Stamford, CT/West Hill HS)** add depth to the Greyhounds' defense.

Moravian has a pair of goalies returning in 2010 led by senior **Sarah Halpin (Downingtown, PA/Downingtown West HS)**. In her first year as a starter last fall, **Halpin** posted an 8-7-2 record with five shutouts, a 1.26 goals-against average, 70 saves and a .761 save percentage in 1,565 minutes of action. Junior **Tori Korona (Easton, PA/Easton HS)** played 111 minutes last season with eight saves and a 2.44 goals-against average.

Coach **Smith** has six newcomers to go with her 15 returning players as she tries to lead the Greyhounds back to the Landmark Conference Tournament this fall.

Moravian will open its 2010 season at home on Wednesday, September 1st in a non-conference match versus Lebanon Valley College on the HUB Quad at 4:00 p.m. The Greyhounds will begin their 2010 Landmark Conference season on Saturday, September 25th in a 1:00 p.m. match at Drew University.

Top Returning Players



Arielle Caldas
Junior, Forward
Cherry Hills, NJ



Diana Feldmann
Junior, Defender
York, PA



Kim Gogel
Junior, Midfielder
Whippany, NJ



Sarah Halpin
Senior, Goalie
Downingtown, PA



Shannon McEvoy
Senior, Forward
Lafayette, NJ



Emily Rodriguez
Senior, Midfielder
Bethlehem, PA

2009 Landmark Conference Standings

	Conference					Overall				
	MP	Record	%	GF	GA	MP	Record	%	GF	GA
Catholic*	6	4-1-1	.750	14	5	21	17-3-1	.822	58	20
Drew*	6	4-1-1	.750	11	5	19	7-8-4	.474	35	27
Susquehanna*	6	4-2-0	.667	6	4	19	7-8-4	.474	23	11
Scranton*	6	3-2-1	.583	6	5	19	13-4-2	.737	34	15
Moravian	6	3-2-1	.583	11	7	18	8-8-2	.500	36	25
Juniata	6	1-5-0	.167	3	14	17	5-12-0	.294	11	33
Goucher	6	0-6-0	.000	1	12	17	3-13-1	.206	12	31

*Qualified for postseason tournament