



MAIN STREET ENTRY VIEW



GRAPHIC SCALE: 1/32" = 1'-0"  
0 4 8 12 16 20 24 28 32 36 40 44 48 52 56 60 64 68 72 76 80 84 88 92 96 100

GRAPHIC SCALE: 1/16" = 1'-0"  
0 4 8 12 16 20 24 28 32 36 40 44 48 52 56 60 64 68 72 76 80 84 88 92 96 100

GRAPHIC SCALE: 3/32" = 1'-0"  
0 4 8 12 16 20 24 28 32 36 40 44 48 52 56 60 64 68 72 76 80 84 88 92 96 100

GRAPHIC SCALE: 1/8" = 1'-0"  
0 4 8 12 16 20 24 28 32 36 40 44 48 52 56 60 64 68 72 76 80 84 88 92 96 100

GRAPHIC SCALE: 3/16" = 1'-0"  
0 4 8 12 16 20 24 28 32 36 40 44 48 52 56 60 64 68 72 76 80 84 88 92 96 100

GRAPHIC SCALE: 1/4" = 1'-0"  
0 4 8 12 16 20 24 28 32 36 40 44 48 52 56 60 64 68 72 76 80 84 88 92 96 100

GRAPHIC SCALE: 1/2" = 1'-0"  
0 4 8 12 16 20 24 28 32 36 40 44 48 52 56 60 64 68 72 76 80 84 88 92 96 100

GRAPHIC SCALE: 3/4" = 1'-0"  
0 4 8 12 16 20 24 28 32 36 40 44 48 52 56 60 64 68 72 76 80 84 88 92 96 100

GRAPHIC SCALE: 1" = 1'-0"  
0 4 8 12 16 20 24 28 32 36 40 44 48 52 56 60 64 68 72 76 80 84 88 92 96 100

- ### GENERAL NOTES
- SEE GENERAL NOTES ON COVER SHEET FOR MORE INFORMATION CONCERNING WORK NOT SHOWN ON DRAWINGS.
  - ALLOW A MINIMUM OF 18 INCHES LATCH-SIDE CLEARANCE ON THE PULL SIDE OF ALL DOORS WITH MANUAL CLOSERS AND A MINIMUM OF 12 INCHES LATCH-SIDE CLEARANCE ON THE PUSH SIDE OF ALL DOORS WITH MANUAL CLOSERS.
  - ALLOW A MINIMUM OF 1 INCH CLEARANCE FROM THE EDGE OF ALL WALLS AND THE OUTSIDE FACE OF CASEWORK, TYPICAL.
  - SEE THE OWNER FURNISHED EQUIPMENT BROCHURE FOR SPECIFIC INFORMATION ON EACH PIECE OF OWNER FURNISHED EQUIPMENT SHOWN ON THE PLANS. ALSO SEE VENDOR DRAWINGS PROVIDED FOR POSSIBLE WORK REQUIRED FOR EACH SPECIFIC VENDOR EQUIPMENT. CONFIRM WORK REQUIRED FOR EACH PIECE OF EQUIPMENT BEFORE COMPLETING CONSTRUCTION FOR THOSE SPACES.
  - 1888 INDICATES DOOR NUMBER. SEE DOOR SCHEDULE FOR SPECIFIC INFORMATION ON EACH DOOR.
  - SEE FINISH DRAWINGS FOR SPECIFIC FINISH AND SURFACE PREPARATION REQUIREMENTS FOR EACH SPACE.
  - SEE REFLECTED CEILING PLANS FOR SPECIFIC CEILING TYPES, HEIGHTS, DETAILS, LIGHTS, DIFFUSERS, ETC.
  - SEE CASEWORK DRAWINGS FOR SPECIFIC CASEWORK SIZES, FINISHES, AND OTHER REQUIREMENTS.
  - SEE STRUCTURAL DRAWINGS FOR ANY MISCELLANEOUS FRAMING MEMBERS THAT ARE WITH WALL CONSTRUCTION ABOVE FINISH CEILINGS, INDICATE REINFORCEMENT REQUIREMENTS FOR CONCRETE BLOCK WALLS, ETC.
  - ALL CORRIDOR WALLS ARE TO BE SEALED TO LIMIT THE TRANSFER OF SMOKE (SMOKE RESISTIVE) REGARDLESS OF THE FIRE RATING ASSOCIATED WITH THE WALL.
  - ALL EXPANSION JOINTS THROUGH RATED ASSEMBLIES SHALL HAVE THE SAME FIRE RATING AS THE ASSEMBLY.
  - PROVIDE BLOCKING FOR LOCKERS, CABINETS, AND OTHER EQUIPMENT AS REQUIRED.
  - WINDOWS MARKED WITH A CIRCLE (O) ARE SPANDREL GLASS PANELS WITH CURTAIN WALL INSULATION. SEE ELEVATIONS FOR ADDITIONAL SPANDREL GLASS LOCATIONS.
  - PROVIDE 6" METAL STUDS AT WATER CLOSET NET WALLS, TYPICAL UNLESS NOTED OTHERWISE (U.N.O.).
  - ALL CORRIDOR WALLS AND EQUIPMENT STORAGE ROOMS TO HAVE HEAVY DUTY (HIGH IMPACT RESISTANT) GYPSUM BOARD.
  - SYMBOL INDICATES SPACE OR FEATURE HAS ACCESSIBILITY REQUIREMENTS. SEE ACCESSIBILITY DRAWINGS.
  - THE OWNER SHALL PROVIDE AND THE CONTRACTOR SHALL INSTALL THE FOLLOWING:
    - AT EACH SINK/LAVATORY LOCATION, ONE SOAP DISPENSER U.N.O. VERIFY LOCATIONS WITH OWNER'S REPRESENTATIVE..

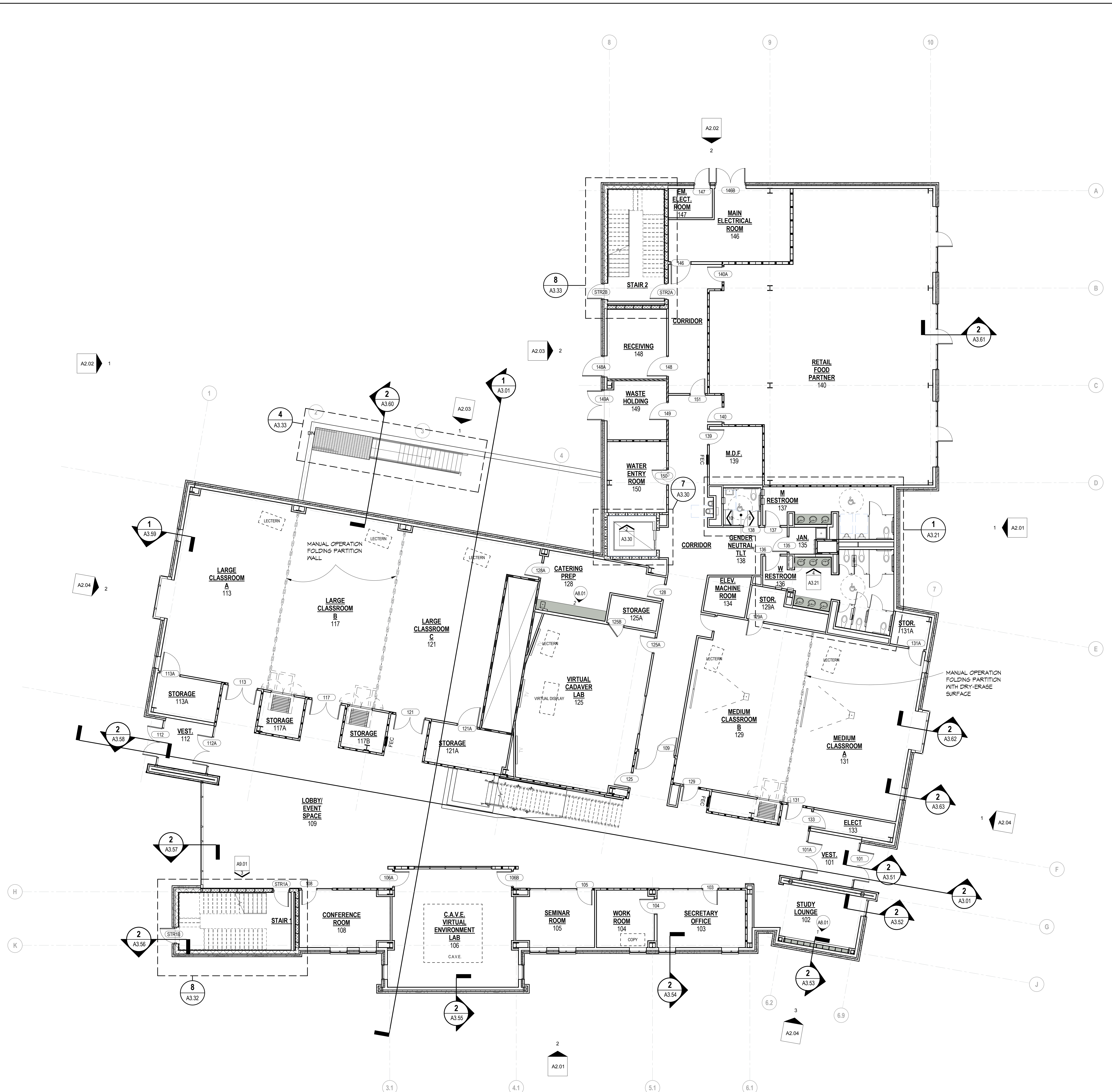
### WALL LEGEND

	NON-RATED PARTITION TO 4' ABOVE CEILING
	NON-RATED PARTITION TO DECK
	SMOKE PARTITION TO DECK
	1-HOUR FIRE BARRIER
	1-HOUR SMOKE BARRIER
	1-HOUR RATED SHAFT WALL BARRIER
	2-HOUR FIRE BARRIER
	2-HOUR SMOKE BARRIER
	2-HOUR RATED SHAFT WALL BARRIER
	NON-RATED C.M.U. PARTITION TO DECK
	1-HOUR C.M.U. FIRE BARRIER TO DECK
	2-HOUR C.M.U. FIRE BARRIER TO DECK
	1-HOUR C.M.U. SMOKE BARRIER TO DECK
	2-HOUR C.M.U. SMOKE BARRIER TO DECK
	CAST-IN-PLACE CONG.
	2-HOUR CONG. FIRE BARRIER
	2-HOUR CONG. SMOKE BARRIER

### SOUND WALL LEGEND

	STC RANGE	DESCRIPTION
	STC 45-49	EQUIVALENT TO NP 1072; 4 1/8" MIN. STEEL STUD WALL SYSTEM
	STC 50-54	EQUIVALENT TO NP 1052; 5 1/2" MIN. STEEL STUD WALL SYSTEM * UNBALANCED
	STC 55-59	EQUIVALENT TO NP 1522; 6 1/8" MIN. STEEL STUD WALL SYSTEM
	STC 65-69	EQUIVALENT TO NP 9060; 10 3/4" MIN. STEEL STUD WALL SYSTEM * DOUBLE STUD
	STC 50-54	EQUIVALENT TO NP 1051; 5 1/4" MIN. STEEL CH-STUD SHAFT WALL SYSTEM
	STC 55	8" MIN. GROUTED CMU WALL SYSTEM

NOTE: VERIFY ALL WALL THICKNESSES, STUD GAUGE, STUD SPACING AND SOUND ATTENUATION BLANKET WITH DOCUMENTS, REFER TO THE GYPSUM ASSOCIATION "FIRE RESISTANCE DESIGN MANUAL" FOR NP ASSEMBLIES.



**1ST FLOOR PLAN NOTED**  
SCALE: 1/8" = 1'-0"

This drawing and the design shown is the property of the architect. The reproduction, copying or use of this drawing without their written consent is prohibited and any infringement will be subject to legal action.  
© Earl Swenson Associates, Inc. 2014

Seals

DESIGN DEVELOPMENT

PRELIMINARY  
NOT FOR CONSTRUCTION

MORAVIAN COLLEGE  
CENTER FOR HEALTH SCIENCES  
BETHLEHEM, PENNSYLVANIA



### DOCUMENT CHANGES

Description	Date

Issue Description: DESIGN DEVELOPMENT  
Original Issue Date: 11.27.15  
Project No: 15057.01  
Drawn By: BCM | Checked By: JF  
Drawing Title:

FIRST FLOOR PLAN -  
NOTED