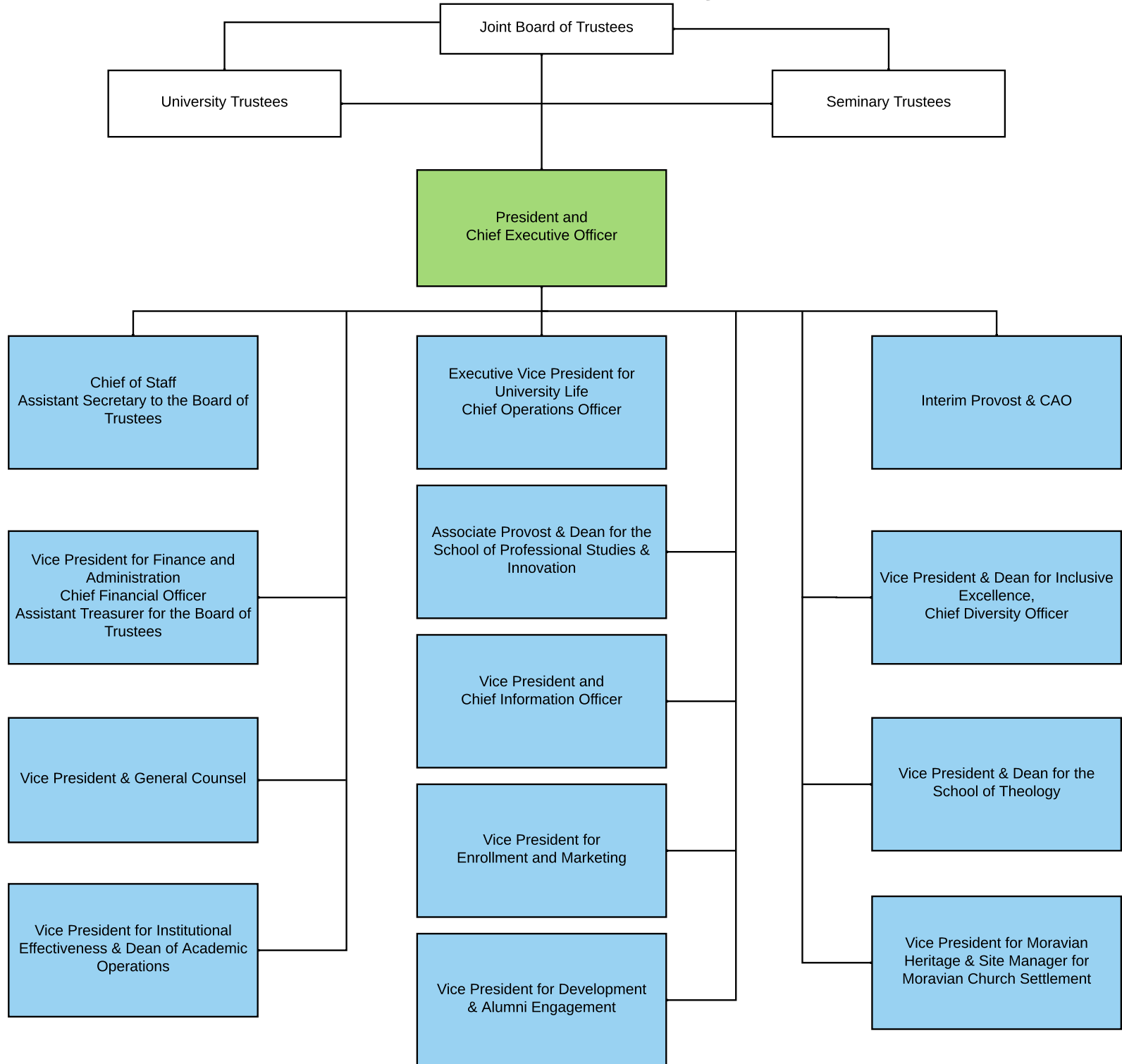
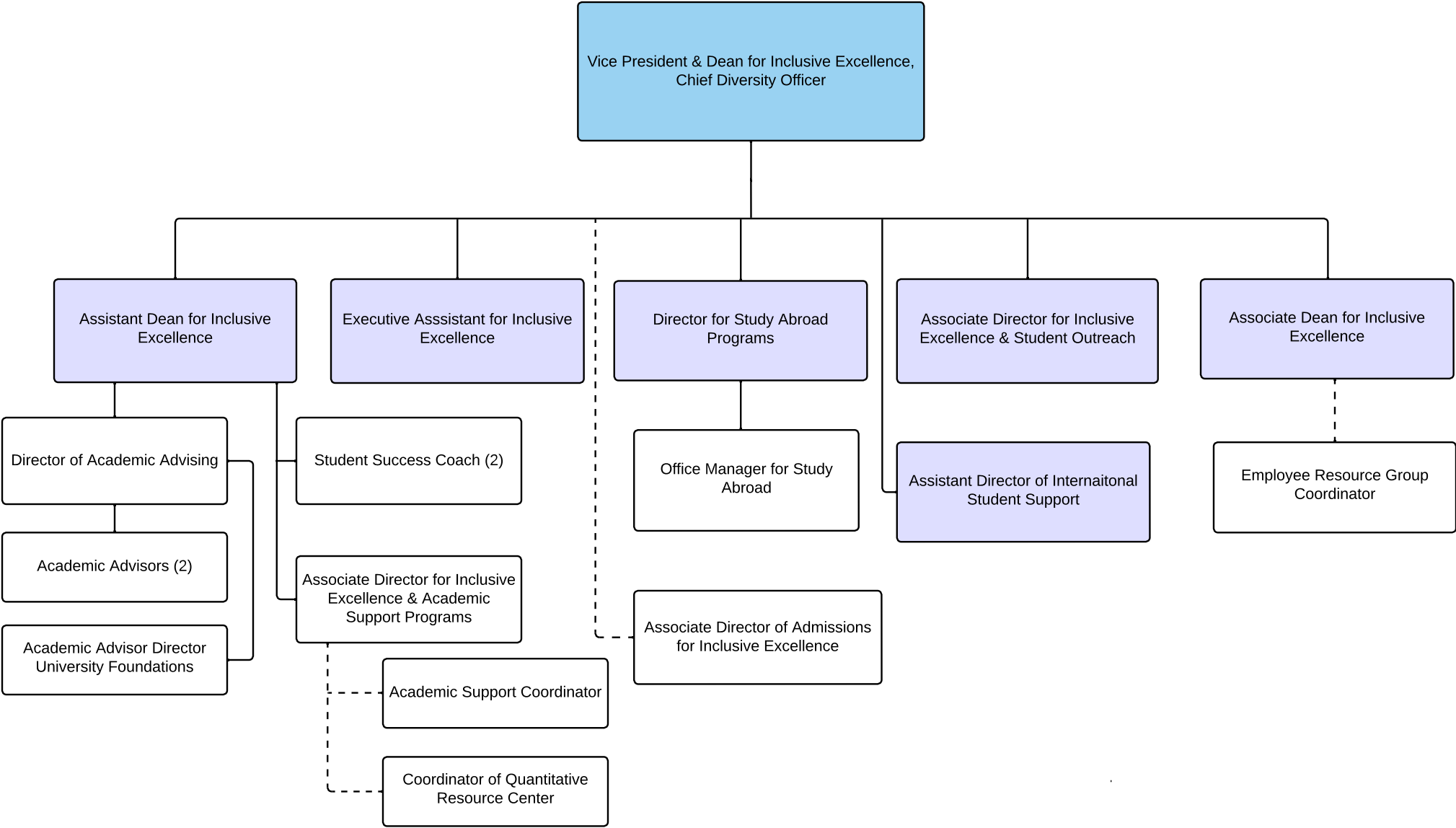


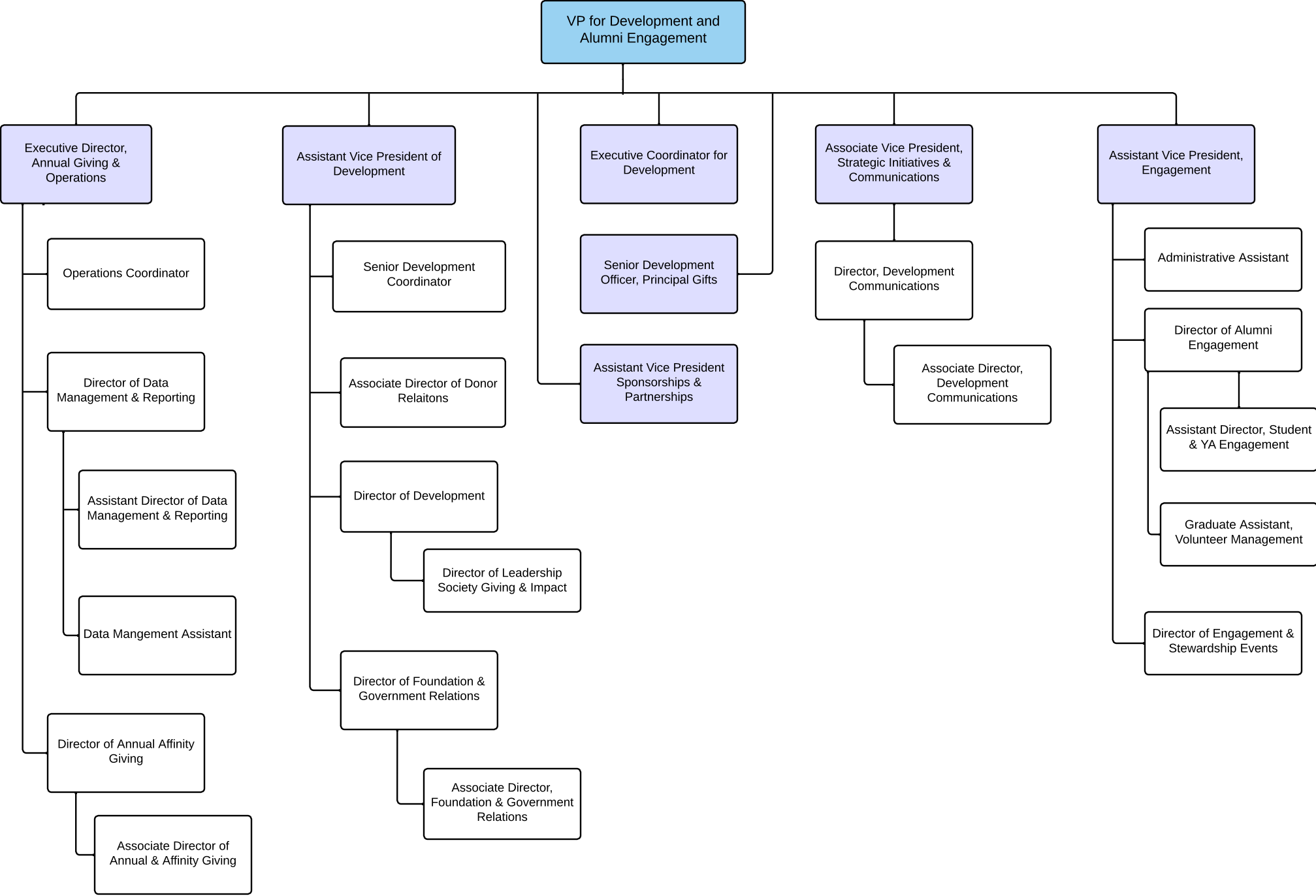
# 2025-2026 Moravian University



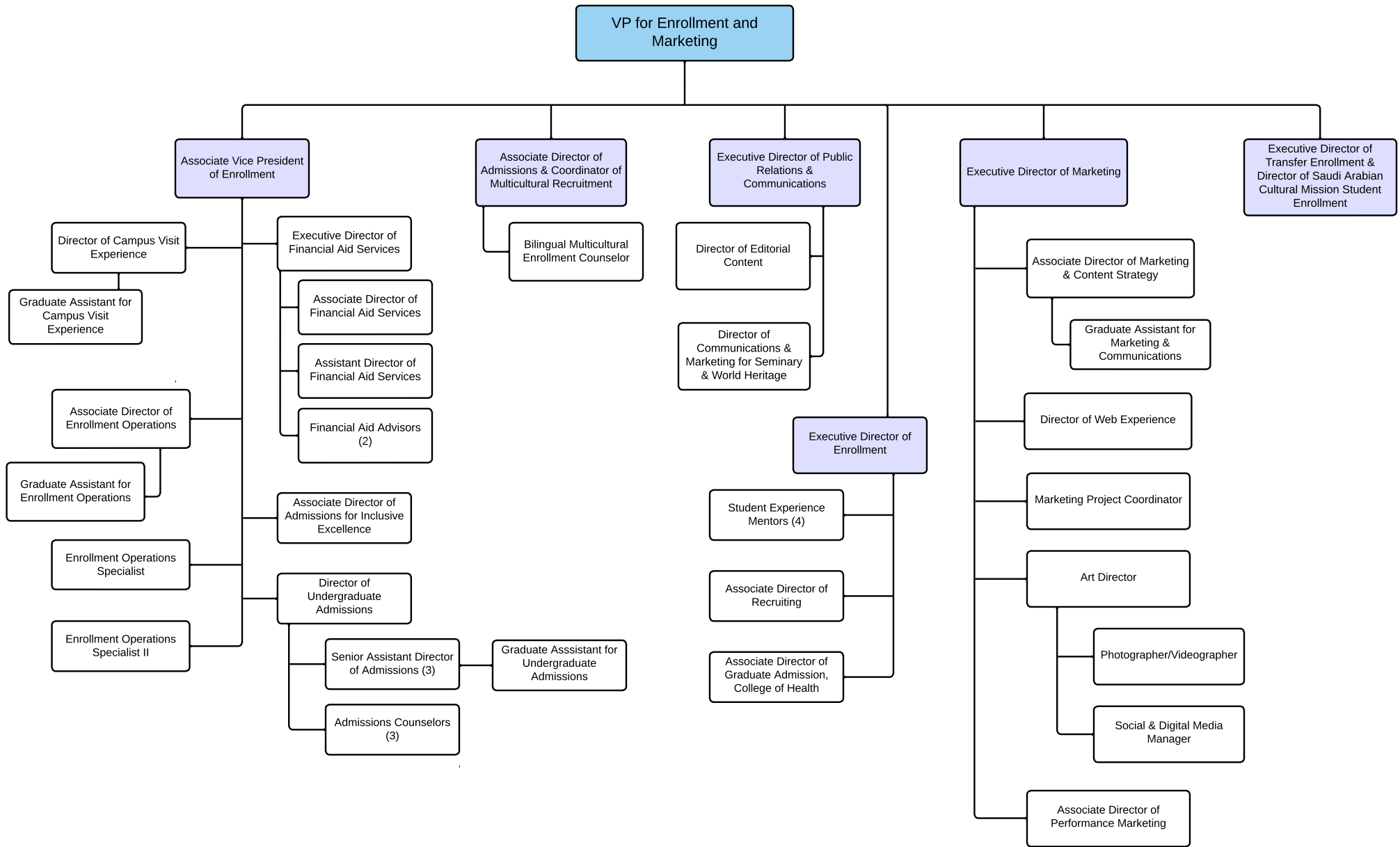
# Center for Inclusive Excellence



Development and Alumni Engagement

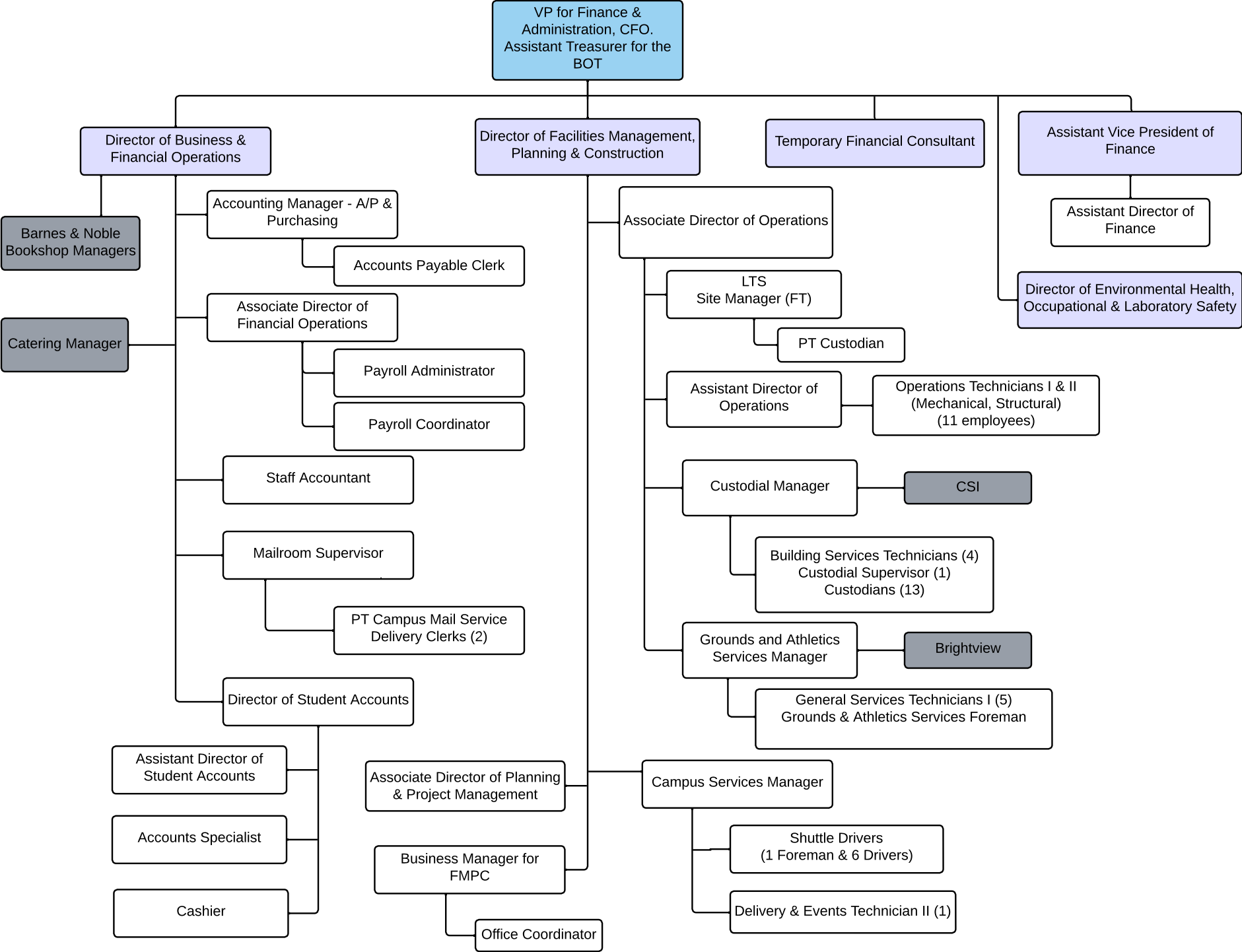


# Enrollment & Marketing



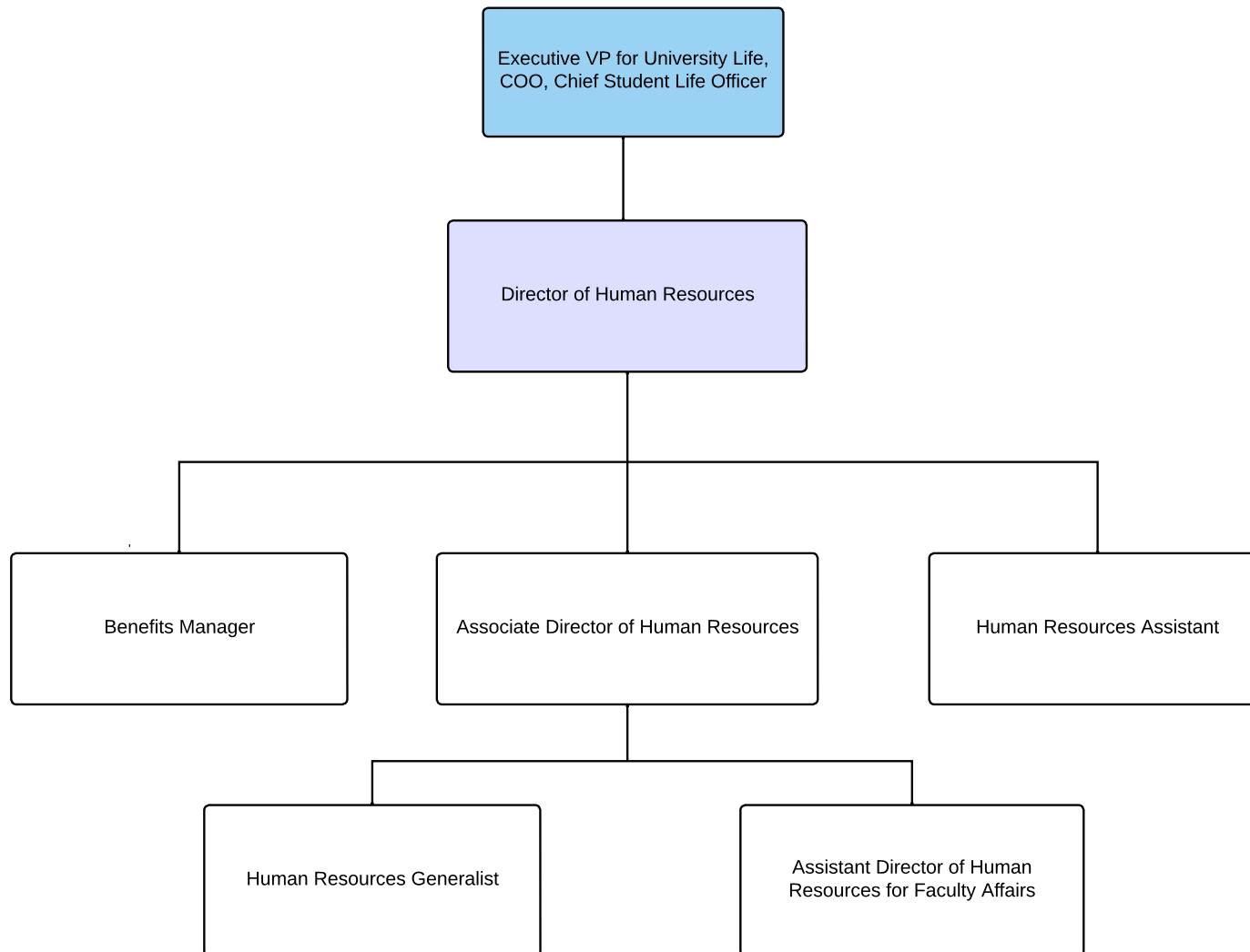
Subcontractor

Finance & Administration

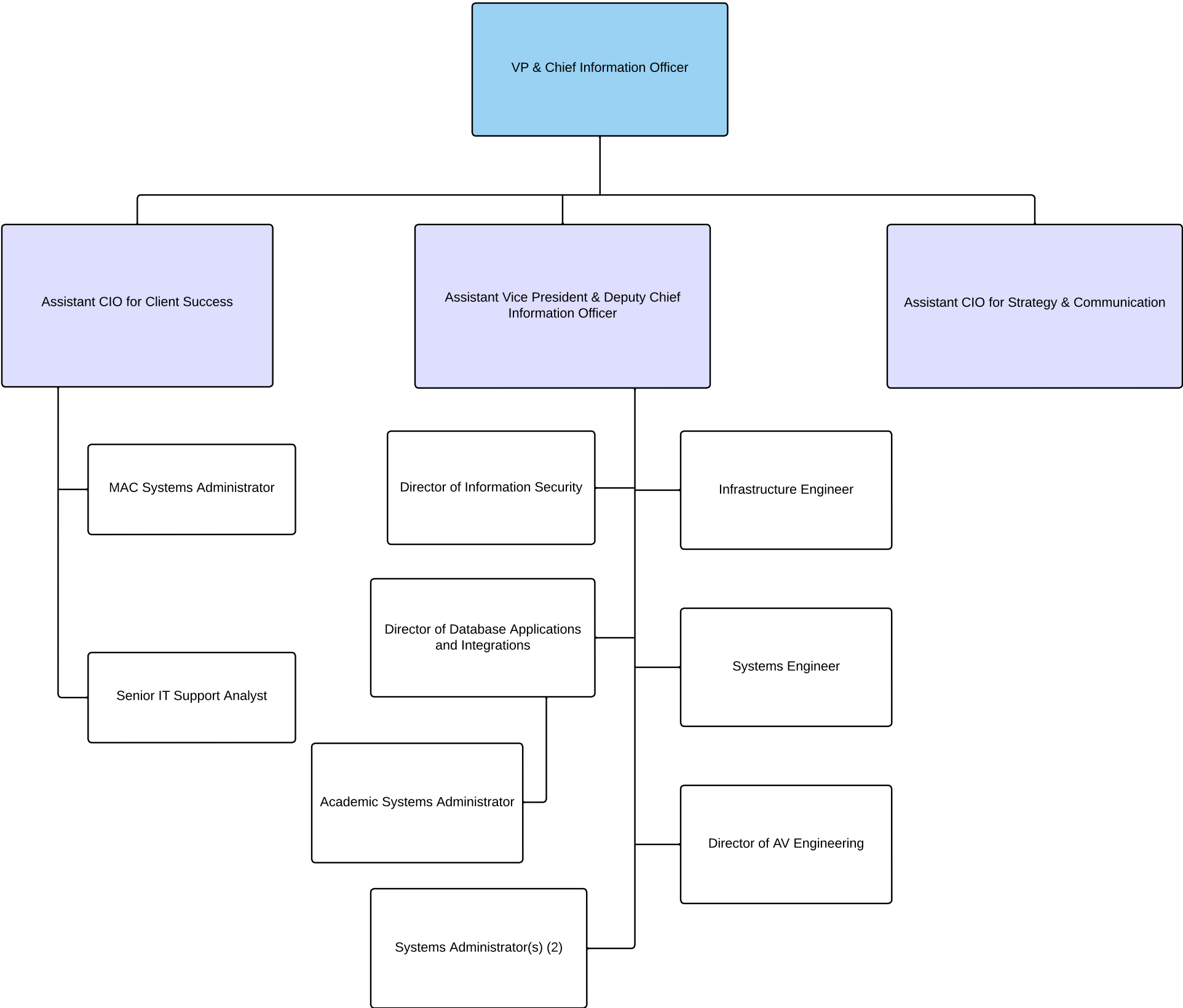


## Human Resources

---

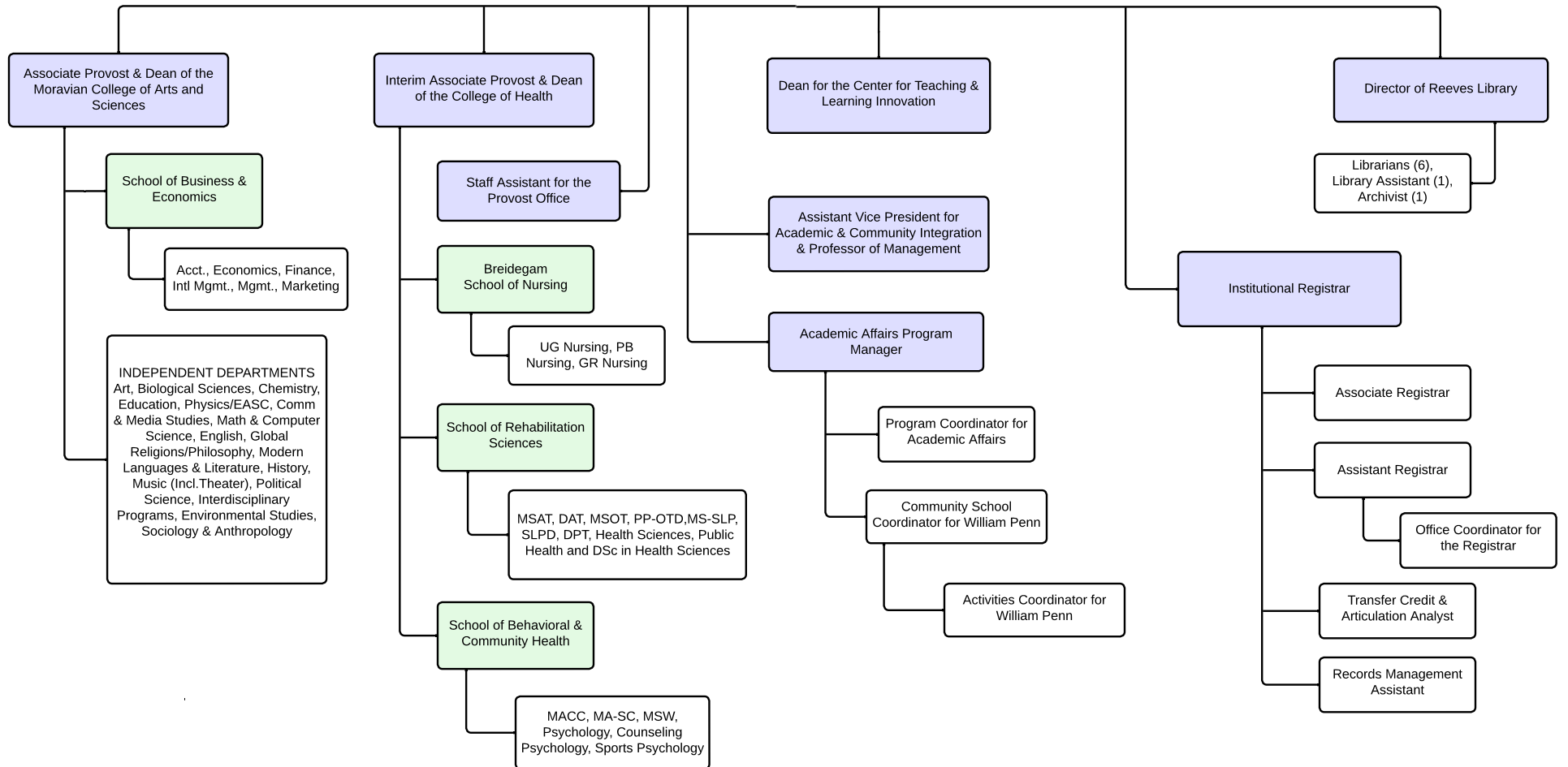


Information Technology



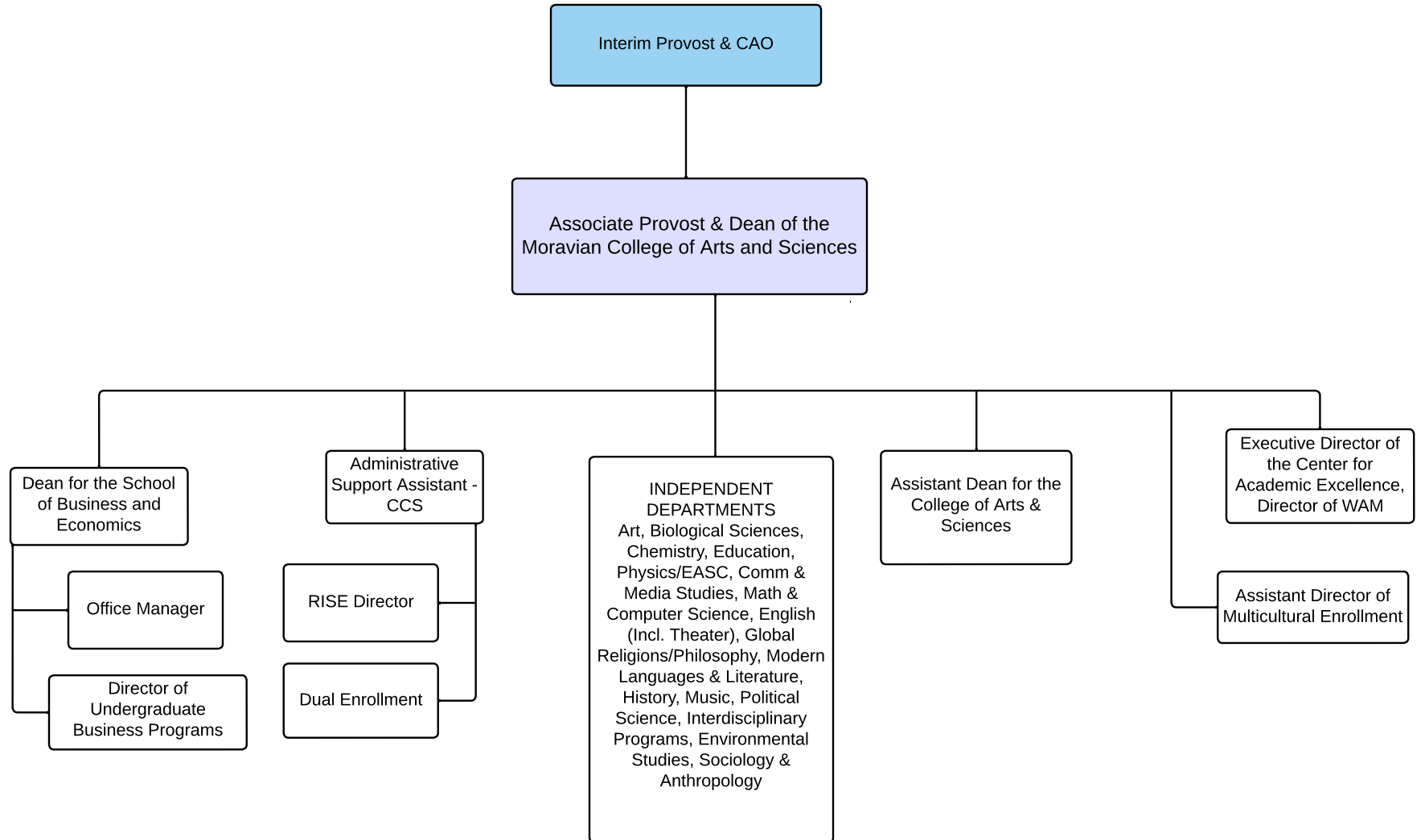
# Provost Office

Interim Provost & CAO





# College of Arts and Sciences



## College of Health

---

Interim Provost & CAO

Associate Provost & Dean of the  
College of Health

Dean for the School of Behavioral  
& Community Health & Professor  
of Clinical Counseling

Simulation Lab Educator

Interim Associate Dean  
Rehabilitation Sciences/Associate  
Professor

Associate Dean of the Helen  
Breidegam School of Nursing and  
Public Health/Associate  
Professor

Administrative Specialist

Staff Assistant for the Provost's  
Office

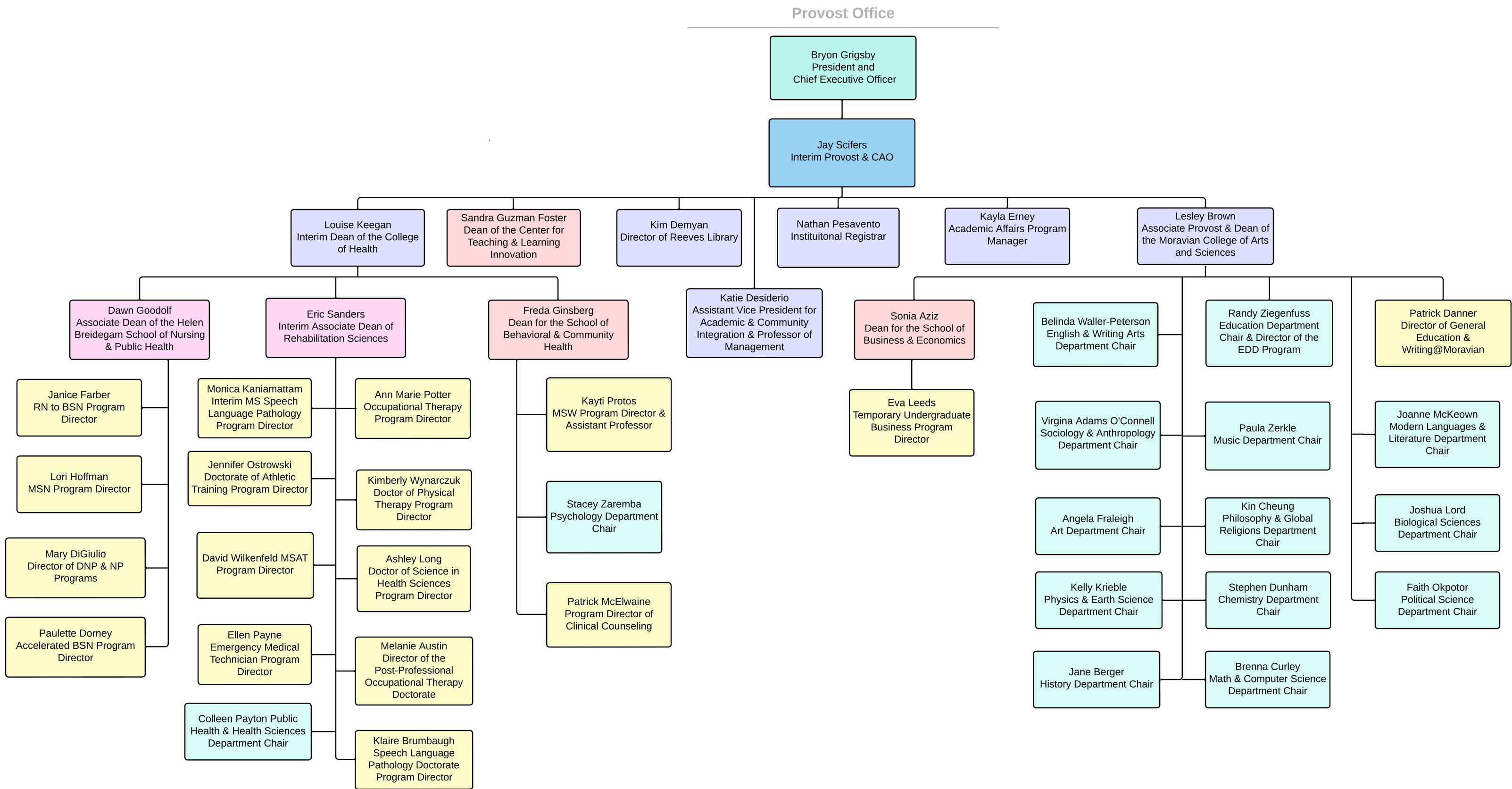
Office Manager (2)

Office Manager

Faculty for MACC,  
MA-SC, MSW,  
Psychology, Counseling  
Psychology, Sports  
Psychology

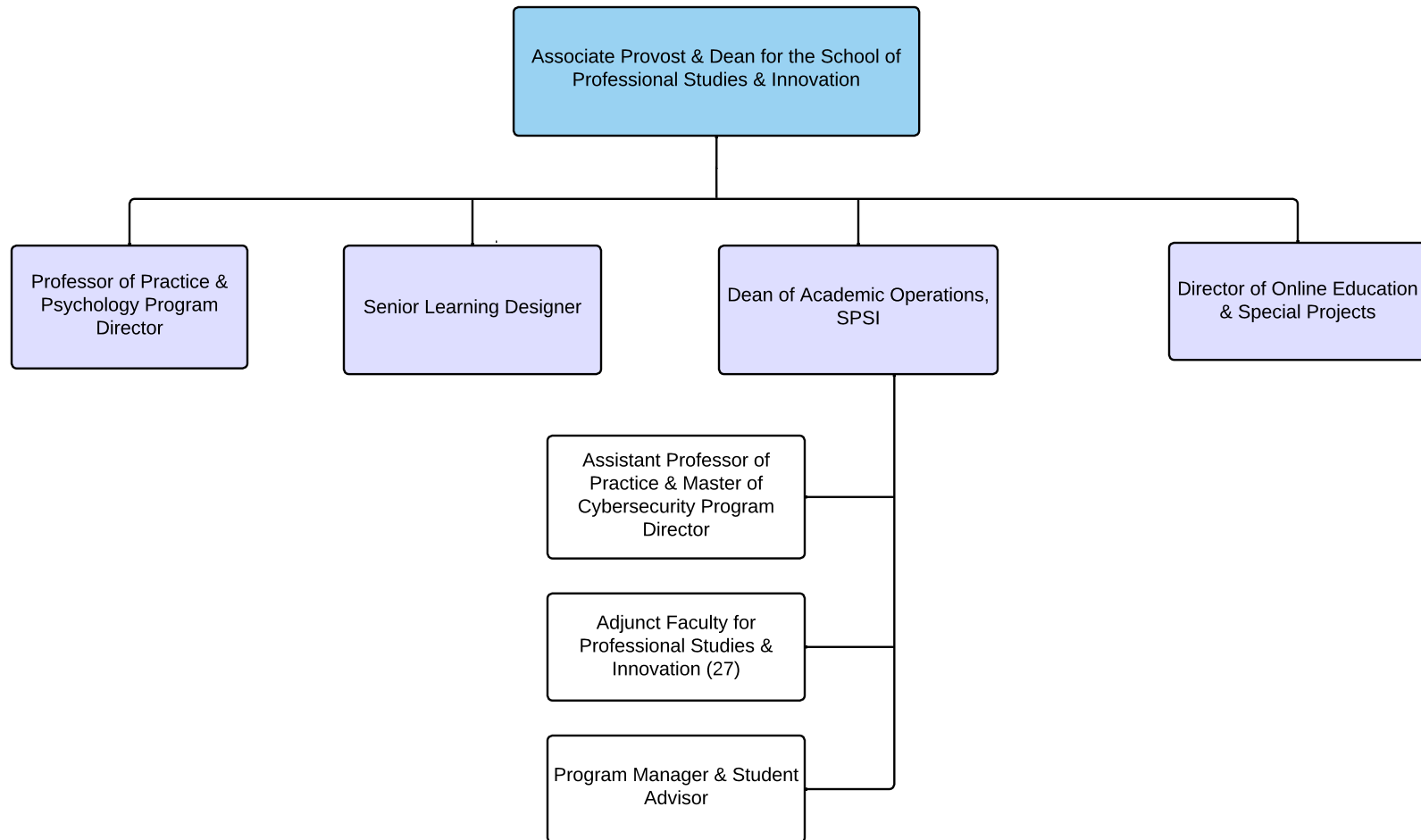
Faculty for MSAT, DAT, MSOT,  
PP-OTD, MS-SLP, SLPD, DPT,  
Health Sciences, Public Health and  
DSc in Health Sciences

Faculty for UG  
Nursing, PB Nursing,  
GR Nursing

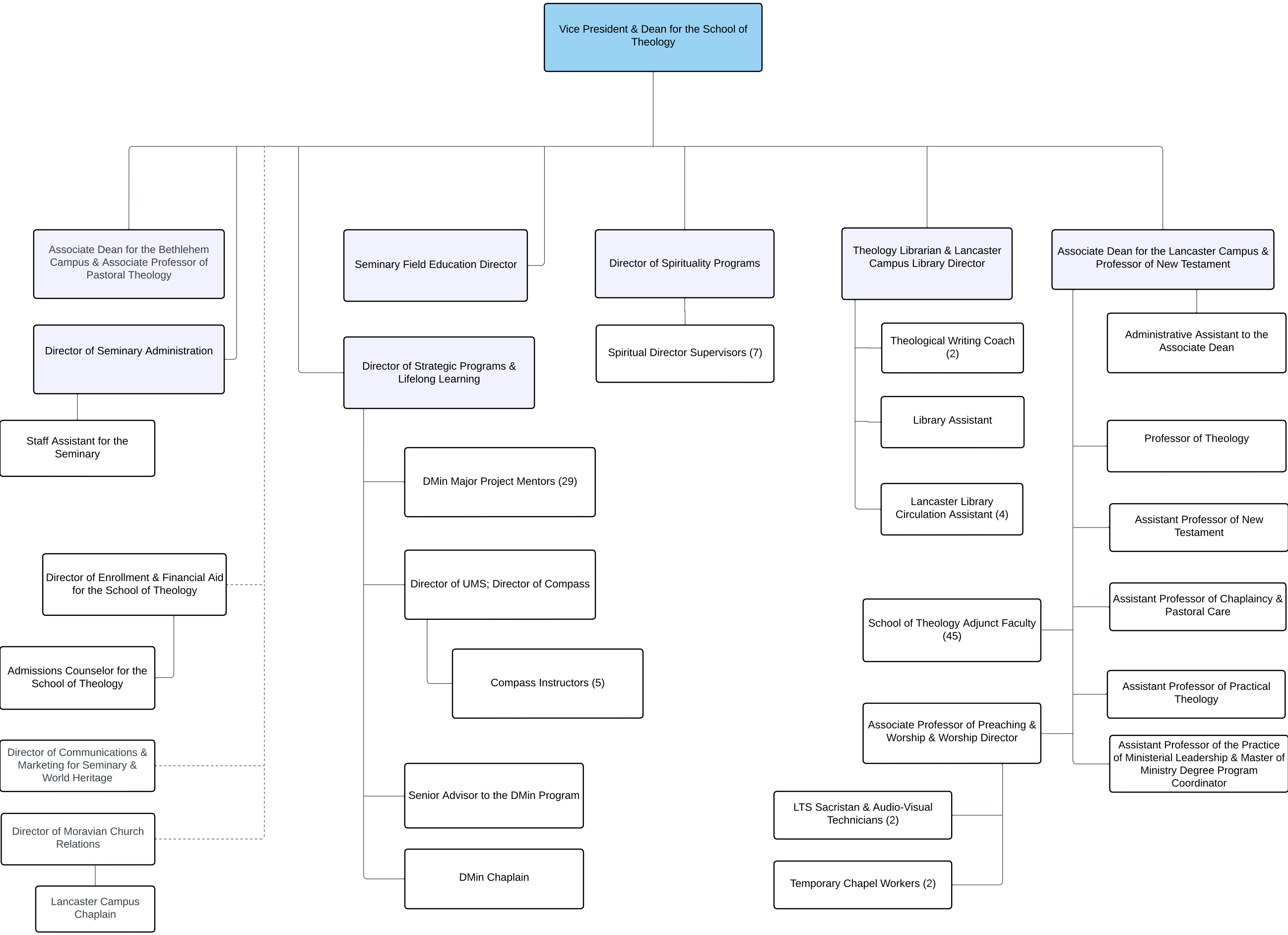


## School of Professional Studies and Innovation

---



School of Theology  
Bethlehem/Lancaster Campuses



# Student Life

