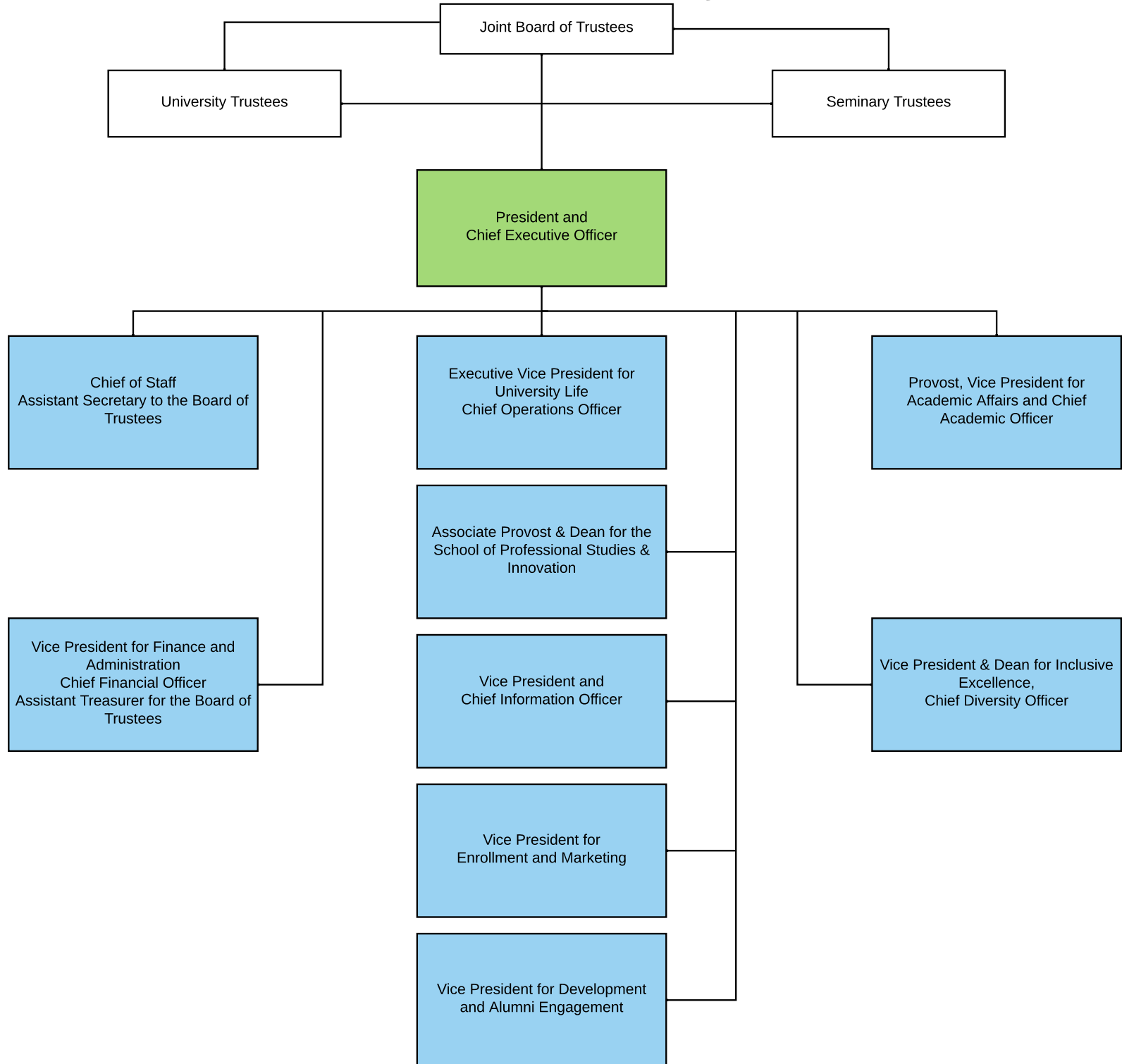
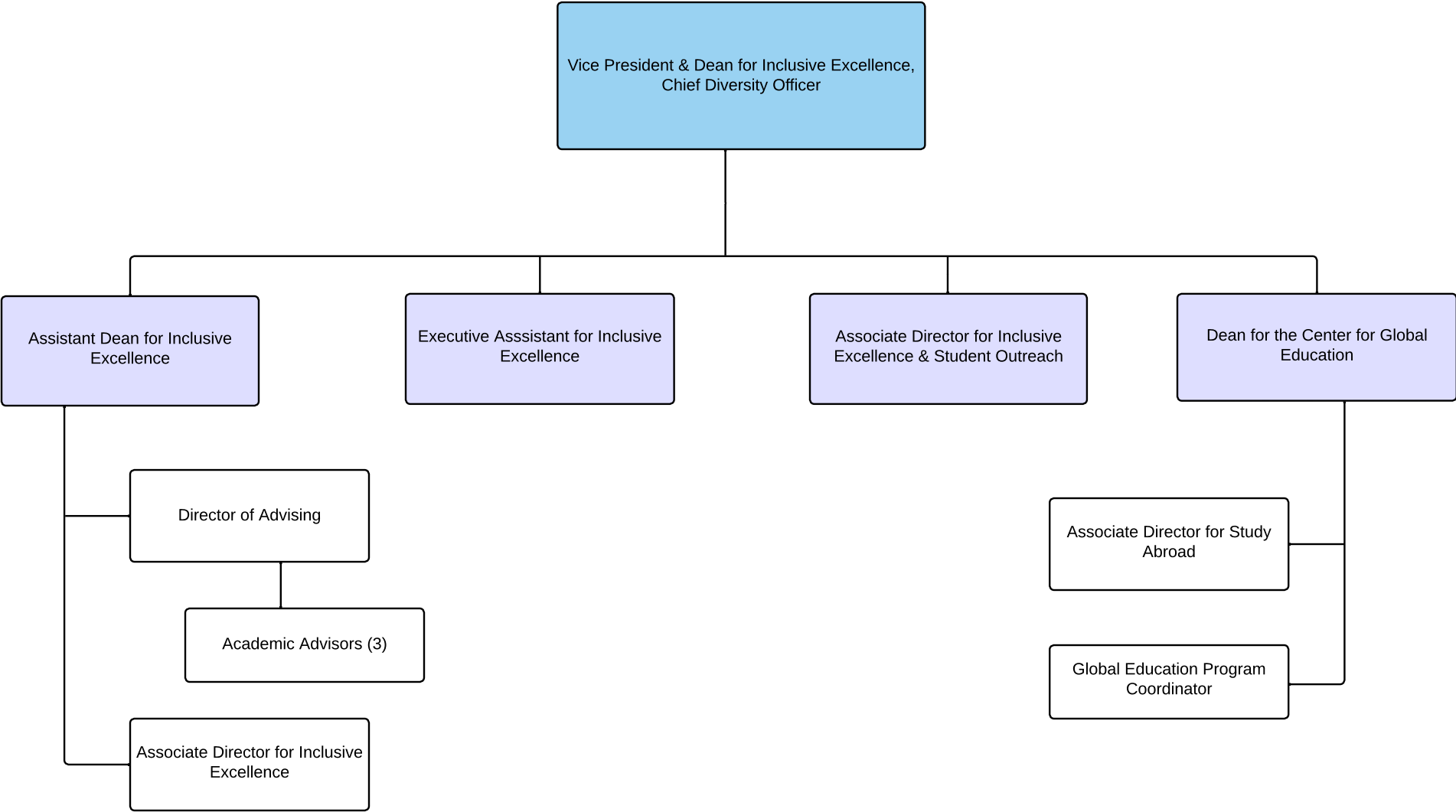


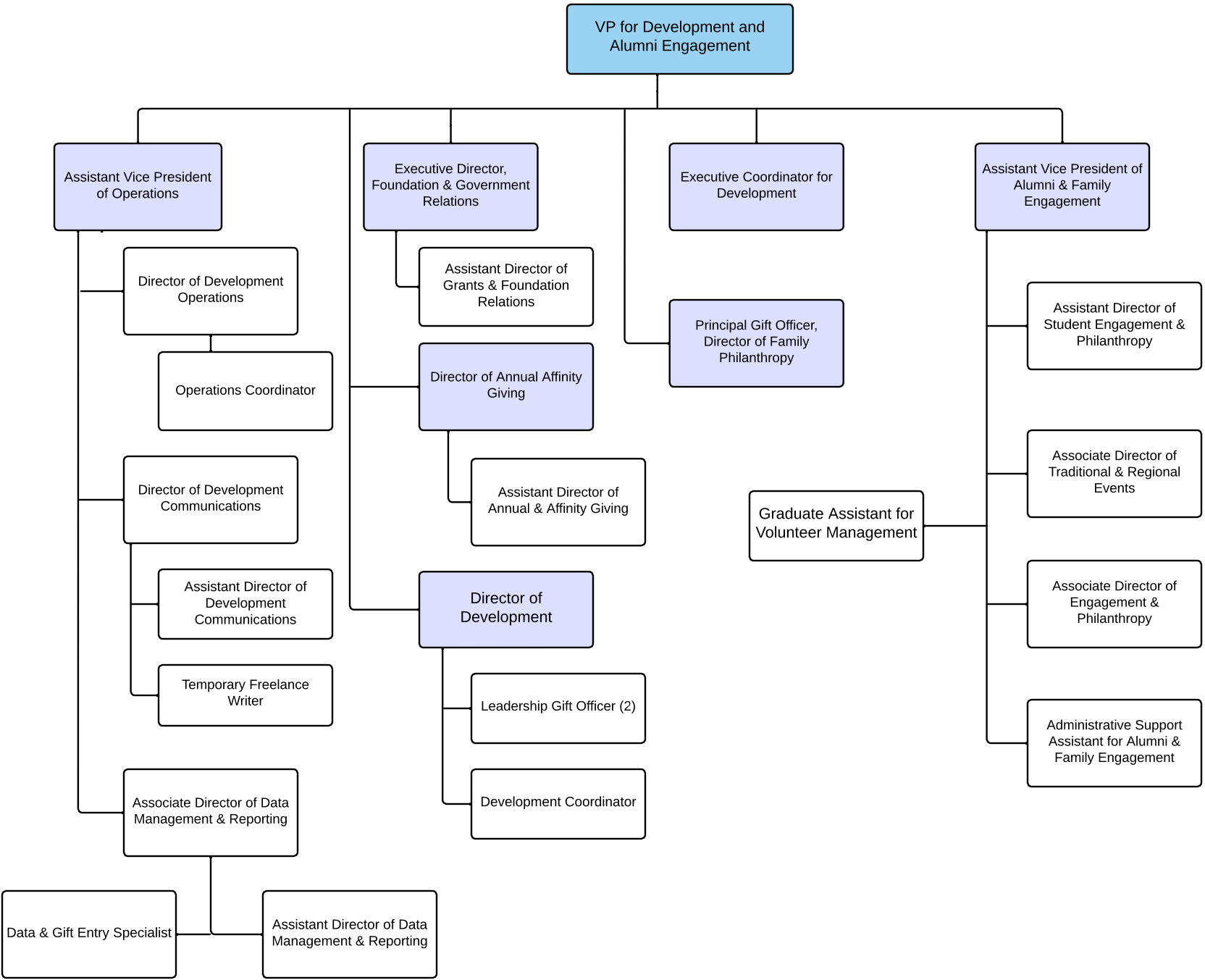
2024-2025 Moravian University



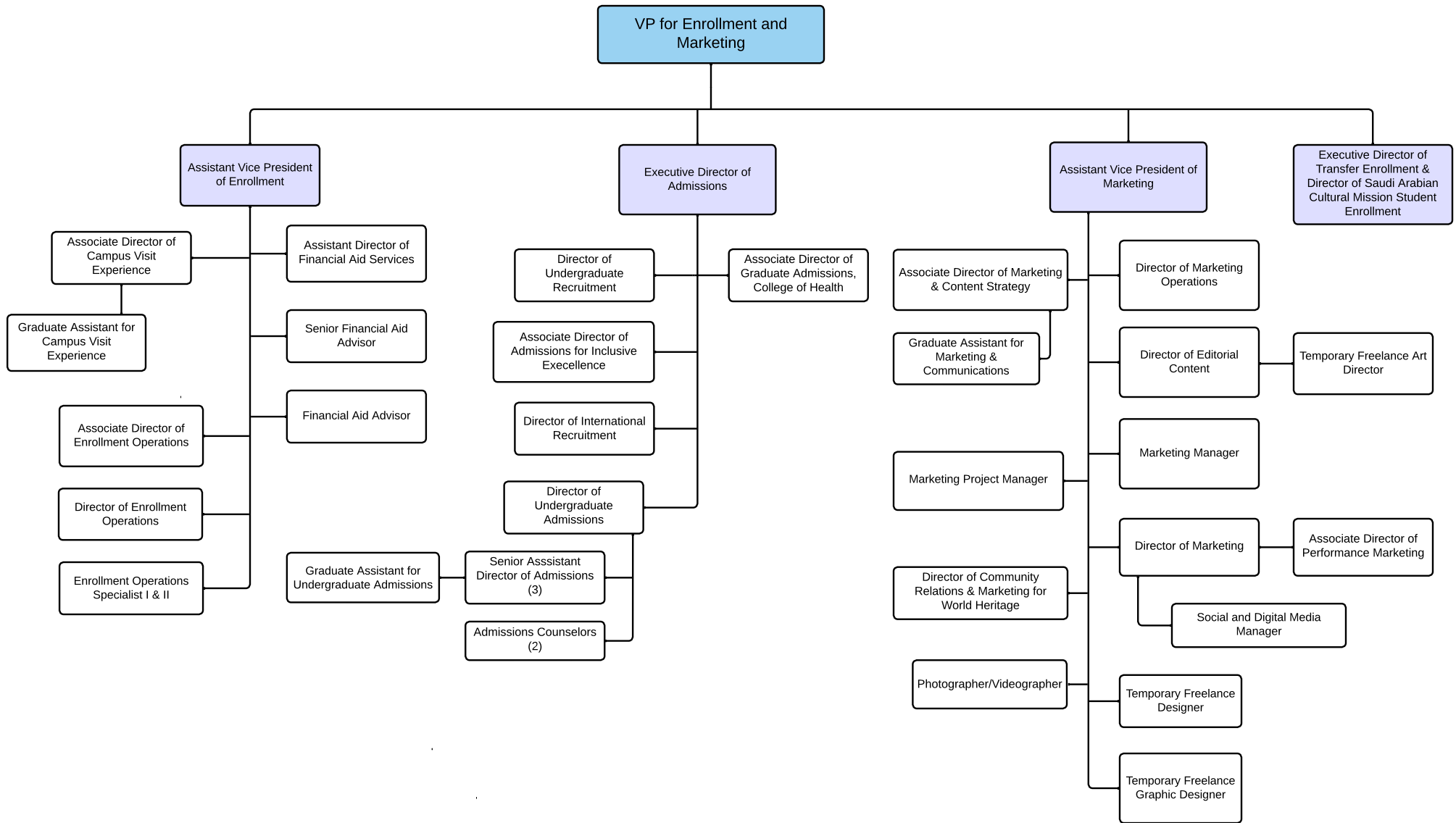
Center for Inclusive Excellence



Development and Alumni Engagement

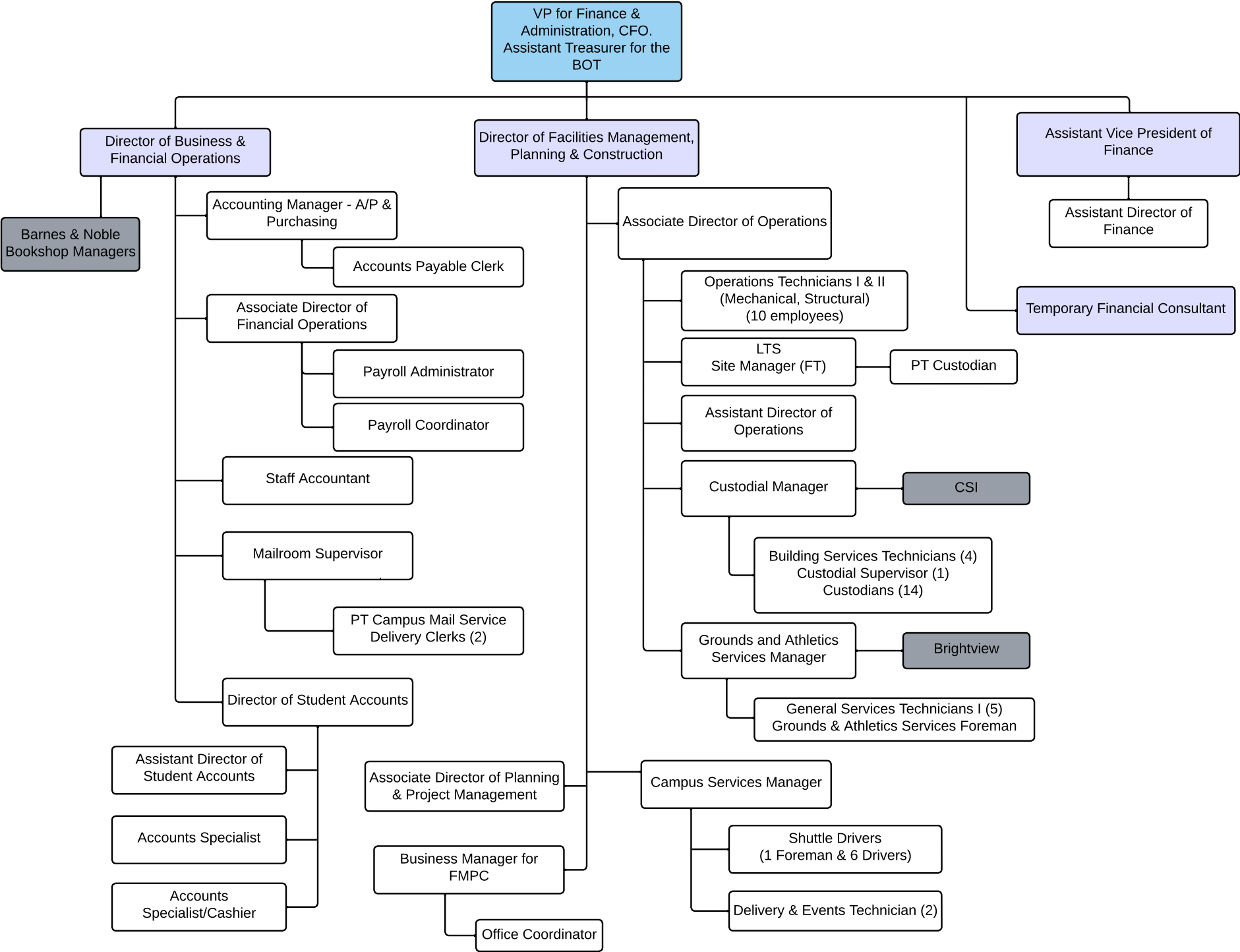


Enrollment & Marketing

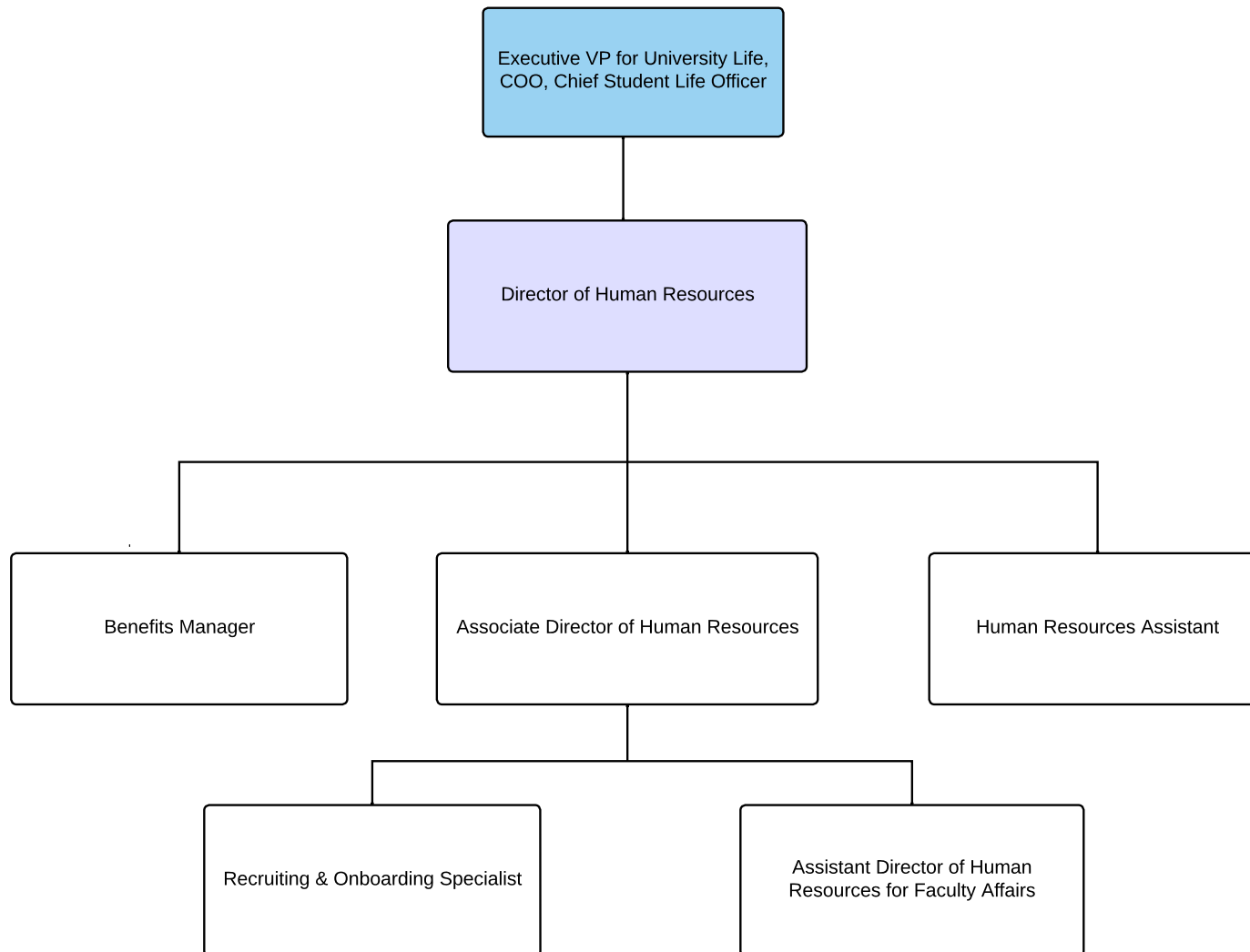


Subcontractor

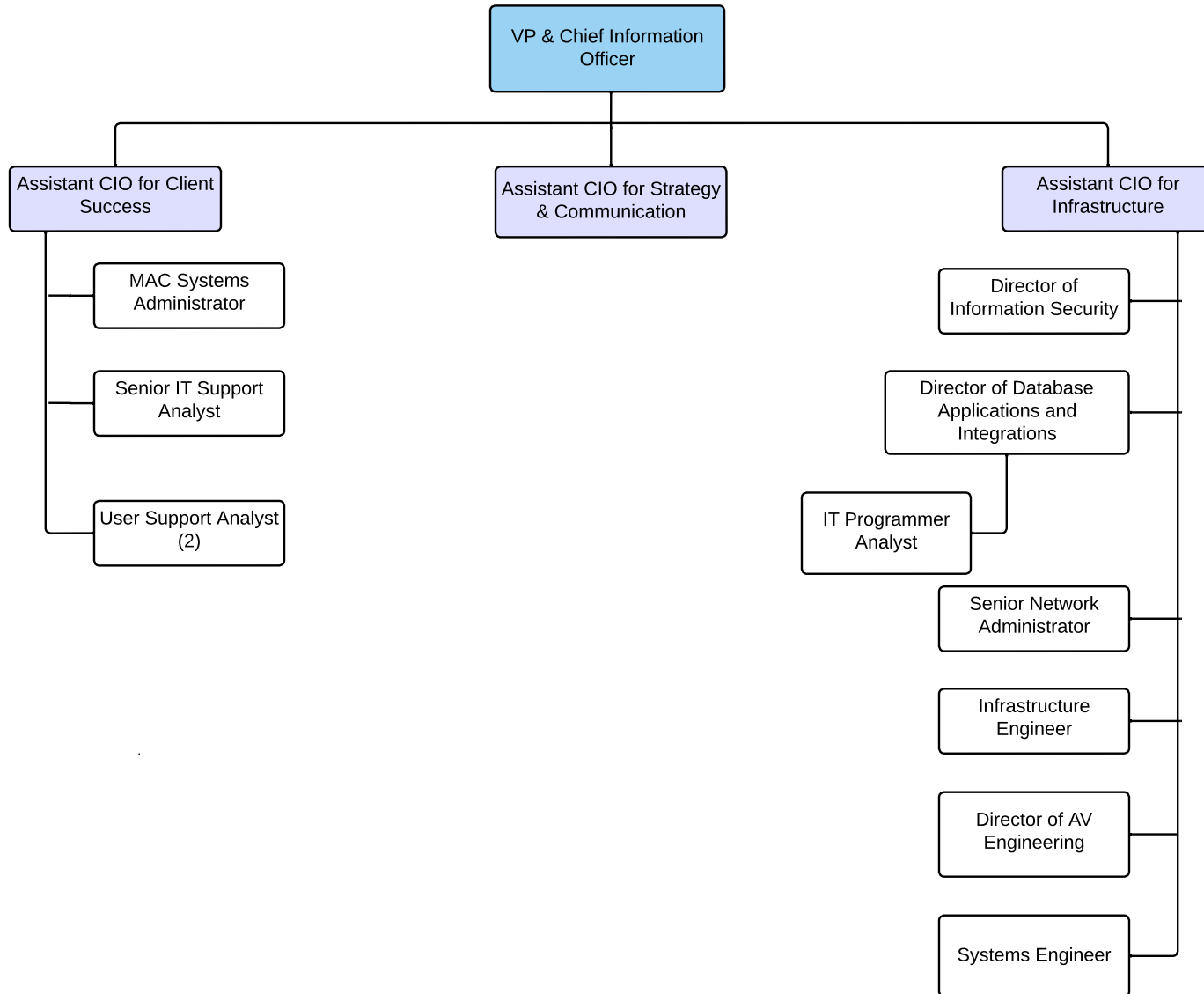
Finance & Administration



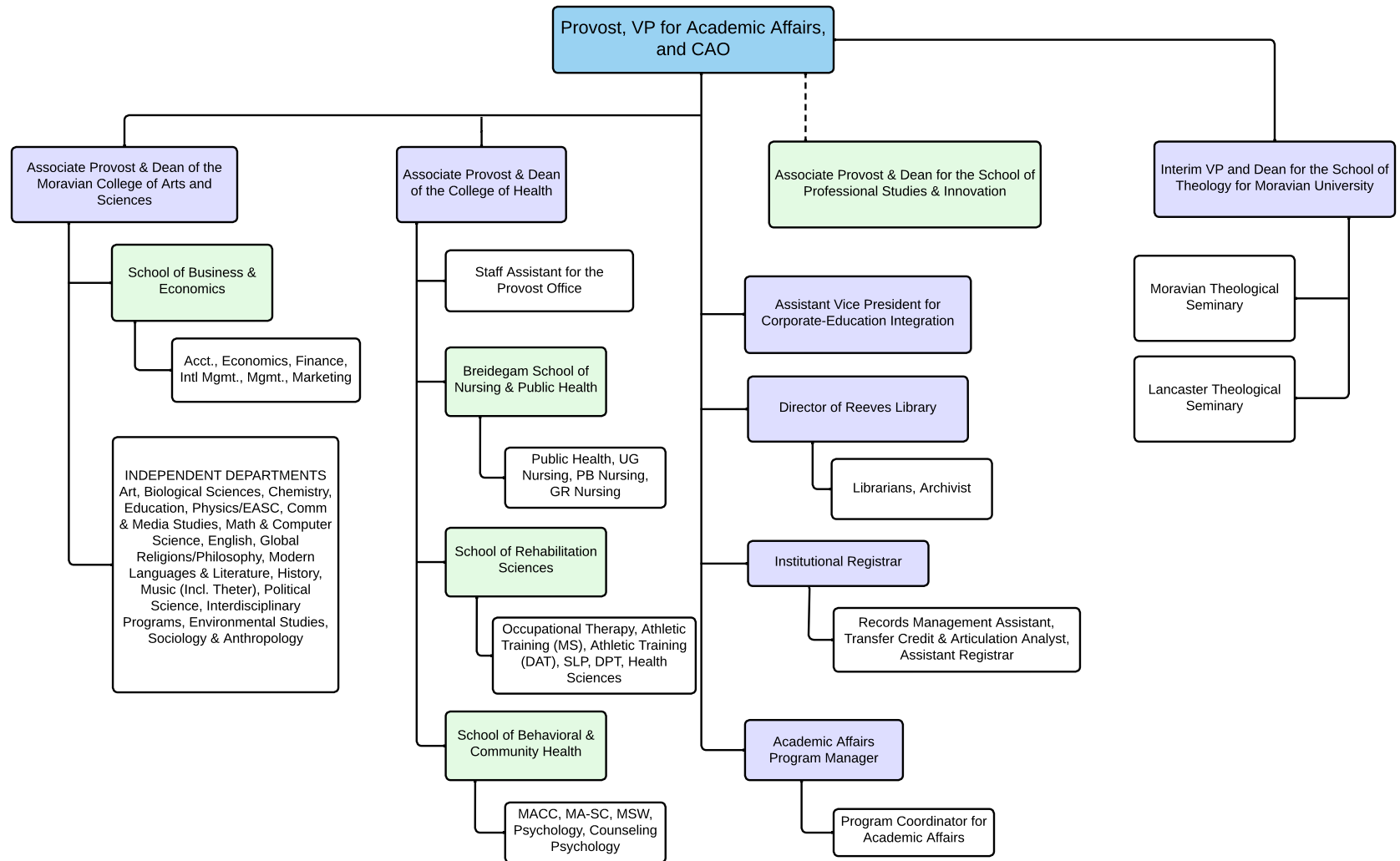
Human Resources



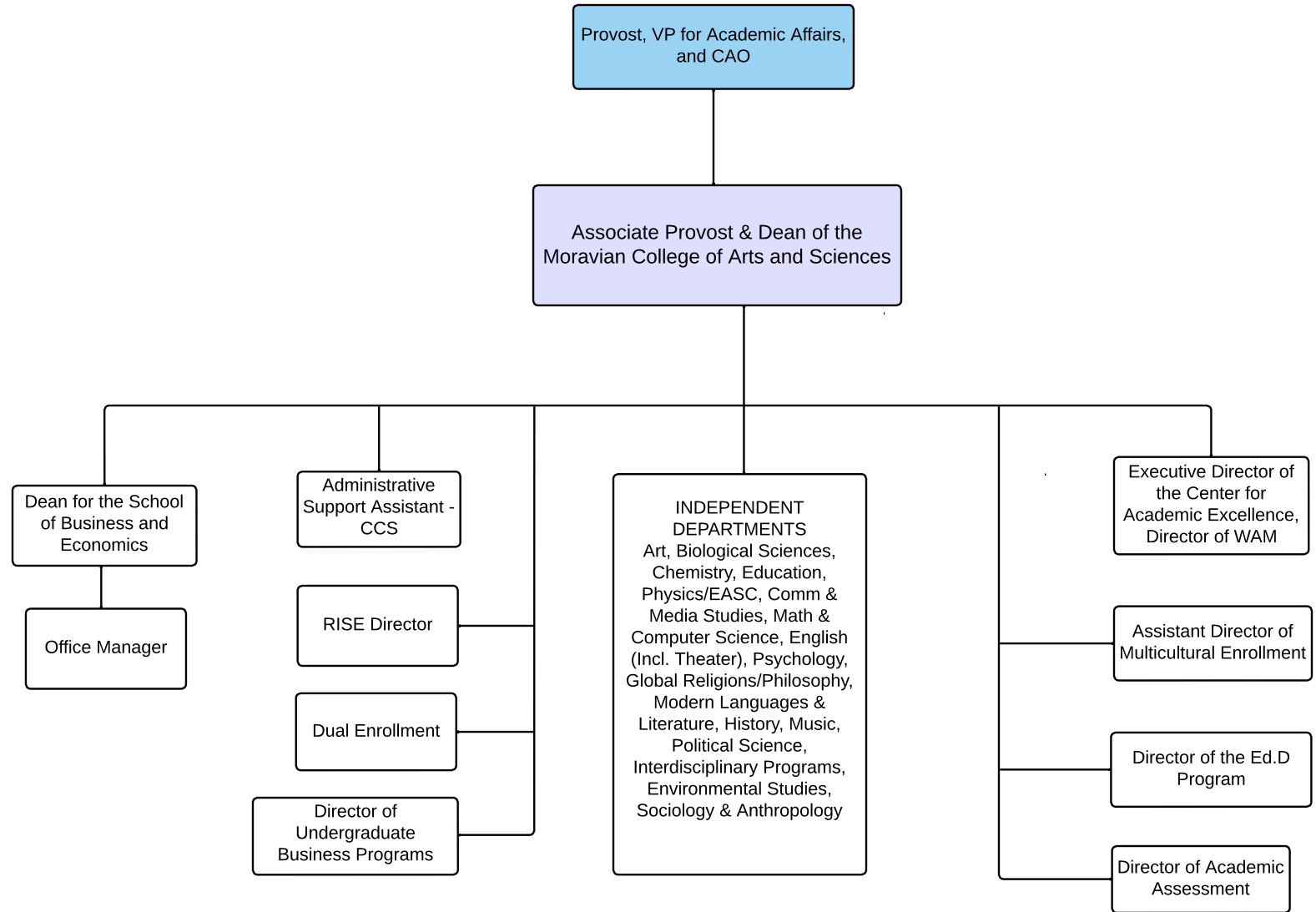
Information Technology



Provost Office



College of Arts and Sciences



College of Health

Provost, VP for Academic Affairs,
and CAO

Associate Provost & Dean of the
College of Health

Dean for the School of Behavioral
& Community Health & Professor
of Clinical Counseling

Administrative Specialist

Assistant Professor of
Occupational Therapy

Associate Dean Rehabilitation
Sciences/Associate Professor

Office Manager (2)

Staff Assistant for the Provost's
Office

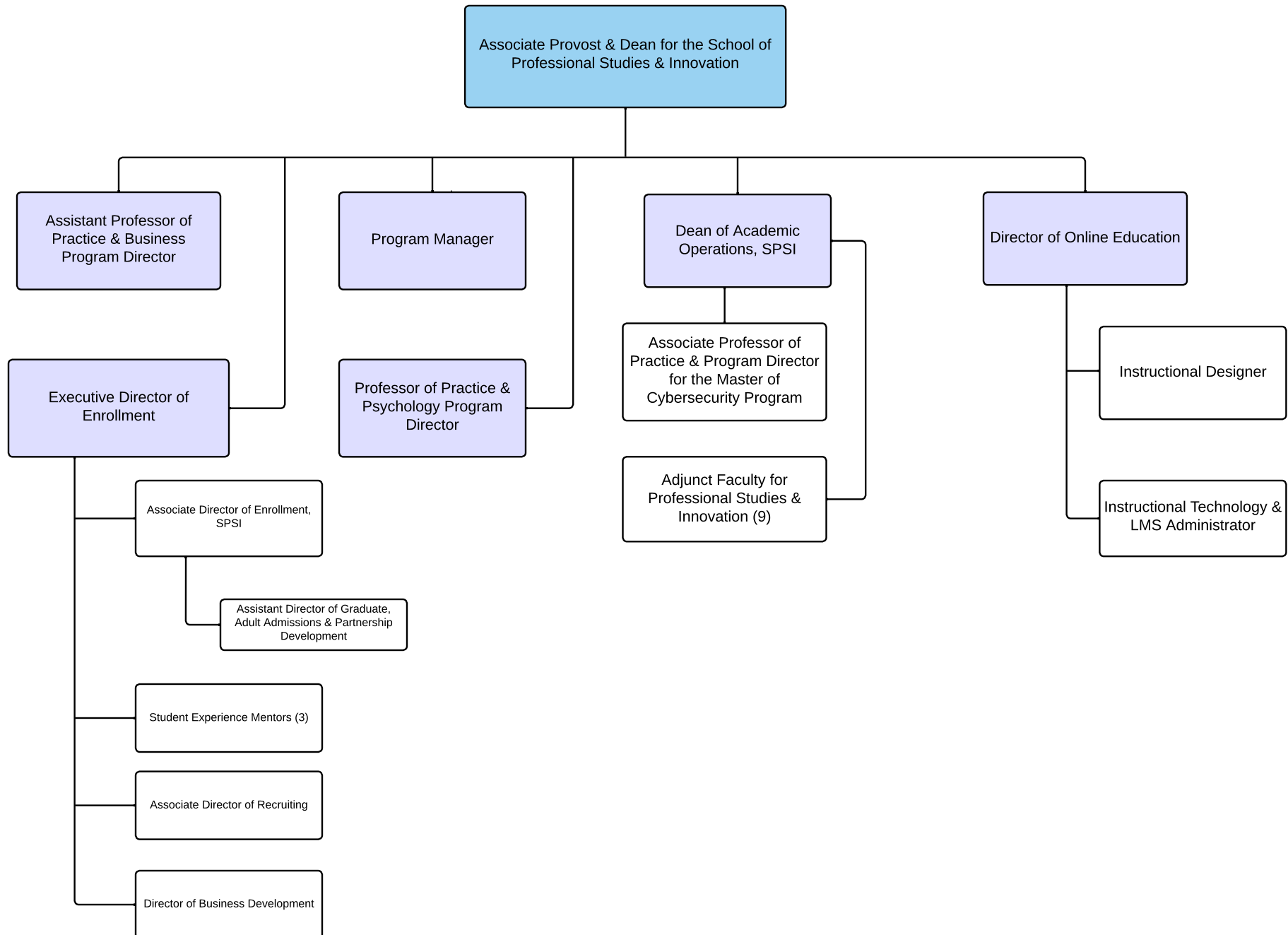
Associate Dean of the Helen
Breidegam School of Nursing and
Public Health/Associate
Professor

Simulation Lab
Educator

Clinical
Coordinator

Office Manager

School of Professional Studies and Innovation



Moravian Theological Seminary
Lancaster Theological Seminary

