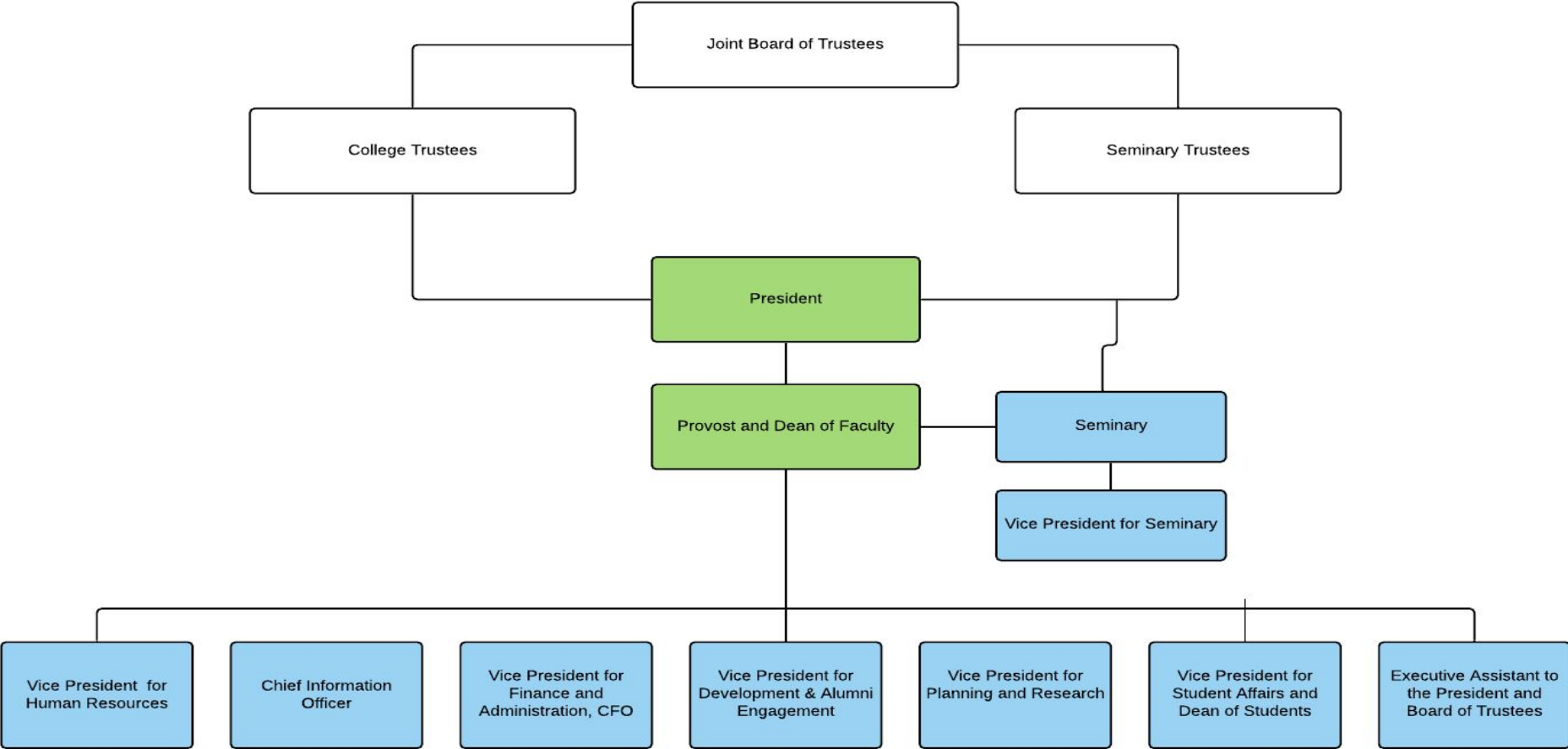
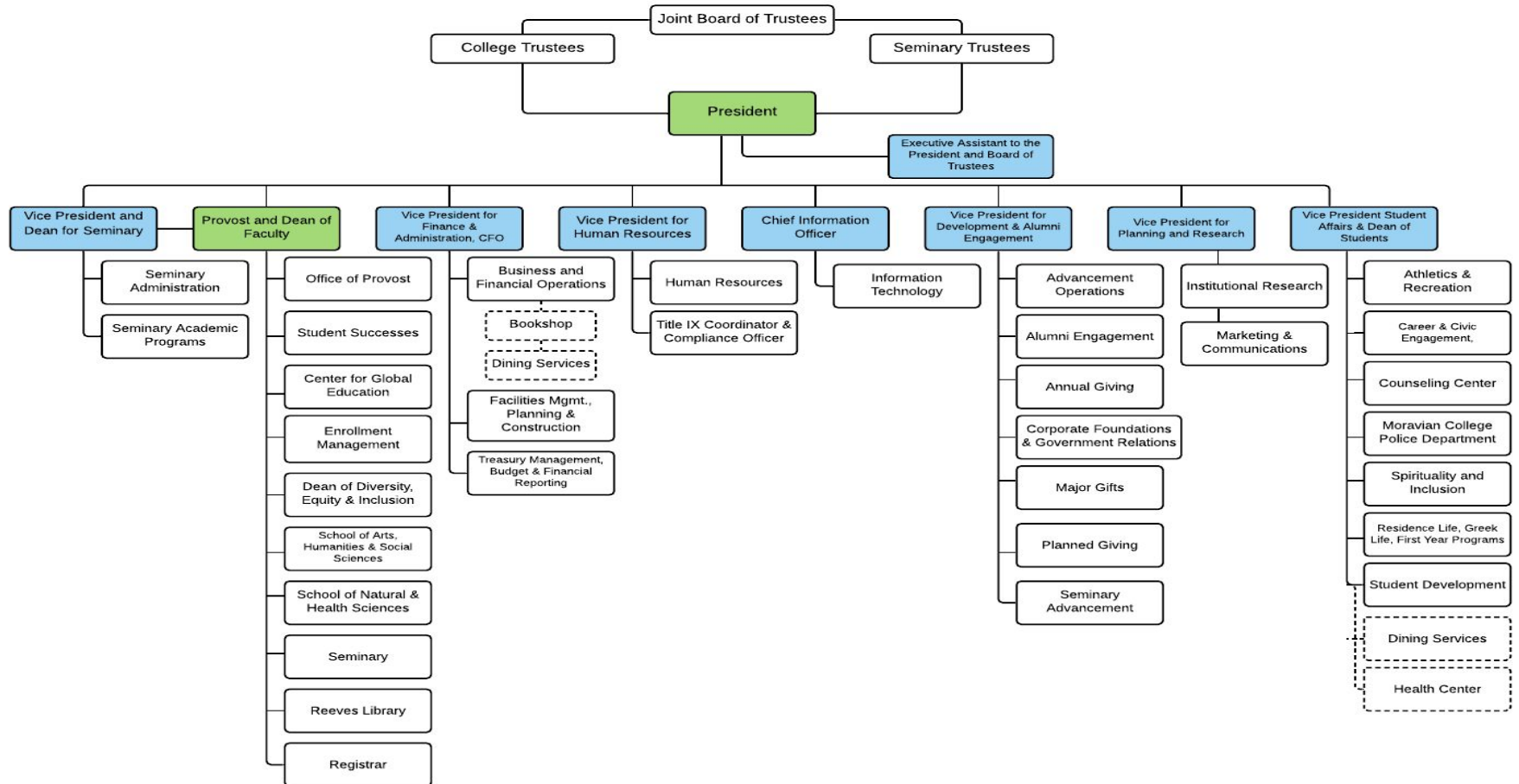


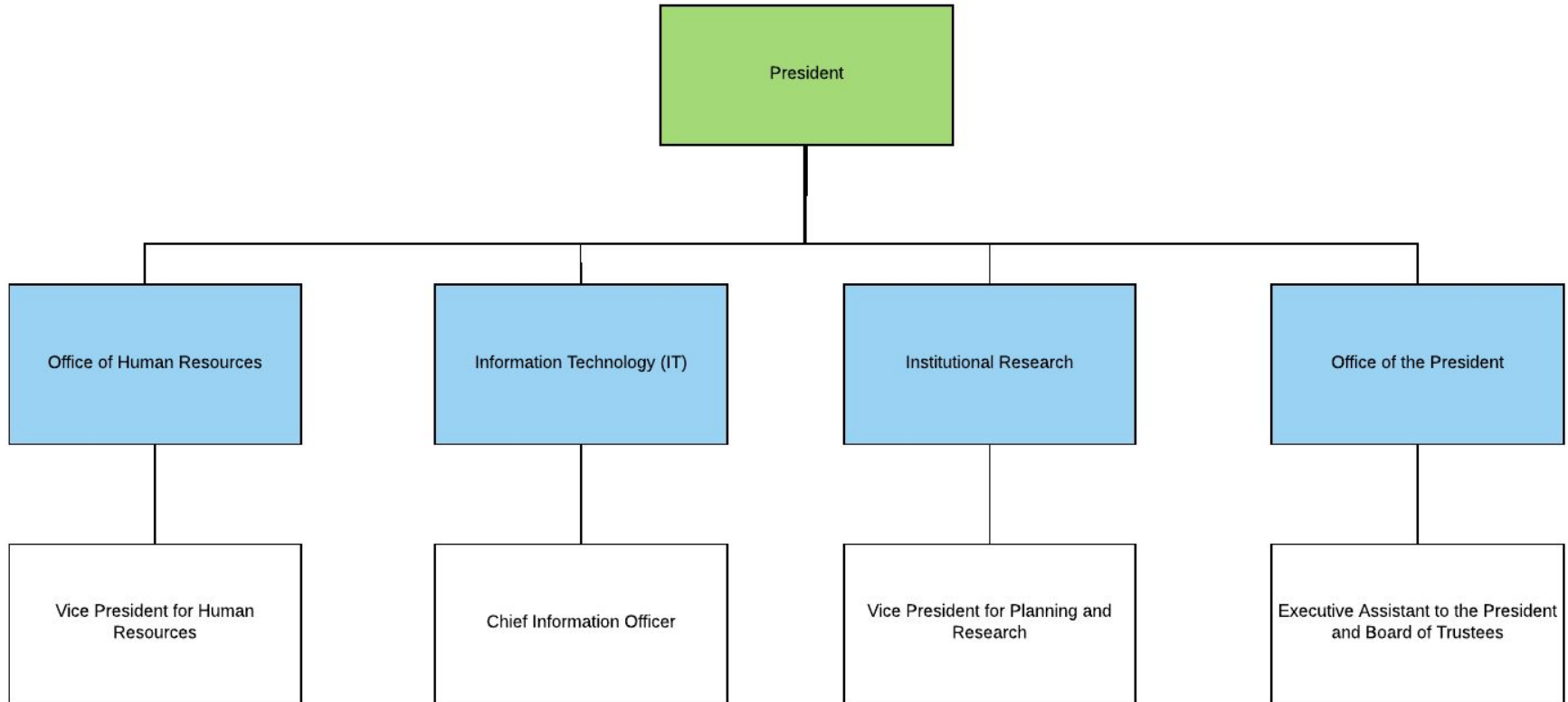
Administrative Organization of the College



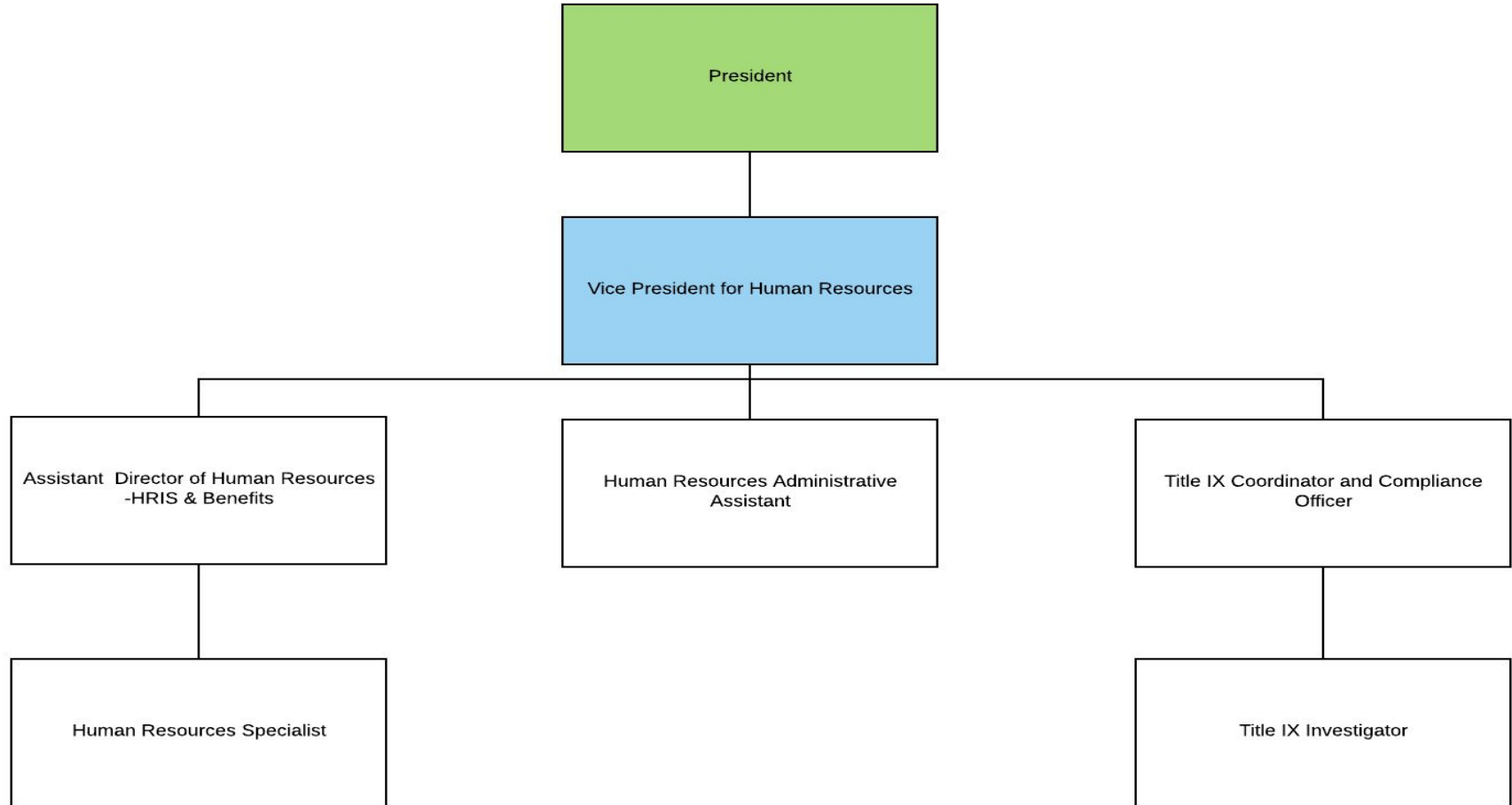
# Administrative Organization of the College Expanded



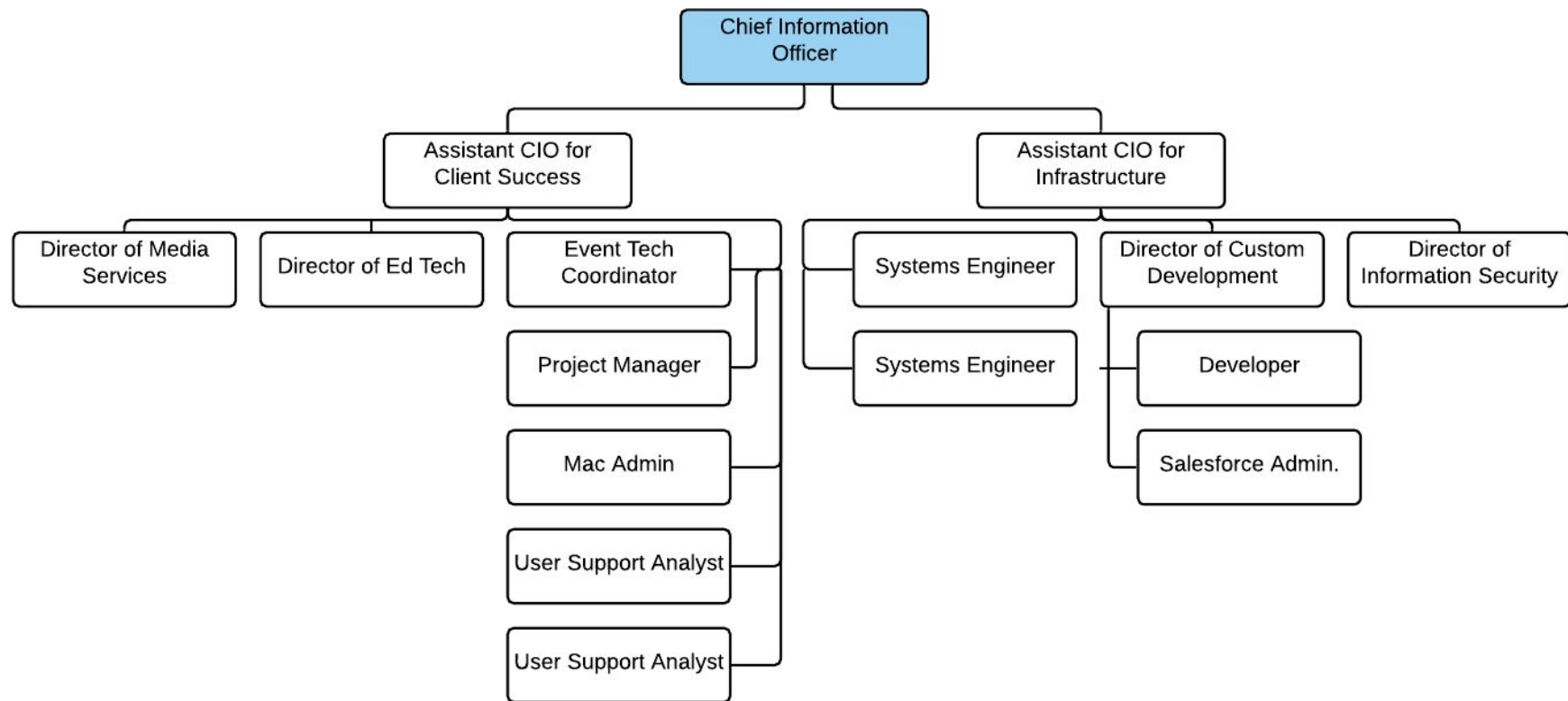
## President's Office



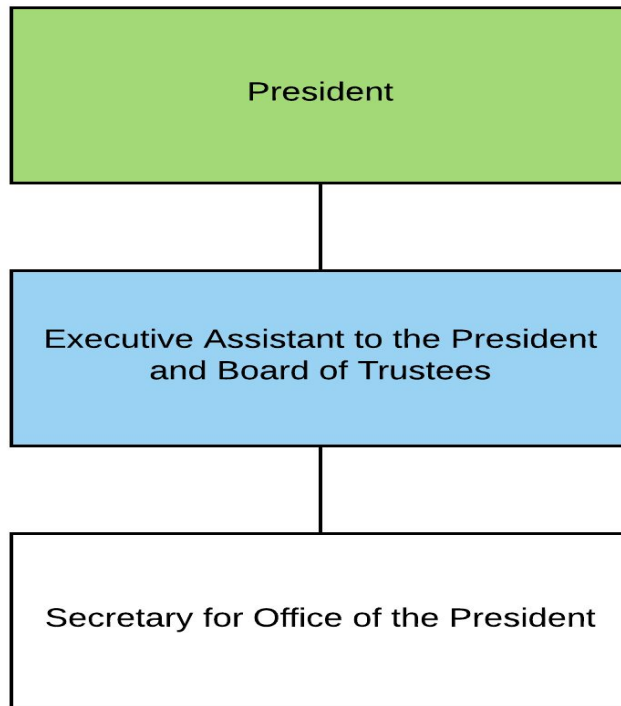
## Human Resources



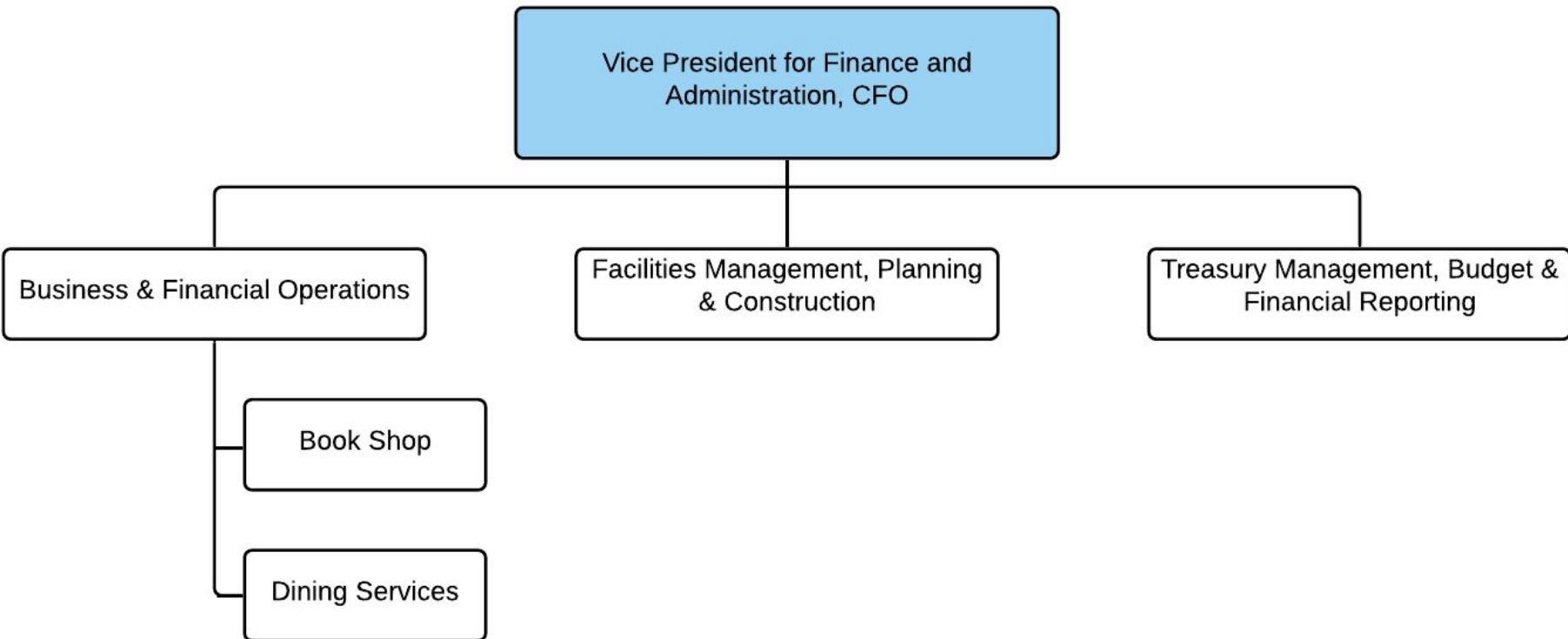
# Information Technology



## Office of the President

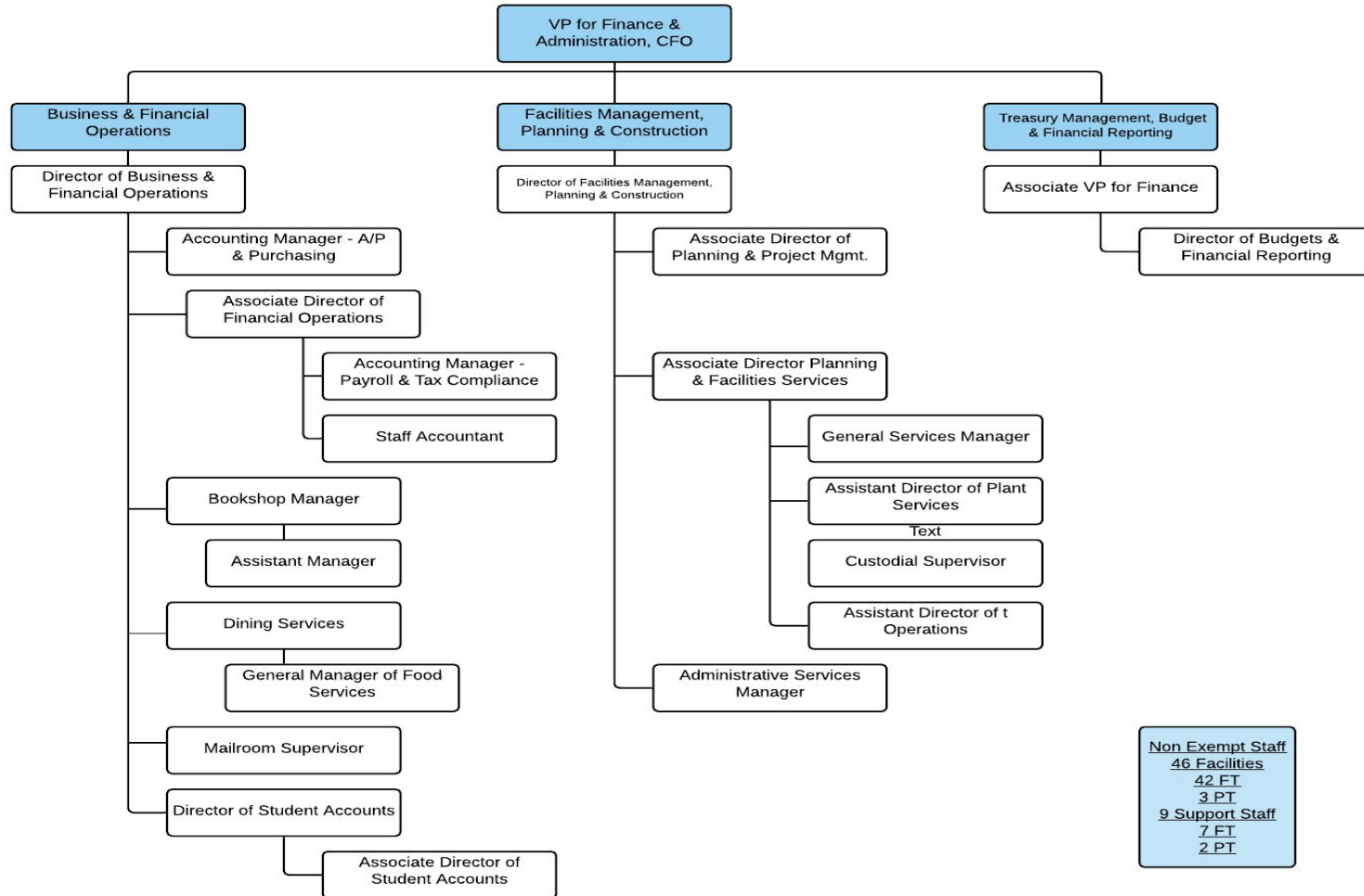


## VP for Finance and Administration, CFO



# VP for Finance & Administration, CFO

## Expanded

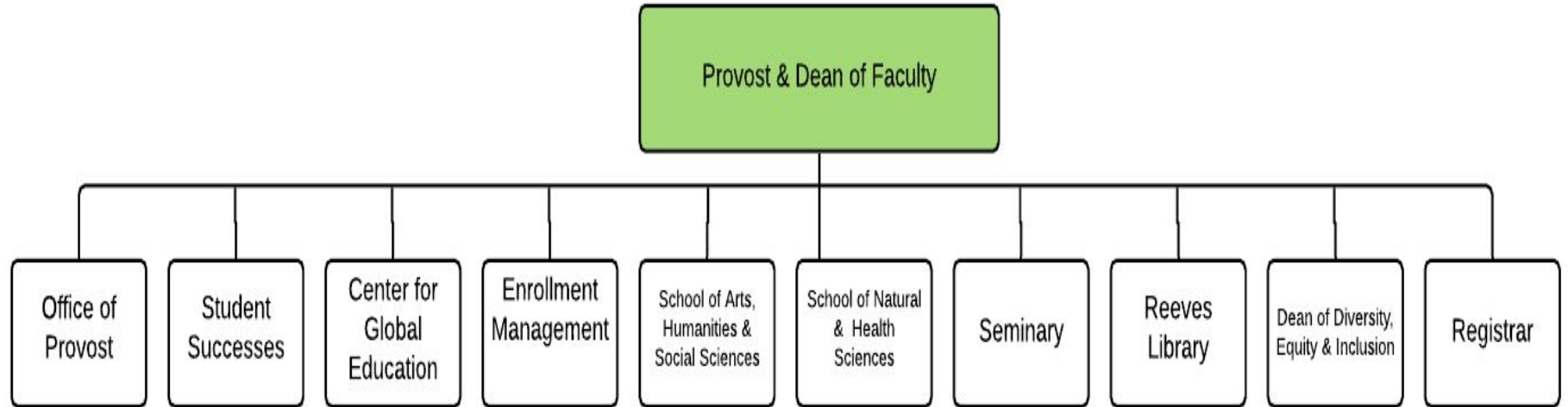


**Non Exempt Staff**  
46 Facilities  
 42 FT  
 3 PT  
9 Support Staff  
 7 FT  
 2 PT



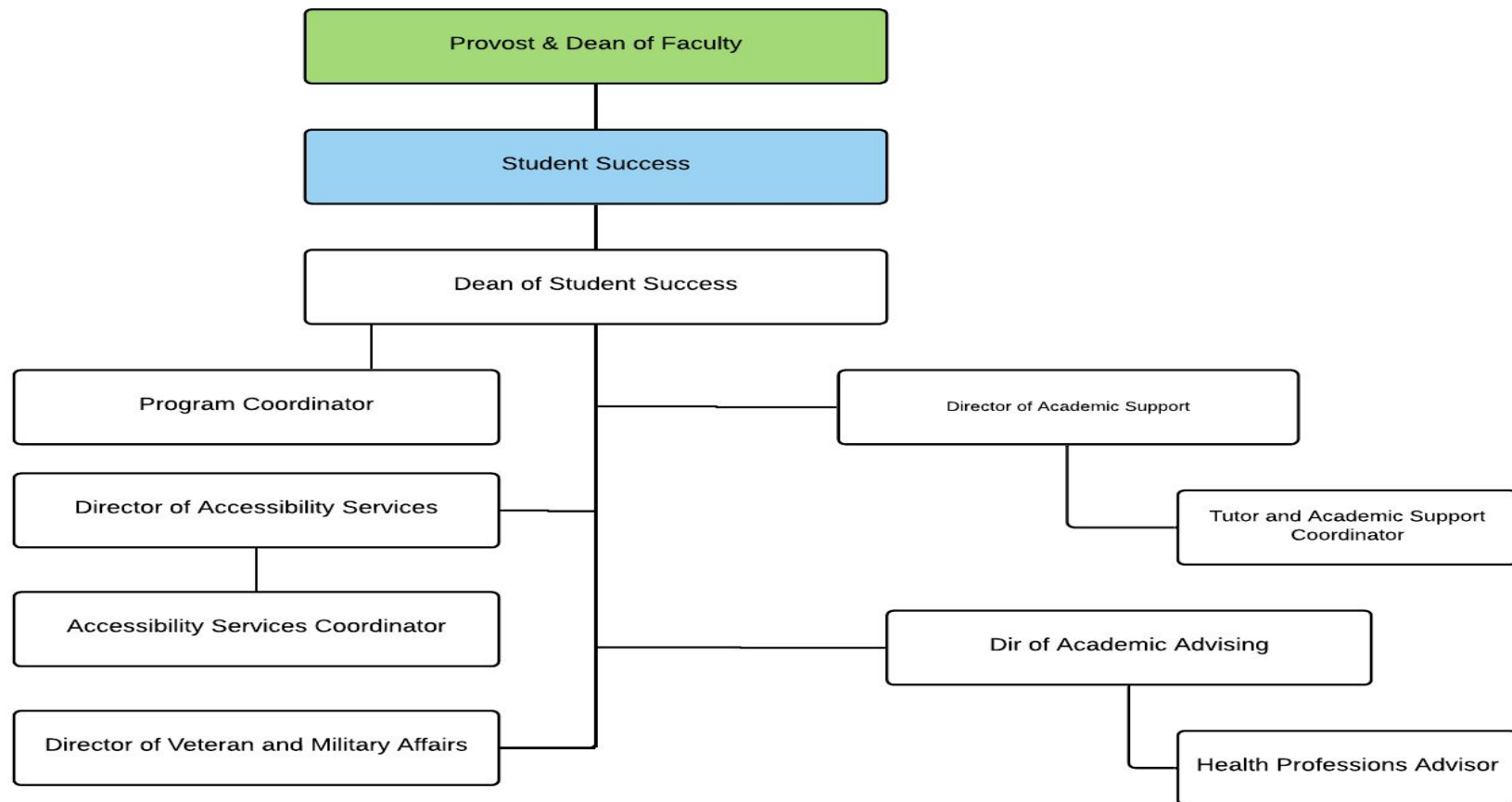
## Provost and Dean of Faculty

---



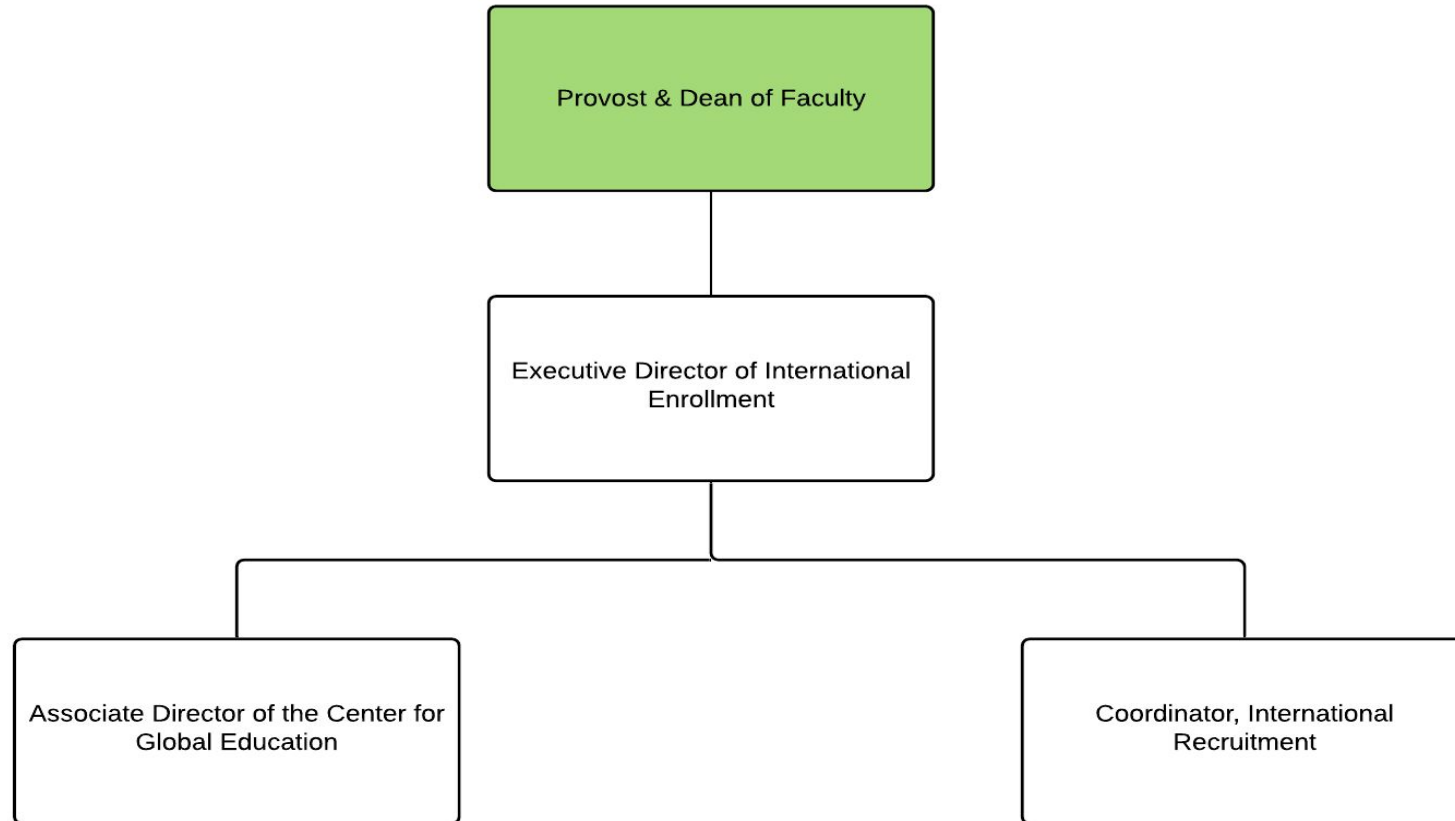
## Student Success

---

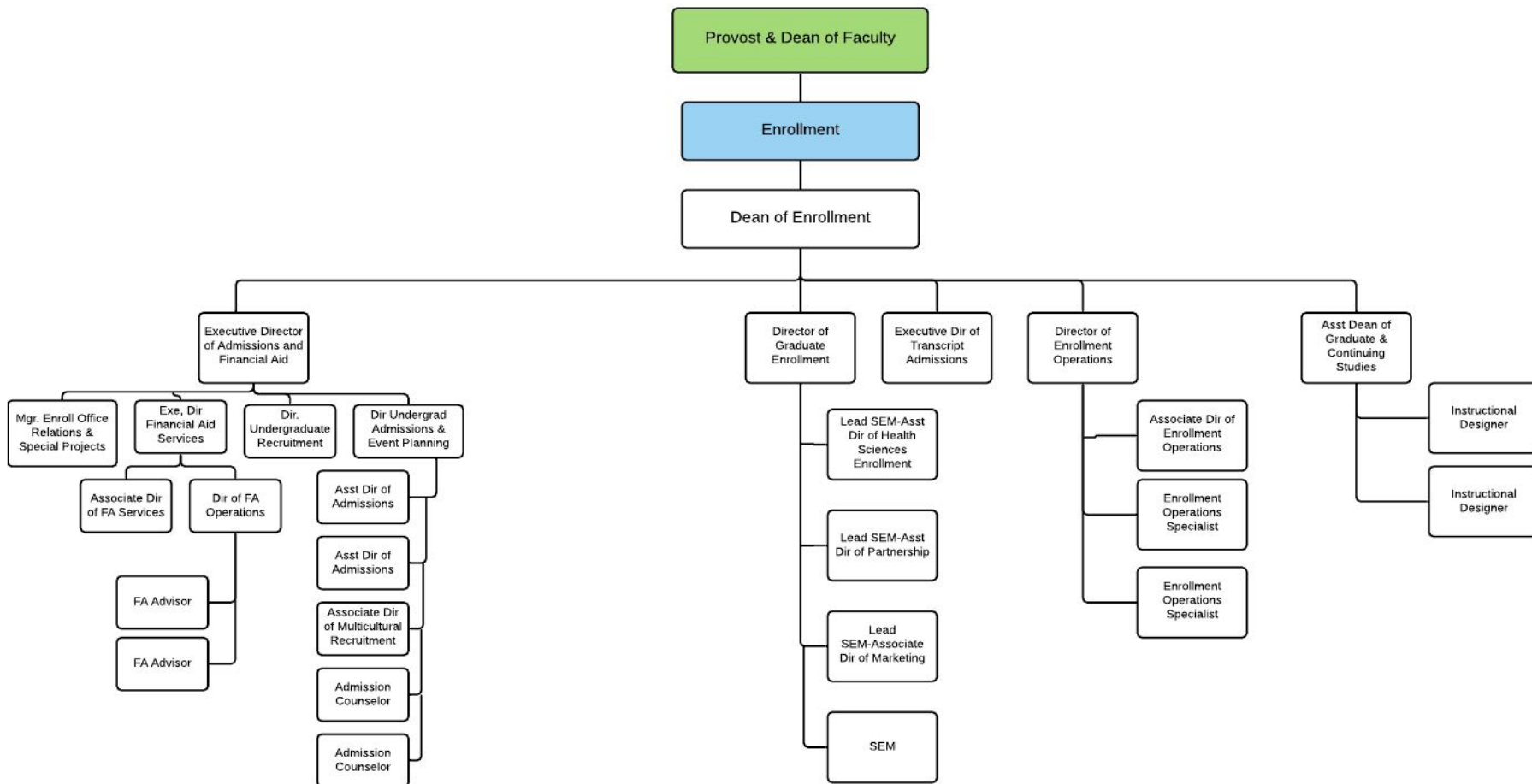


## Center for Global Education

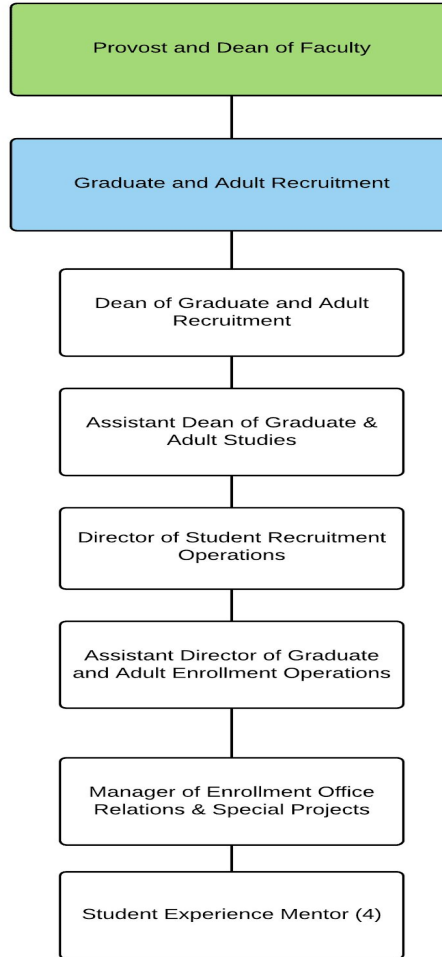
---



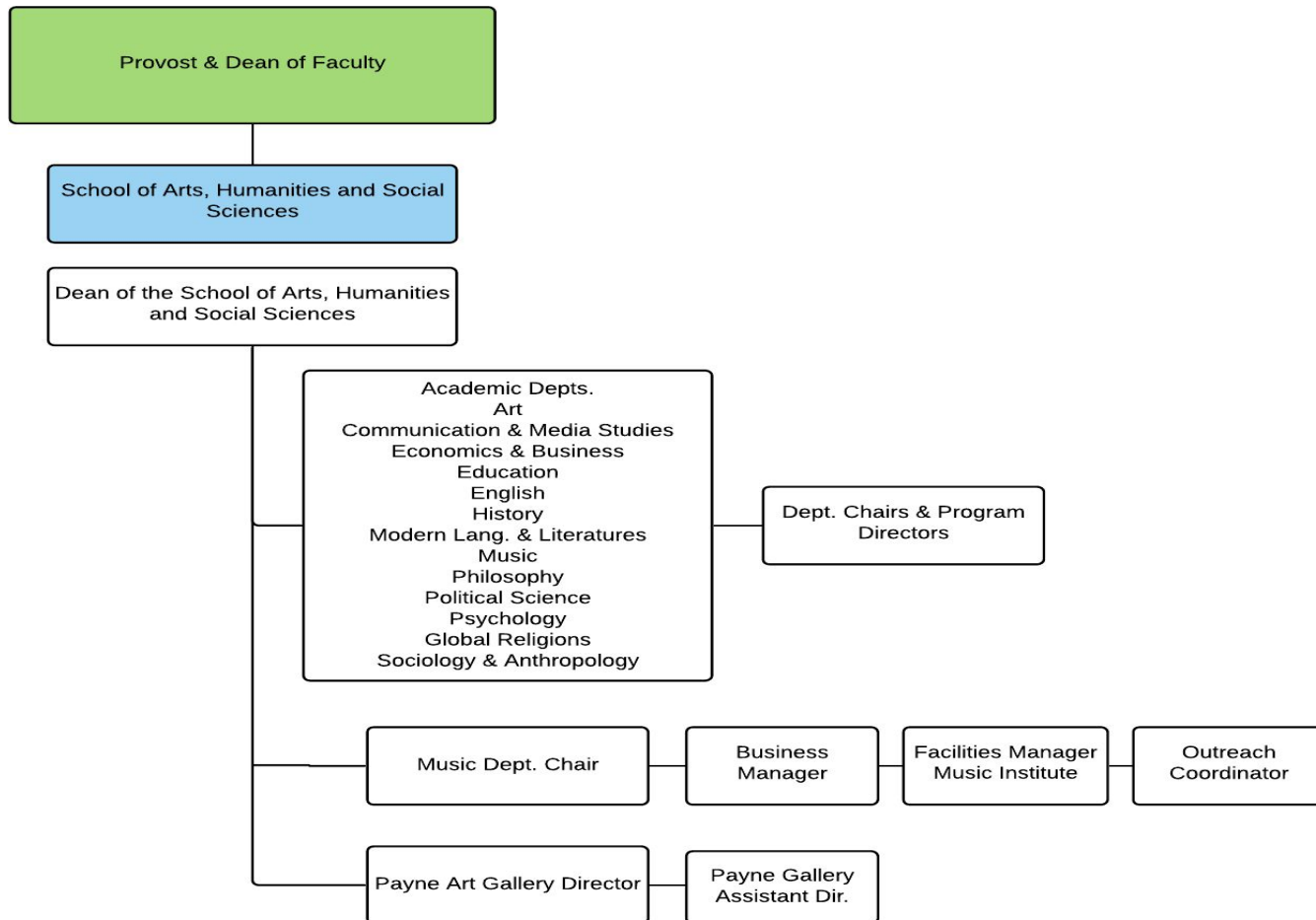
## Admissions & Financial Aid



## Graduate and Adult Recruitment

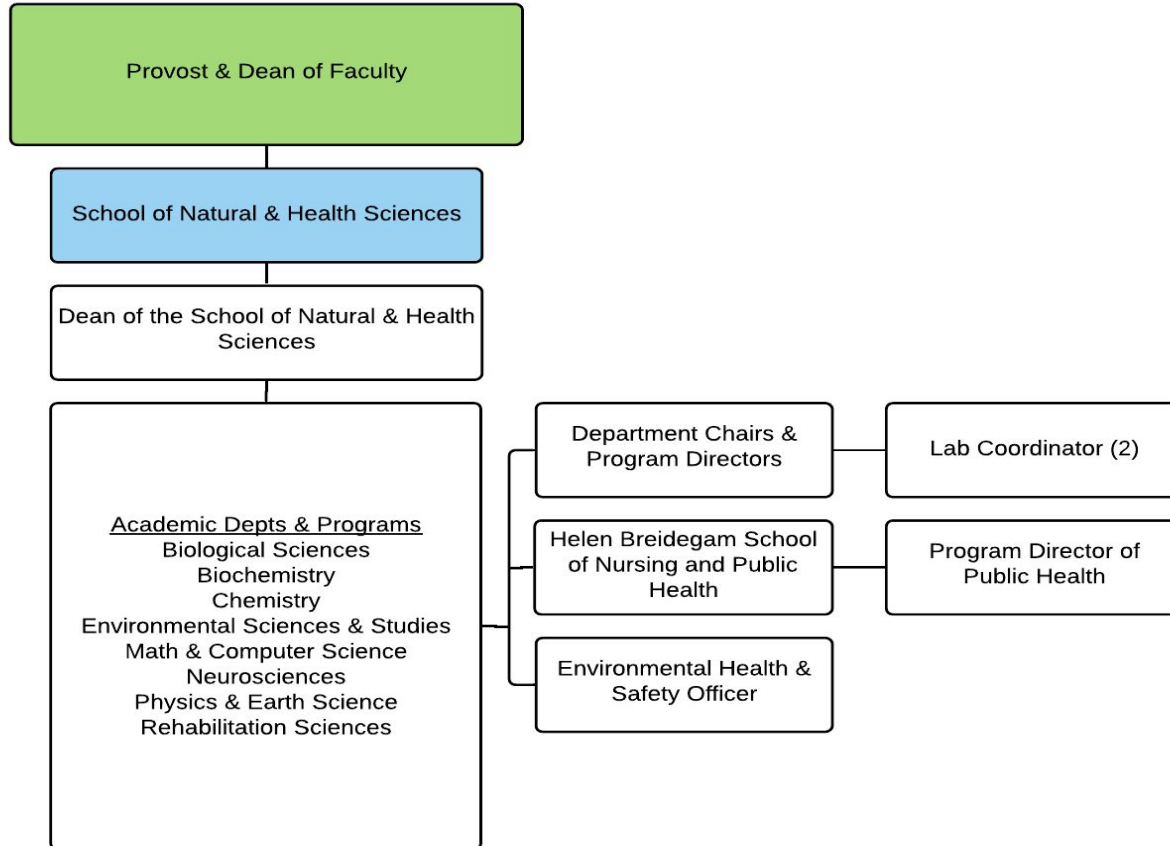


## School of Arts , Humanities And Social Sciences

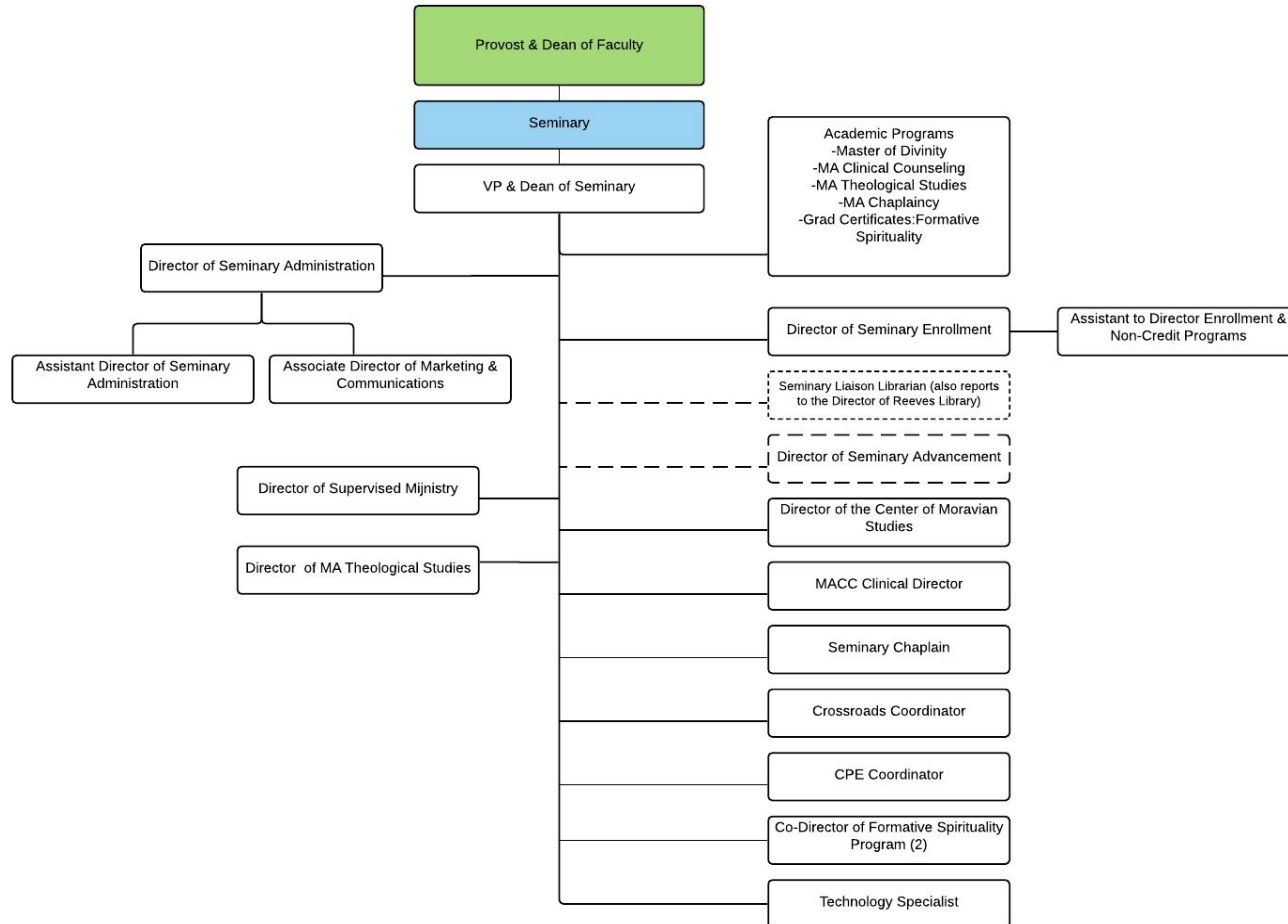


## School of Natural & Health Sciences

---



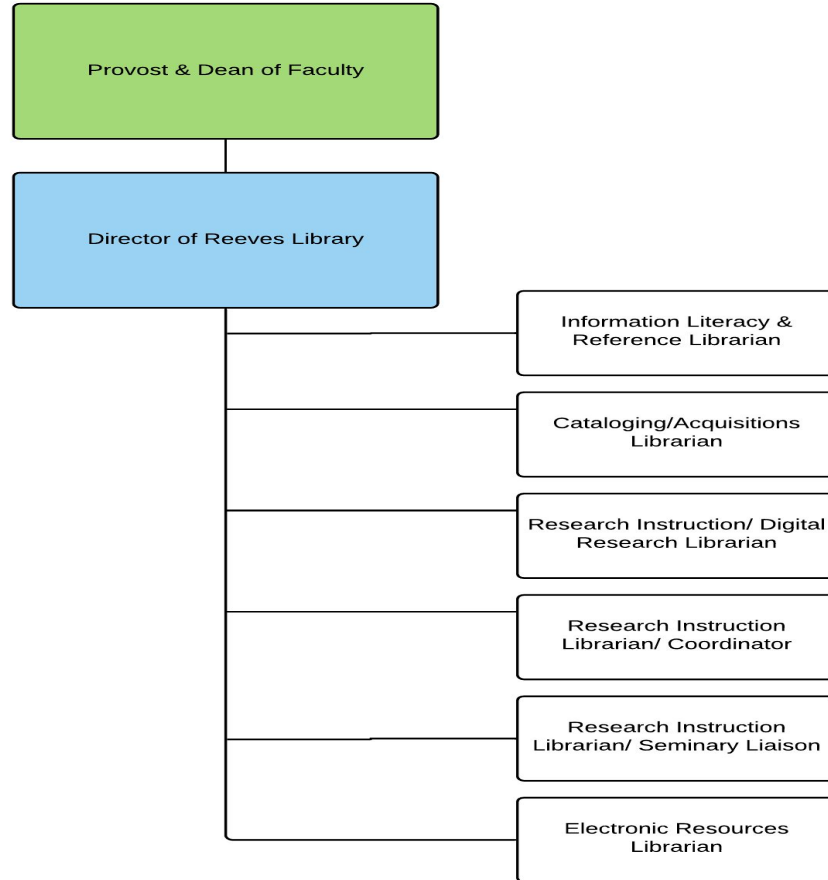
## Seminary



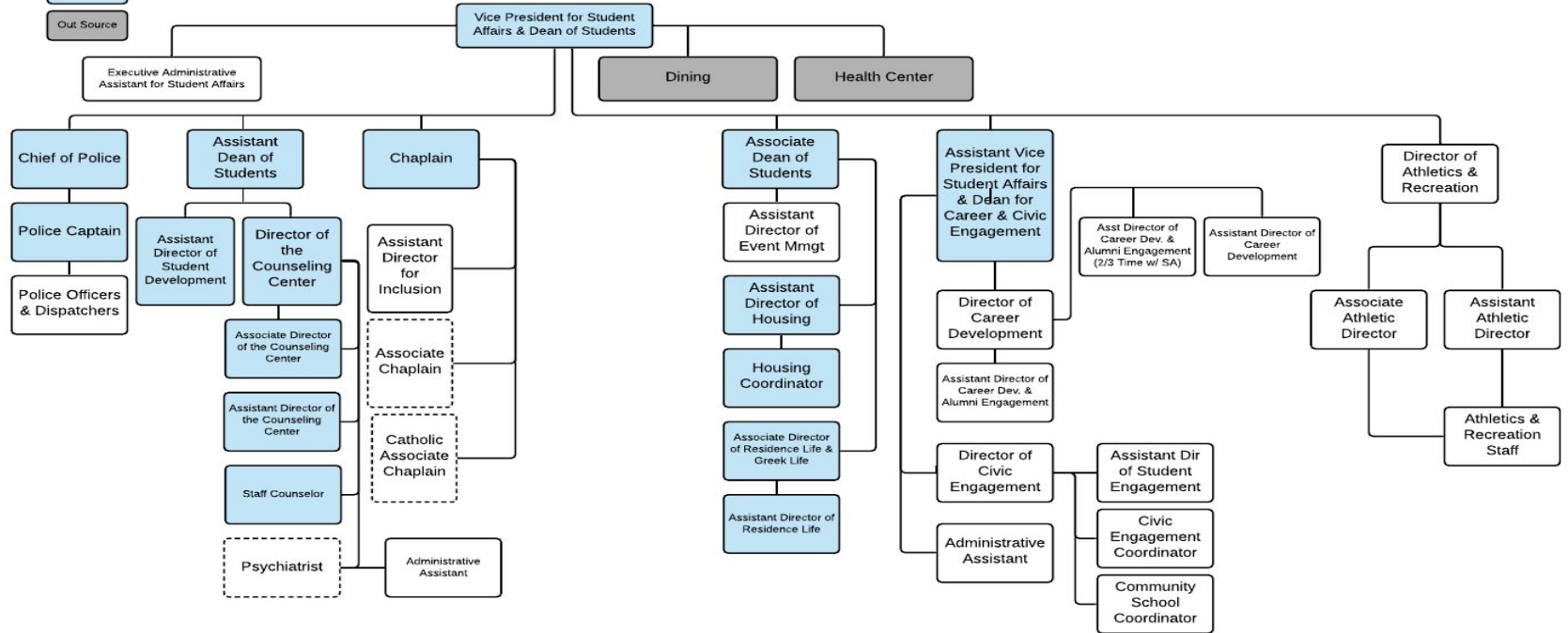


## Reeves Library

---



# Student Affairs Office



Athletic: 25 FT  
81 PT/Interns/VO  
Support Staff 2 FT

Campus Police:  
14 FT (PO)  
1 PT (PO)

Dining Services: 6 Mgr. 80 FT,  
37 PT, 6 On-Call

Health Center: 2 FT, 1 PT